

Dinulink KNX Laüka

In Basque. *Lauki*. Sp. *Cuadrado,-da*

1. Flat shape: Closed by four straight lines forming four straight corners.
2. Simple and exact.

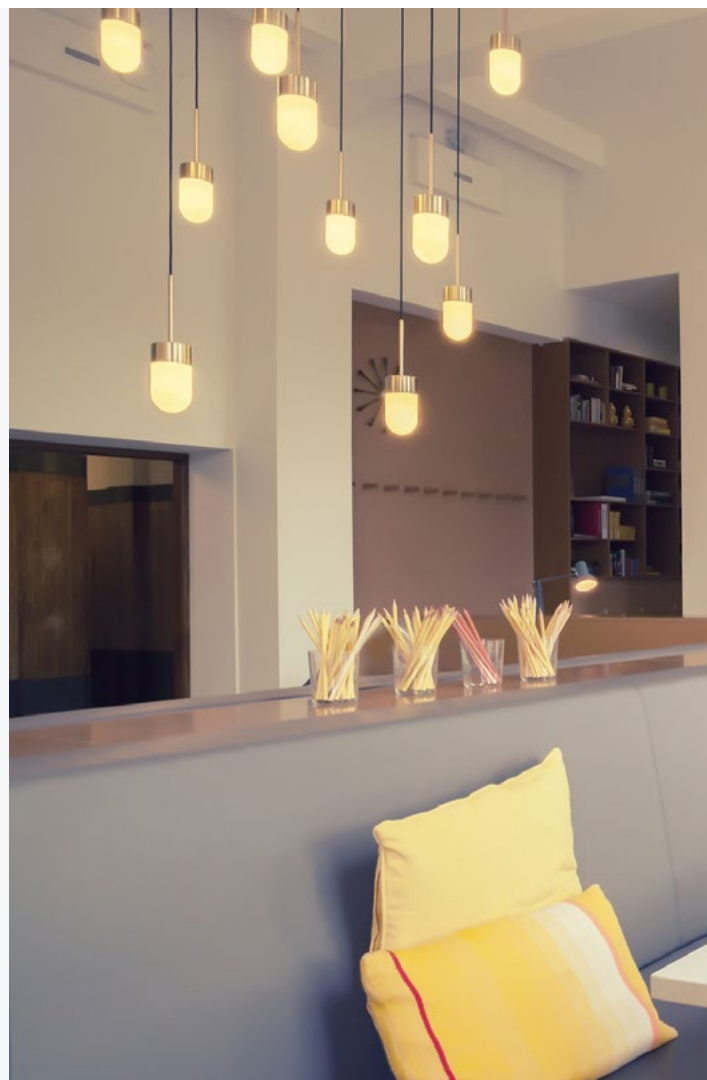


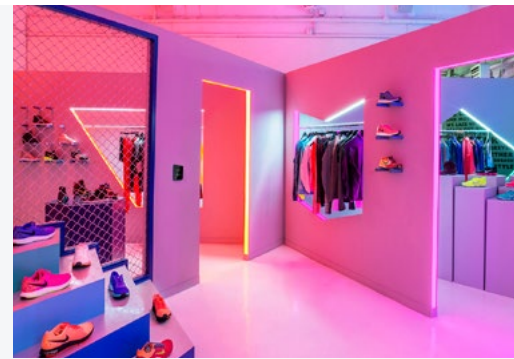
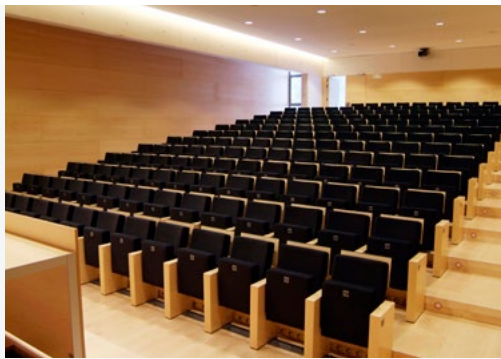
DINUY



Control

The Laūka series is a range of KNX multifunctional capacitive buttons. A switch designed to provide full control to the user over the lighting, the blinds and, in turn, the ability to memorize scenes to generate desired atmospheres at any time.





Versatility

The button is created to meet the diverse needs of both professional and private types of installations.

Home, Commerce, Restaurants, Offices, Hotels, Lobbies, Auditoriums...



Backlit

Custom light color



Materials

Copper

Chrome

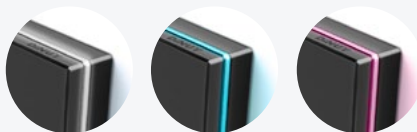
Brass

Wood



Backlit

Custom light color



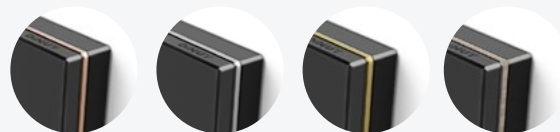
Materials

Copper

Chrome

Brass

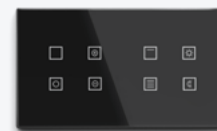
Wood



Integration

For the perfect integration in all types of interiors, the Laūka range consists of different types of finishes in lights and materials.

Laūka 8 button model

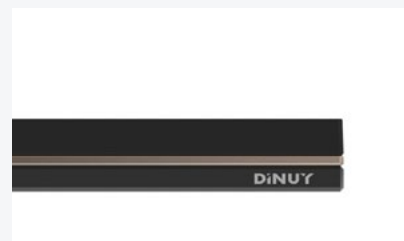




1



2

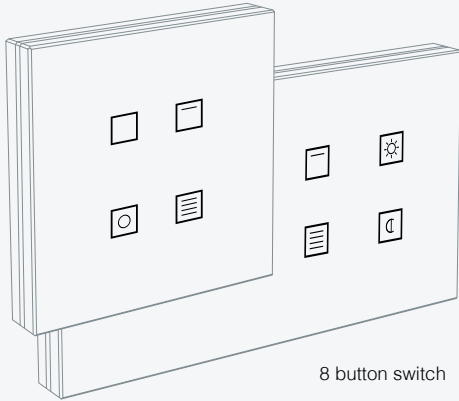


Quality

The visible quality of the product originates from good workmanship of its materials. Consisting of the use of three materials creating a resistant and long-lasting unit. The LED indicators of the tactile buttons assure perfect functionality bit by day and by night.

- 1 Composition
- 2 Unit
- 3 Night backlit
- 4 Width

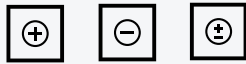
4 button switch



Light



On Off On/Off



↑ ↓ ↑ ↓

Blind

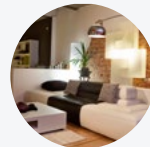
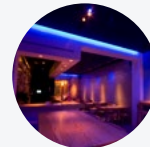
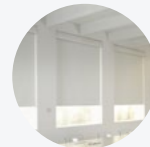
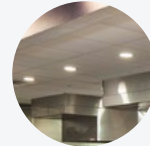


↑ ↓ ↑ ↓

Scenarios

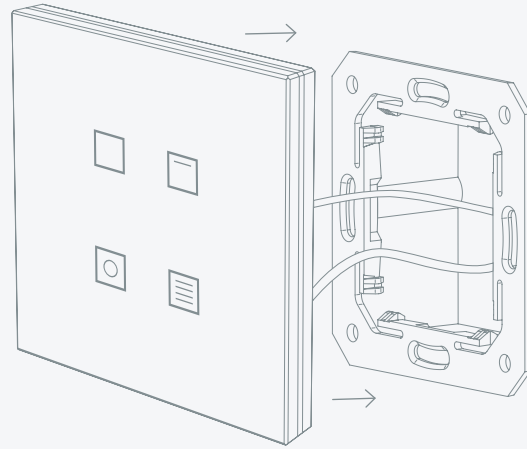
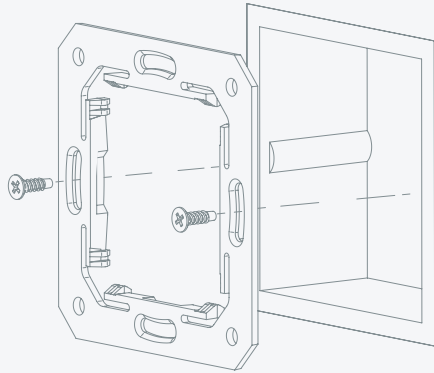


Day Night



Functionality

The switch is formed by 4/8 tactile buttons where direct functions can be assigned to control lighting, move the blinds or memorize moments creating personalized scenes. It incorporates temperature sensors and a configurable Thermostat function that can be adjusted from the ETS.



Speed

The switch can be easily and rapidly installed and prepared for use. Only two cables are needed from the KNX bus.

- Glass tactile surface
- 4/8 pressing areas
- Luminous control icons (LEDs)
- The LEDs illuminating the icons can be programmed
- Coupling unit to the KNX bus incorporated
- Incorporated temperature sensor

Experience and energy awareness

In our commitment to new technologies we have developed, over the last years, a large range of KNX products, the worldwide open STANDARD for home and building control.

Our commitment with the environment has moved us to develop a large variety of intelligent installation products focussed on energy saving, to obtain maximum advantage from the natural conditions in all types of installation and reduce electricity energy consumption.

