

Product: **SMI Shutter Actuator JA/S**

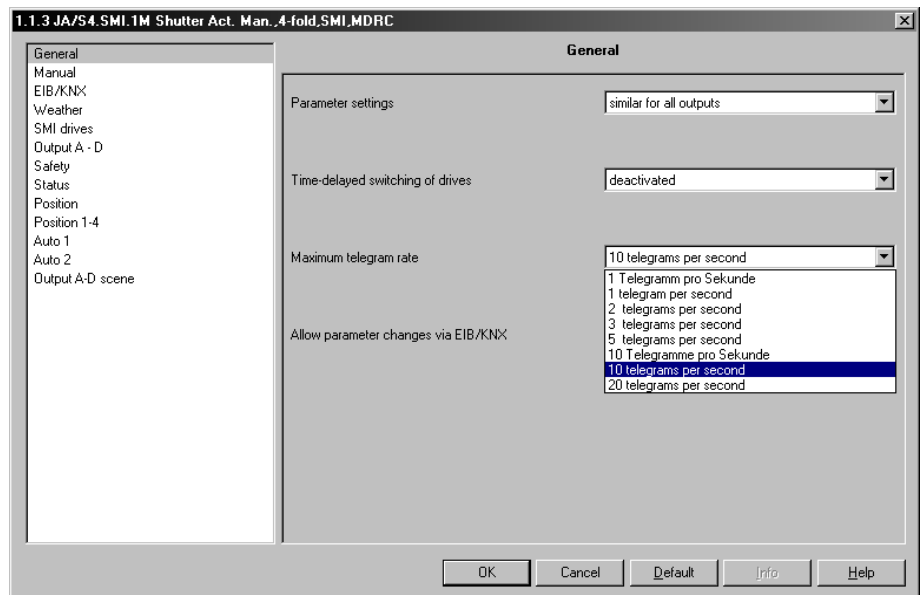
Type: **JA/S 4.SMI.1M**

Current application program: **Shutter SMI, 4f M/1.2**

General Information	to: Shutter SMI, 4f M/1.2 from: 01/2011
Error description	Sporadic telegram disturbances causing an unintentional move of the bind/lamellas after receiving a 'move lamella' command. This behaviour was adjusted (no changing on ETS parameter or objects).

General Information to: Shutter SMI, 4f M/1.1
from: 06/2008

Parameter "Maximum telegram rate" There were two similar Parameter options:
10 telegrams per second



This failure was adjusted.

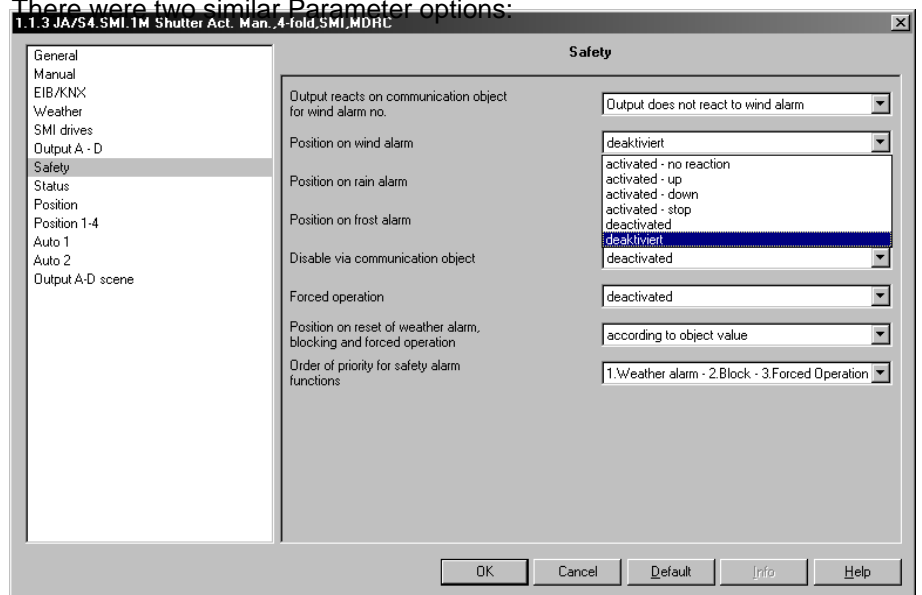
Parameter

“Position on wind alarm”

“Position on rain alarm”

“Position on frost alarm”

There were two similar Parameter options (one in German): *deaktiviert*
There were two similar Parameter options:



This failure was adjusted.