

**eibPort**

## INSTALLATION GUIDE and USER MANUAL

Version 2



Type LAN („L“)  
Type LAN/ISDN („L/I“)

b.a.b-technologie gmbh  
Heinrich-Hertz-Straße 4

59423 Unna



Tel. 0 23 03 25 30 1-0  
Fax. 0 23 03 25 30 1-490  
E-Mail. [info@bab-tec.de](mailto:info@bab-tec.de)  
Internet: [www.bab-tec.de](http://www.bab-tec.de)

## Content

Applications	4
Startpage eibPort	5
Visualization	6
Editor	7
Visualization editor	9
Visualisation elements	10
Tips visualisation	20
User administration visualization	21
Job editor	23
Tips job editor	23
Logic	24
Timer	25
SMS element	26
Delay unit	26
staircase light function	27
light scene	27
Receive / Send time and date	27
Threshold switch	28
Hysteresis switch	29
E-mail	31
UDP- sender	33
xPL- sender	34
Slimserver receiver	36
xPL Remote.Basic receiver	37
IRTrans receiver	40
UDP receiver	43
Comparator	44
WAP editor	46
Wake On LAN	47
Home Information Center Editor	48
System	52
ConfigTool	53
Configuration	53
File transfer	55
Backup and Restore	55

## Your notes

- EIB physical address:
- IP-Address:
- MSN-Number:
- Password:

eibPort control	56
User administration Configuration tool	57
Database connection	59
Startpage	63
licence upload	63
Installation and Setup	65
Connections	65
Important Considerations	66
Initial configuration	67
Objectstructure	70
iETS	71
EIB Interworking Standards	71
Cameras and internet	72
IP-Addresses in the internet	75
Updates for eibPort	76
Change language	77
Applications	80
eibPort - IRTrans	80
Music - Control	81
Appendix 1: Status LED	83
Appendix 2 : SMS Control Codes	85
Appendix 3: Technical Specifications	86
Appendix 4: WAP Configuration	87
Appendix 5: Network and Browser Settings	88
Appendix 6: Camera	91
Appendix 7: Passwords	92
Appendix 8: Certificate	93
Appendix 9: xPL- conditions	94
Appendix 10: eMail provider	96
Appendix 11: URL parameter	99
Appendix 12: Enhanced timer options	100
Appendix 13: EIS 15 Multiplexer	101
Your Notes	102

Copyright 09/2007  
b.a.b-technologie-gmbh  
Technical changes reserved

## Applications

Welcome to eibPort. To use eibPort, you do not require any special software. The software will be automatically installed when you connect to eibPort. The only requirement is that you use a standard internet browser with activated JAVA-support. You can select among the following functions to use in your eibPort application.

### Internal Services

- Visualisation
- Timers
- Links to TCP/IP-based Cameras
- Logic
- Communication via SMS and WAP
- iETS Server
- Data collection
- Light scenes

### Applications:

#### Automation functions

- Timers
- Logic elements
- Light scenes

#### Remote Monitoring

- Visualisation
- Communication
- Data collection (Reading and analysis with the software Data Warehouse)
- Web/Network camera

#### Remote Control

- Visualisation

#### Maintenance

- Communication
- Data logging
- iETS-Server

## Appendix 13 EIS 15 Multiplexer

This job can send EIS 15 texts started by EIS 14 values

### Input Group Address

Group Address starting this job. Format: EIS 14

### Activate

Activate / deactivate the output

### Wildcard

When this point is selected, the EIS 15 value will be send on every input value

### Trigger

Trigger value on which the text will be send

### Overwrite

When this point is selected, it is possible to overwrite the text from the output group address

### Text

EIS 15 text to be sent on this trigger value

### EIS 15 output

Group address the text will be send to

## Appendix 12 Enhanced timer options

The Jobs „week timer“ and „year timer“ send an „on-“ or „off-telegram“ at a defined point in time.

### Detect leaps in time

If this point is skipped (new time from NTP-Server for example), they won't send the telegram.

To make them send a telegram in this case, activate „Detect leaps in time“ in the eibPort Job Editor.

### Overwrite

Active: Timer works as a master; other telegram-values will be ignored.

Inactive: Other telegram-values can overwrite the values sent by the timer

### Initiate

Active: After a restart of the eibPort, the timer will send the actual telegram-value

Inactive: The timer only sends a telegram, when switching-time has arrived

## Integrated Software

eibPort contains an embedded Web Server which serves a number of JAVA applets.

Services can be programmed and configured by using a browser and can be saved in eibPort. The following browsers have been tested with eibPort:

- Internet Explorer Version 5.x or higher
- Netscape Version 4.77 or higher
- Konqueror KDE 3.0 or higher
- Mozilla Firefox

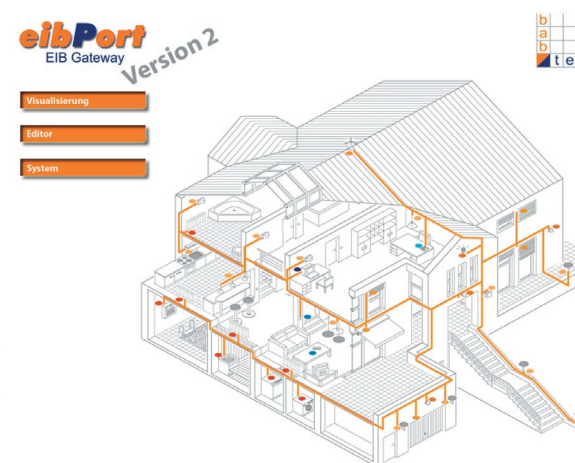
The eibPort Java-Applets require that Java Version **1.5** or higher to be properly installed and activated in the browser.

Enter the following URL into the address field of your browser. (you must have properly installed eibPort to proceed – please see the Installation Section).

<http://192.168.1.1>

(default address) or the address which you assigned during the installation of eibPort.

The following menu will appear:



## Note:

Applies to this device as well as general for EIB equipment: There are special requirements, suitable additional measures must be taken to reduce risks for persons or things (functional safety). These measures must have the necessary independence of the operation of the eibPort and always be available.

## Passwords

The access to the Editor- and System- button are protected by username and password. The username and passwords can be changed in the system editor. The default passwords are the following:

**username: admin**

**password: eibPort**

To change a password, the new password has to be entered twice in the user administration of the system editor. If you fill in nothing, no password is required.

Access to the pages of the visualization can be done under the user administration in the visualization editor.

## Visualisation

Here you switch to the pages of the visualization surface. If you have created several projects (e.g. for pc and pda) a menu for choosing a project will appear. If the user administration is active you will possibly be asked for username and password. In the left window area the titles of the created pages are indicated. By clicking the arrow icon you can show/hide this view. By clicking the elements on the visualization surface telegrams are sent from eibPort to the EIB. Java assures that changes of the states in the EIB facility will be indicated immediately by updating the corresponding element.

## Appendix 11 URL parameter

In the URL of the eibPort visualisation / start page you can submit parameters for the login (eibPort version > 0.6.9)

You can reach the eibPort visualisation directly with the following URL:

**<eibPort>/bmxJava2/visuPlain.php**

For the start page you have to use the URL:

**<eibPort>bmxJava2/default.php**

You can configure the start page options at the ConfigTool, see chapter ConfigTool >start page.

*For eibPort with a version < 0.6.9 you have to use the URLs*  
**visualisation**     **<eibPort>/bmxJava2/visuPlain.html**  
**start page**        **<eibPort>bmxJava2/default.html**

*But you can submit parameters in this versions.*

login parameter

You have to use the following syntax for the parameters. Watch out the „?“ and „&“ at the URL.

Example:

IP address / name of the eibPort     = 192.168.2.1

username                                 = xxx

password                                 = yyy

autologin                                = true / false

The parameter autologin is optional. If autologin = true, the visualisation will start directly. If autologin = false, the login dialog popup with the already filled in user and password. The login with another user is any longer possible. the default value is true.

**192.168.2.1/bmxJava2/visuPlain?username=xxx&password=yyy&autologin=true**

## Password

Type the password (of the mail account) in here and repeat it.

## "Realm"

You type in here which "Realm" shall be used for the authentication. This entry is not for the e-mail dispatch required at every provider or outgoing mail server. Ask your provider or administrator of the outgoing mail server.

## "From:" real name

is no name given at the configuration of the e-mail job, this is used.

## "From:" address

is no address given at the configuration of the e-mail job, this is used.

## Organization and signature

This information is optional and is inserted in the e-mail.

## Hint:

*For test purposes of the installation on the side of the network you can send test e-mails about the providers already laid out.*

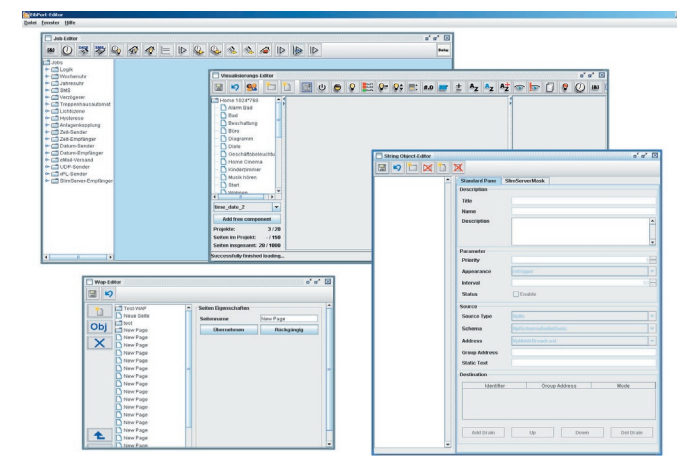
*If you are not sure about the settings of the email provider, you can test them with a email program. Create an account with the same settings for the outgoing mail server.*

*You have to enter the IP address of the DNS server of your Internet provider at the network settings in the ConfigTool.*

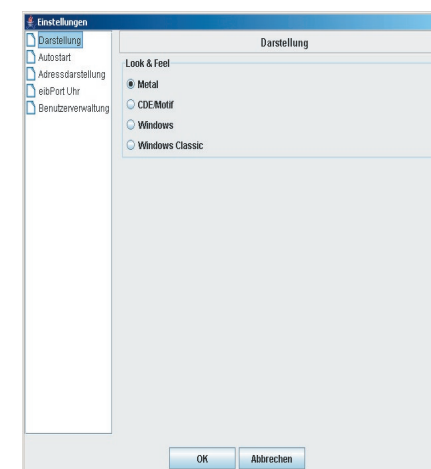
# Editor

You reach the editors for the functions of the eibPort here.

The access to the visualization sides is allocated under the user administration in visualization editor.



Over the menu file one can do the editor end against close or change the attitudes under attitudes regarding the editor.



The attitudes cover representation, autostart, address representation, eibPort clock and activate the user administration.

You can change between the editors under the menu item window. The following editors are at your disposal.

In the **visualization editor** the project is made or changed. A menu bar is available with different visualization elements.

The **Job editor** provides the following services:

- Logic elements, on-off delays
- Week timer, year timer
- SMS, e-mail
- Light scenes
- Staircase lighting control
- Hysteresis and threshold switch
- facility coupling
- date and time elements
- IP-Telegrams

In the **WAP editor** you create the pages that will be displayed when the user accesses the WAP with a mobile telephone. Additionally, the resulting EIB commands are also specified. The supported WAP standard is 2.1.

### Entry

The attitudes are stored under this entry. You have to choose this entry at the configuration of the e-mail job, if you want to use this provider.

### Provider name

Under this name the provider is displayed and managed in the ConfigTool. See selection box.



### Enabled

Single providers can be activated or deactivated over this entry.

### Default entry

Using the current provider as a standard.

### Mailhost/relay

The name / IP of the SMTP server (outgoing mail server) is einzutragen. e.g. mail.gmx.de

### SMTP Port

The port which the SMTP server uses has to be typed in here.

### Use authentication

Depending on SMTP server settings an authentication is required. This is the case the entry must be activated.

### Use TLS

The entry has to be activated if the connection to the SMTP server shall be encoded.

### Require TLS

The entry has to be activated if the SMTP server requires an encoded connection. This is also dependent on the provider and the server adjustments.

### User name

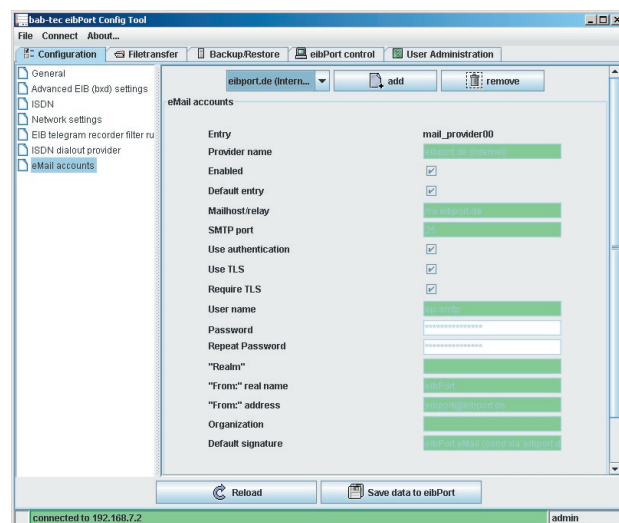
The eibPort logs into the SMTP server (outgoing mail server) with this name (name of the mail account).

## Appendix 10 eMail provider

If you want to use the eMail job, you have to add an email provider at the ConfigTool.

For this you have to connect your eibPort and start the ConfigTool. Click on the tap Configuration and choice email accounts.

You will see the following mask.



Here can you add and administrate the provier for the email.

Click on the button

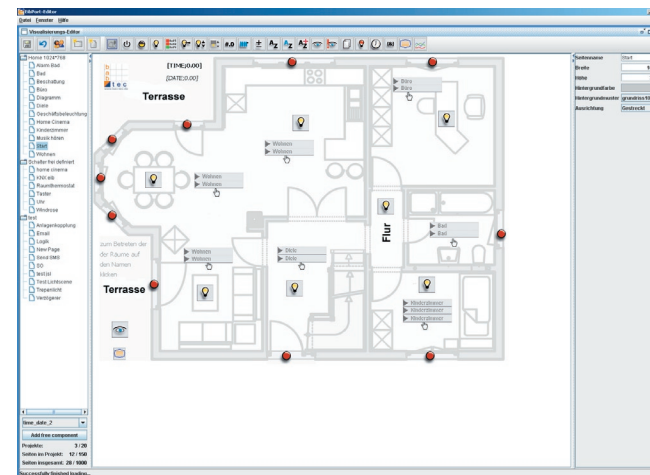


to add a new provider

*Hint: The settings are dependent of your email provider / email server.*

## visualisation editor

In the visualization editor the sides of the visualization are made and changed.



By selecting the menu icons, the element is put in the upper left corner of a side and can be placed freely. In the right window you can enter the parameters of the elements. The following table lists all available visualization elements.

Furthermore own elements can be made fast and easily with the ComponentBuilder. The ComponentBuilder offers possibilities with to design an individual visualization. These elements which are made and loaded into the eibPort can be inserted in the visualization about the choice in the left lower area.

The operation and making of panels with the ComponentBuilder are described exactly in the manual to the ComponentBuilder.

## projekt parameter

Several projects can be laid out in an eibPort to which the following project parameters can parameterise.

**name**

name of the projekt

**start page**

The select page is shown when the visualisation project starts.

**Show pageindex**

The page index is displayed on the window edge.

**Kioskmode**

The visualisation starts in fullscreen format.

**Show Disconnect**

A connection demolition is announced at the visualization

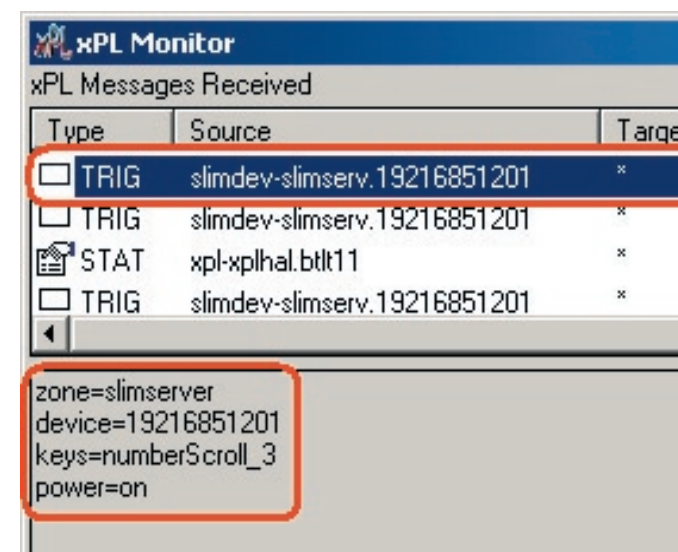
possible reasons:

- Breakdown of the supply voltage of eibPort, router or other network devises.
- physical breakup of the Connection (pulled network kabel)
- damage network devices

### Hint:

*You most simply reach with the monitor of the xPLHal manager to the xPL attitudes. You can see all xPL datagrams in the network and derive the individual parameters there. The following picture shows a part of the monitor. All necessary information is contained in the lower part of the window.*

*If a SQUEEZE Box doesn't have a name, the xPL-Hub use the IP address without points as instance.*



## Appendix 9: xPL conditions

For the job xPL- sender must be the service xPL-Hub installed on the MP3-server and the PCs with used as player.

### xPL- Hub

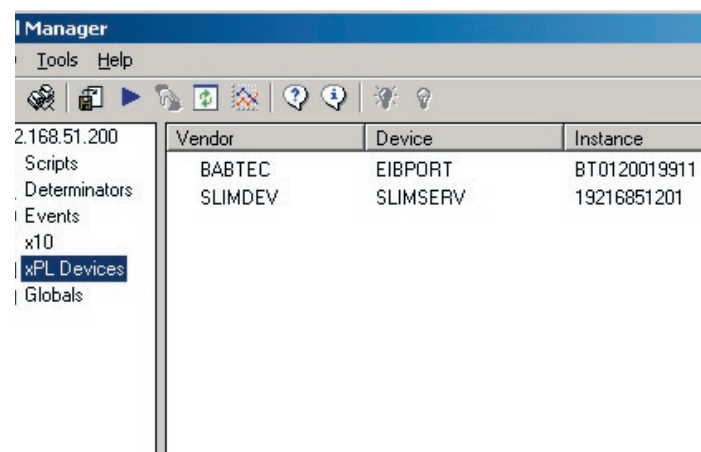
A hub is a mandatory part of any PC-based xPL installation, handling message traffic between xPL applications. Hubs are no longer built into any xPL applications, and therefore must be installed separately.

**The xPL- Hub use for the communication the port 3865. You have to activate the port if you using a firewall.**

### xPL-Hal-Manager

With the xPL-Hal-Manager you can see all xPL members in the network. In the xPLhal- Manager can you find the settings xPL-vendor, xPL-device and xPL-instance under xPL- devices. Additonal the xPL-Manager has a function to send xPL- datagrams with you can test the installation. The xPL-Manager is not necessary for the xPL- function, but it is helpful at the installation.

more information about installation and settings can you find on the internet under [www.xplhal.org](http://www.xplhal.org). There are links for download the xPL- software, too.



## page parameter

A projects can be consist of several pages which can be desgin freely.

Every page has the following parameter:

### name

name of the page

### width

Width of the page in pixel

### heigth

Height of the page in pixel

### backgroundcolor

Choice a color for the background

### background image

Uploaded pictures can be chose as background image. For the upload use the file transfer in the Configtool

### arrangement

define the arrangement of the background image

# Visualization

eibPort Component	Description	EIS Object
Switch	The switch can be assigned a group address for On/ Off switch telegrams.	1
Dimmer Slider	Values between 0 - 100% (0-255) will be sent by moving the slider.	6
Dimmer Switch	„Switching mode By pressing the switch the on/off command will be sent.	2
	„Dimmer mode‘ By pressing the switch the lighter or darker switch command will be sent..	2
Shutter	Raise/Lower	7
	Blade angle	7
	Mode: Wind alarm	1
Status light	Displays the status of the given light.	1
Camera	Pictures from a network camera can be displayed in a seperate browser window or within the visualization. See appendix 6: Camera.	-
Link to Job-Editor	Allows to link to timers and light scenes to make them adjustable within the visualization.	
RSS Feed	You can enter an URL from a News website. The latest news are shown in the visualization	

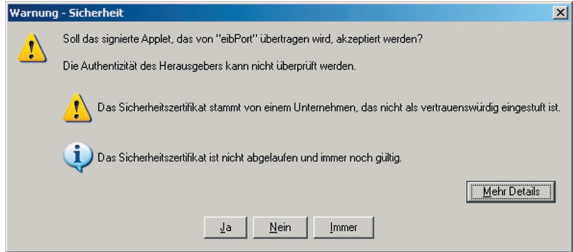
Visualization

12

# Appendix 8: Certificate

In order to run the visualization of eibPort a Java applet has to be transmitted from eibPort to the pc. This Java applet is signed by the company b.a.b.-technologie GmbH.

When you start the editor or the visualization after starting the browser for the first time this security alert will appear. Confirm it by clicking “yes” or “always” (then the alert will not appear again).



93















## Appendix 7: Passwords

### ISDN

ISDN-IP: 192.168.3.1  
User "eibport"  
Password "eibport+2"

### WAP

User "wap"  
Password "eibport+2"

Values	Menu Icon	Visualisation Element
1 Bit		
1 Byte		
1 Bit		
4 Bit		
1 Bit		
1 Bit		
1 Bit		
1 Bit		
		
		
		The text from the URL gets displayed.

eibPort Component	Description	EIS Object
Thermostat Value display	Displays the current and target temperature (EIS 5).	5
Temperature value Setting	The temperature setting can be changed.	5
Text, static	Static text used for creating labels on the application interface.	-
Text, dynamic	Displays different text depending on the object value.	1
Jumper	Allows the user to switch between visualisation pages.	-
Fault indication	If the preset group address is high (1), the page containing the alarm is brought to the foreground.	1
Push button	Sends by every mouse click either on (1) or off (0). „Nur ein“ (only on) - only sends on „Nur aus“ (only off) - only sends off.	1
Event Camera	If the preset group address is high (1), the current camera picture is brought to the foreground for 10 seconds. See appendix 6: Camera.	1
Background image	In eibPort loaded pictures can be positioned freely. The background picture can also be switched by a group address from EIS-typ 1	
Logic panel	Indicates the result of a logic operation parameterized in the Job editor	1
EIB Monitor	Opens a window that lists all sent and received telegrams	

## Appendix 6: Camera

With eibPort you can indicate the pictures on network cameras directly within the visualization or in a separate window. The function event camera automatically switches to the page with the camera picture respectively shows the camera picture in a separate window when released by the corresponding group address.

### Integrate a camera

Every network-ready camera can be integrated into a visualization. To indicate the camera picture in a separate window insert a new camera element and activate the option „As Icon“. In the input field „URL“ type in the complete network path to the camera with prefixed „HTTP://“ (e.g. HTTP://192.168.1.2).

Consideration:

### MJPEG

If you have a camera with „Motion-JPEG“ function, mark the option „Motion-JPEG“ and type in the network path of the mjpeg stream. Now you can watch the mjpg-video-stream from you camera.

To indicate the camera picture directly as picture in picture within the visualization page the option „As Icon“ must be inactive. In the input field „URL“ type in the complete network path to the picture buffer of the camera with prefixed „HTTP://“ (e.g. HTTP://192.168.1.2/record/current.jpg).

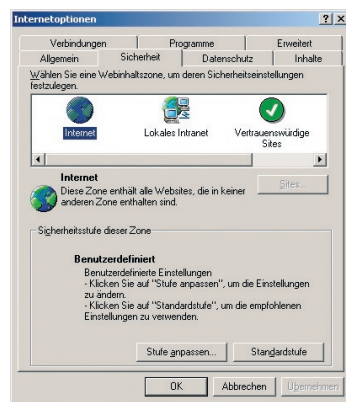
### Event camera

To indicate the camera picture automatically in a separate window at release by the corresponding group address activate the option „As Icon“. In the input field „URL“ type in the complete network path to the camera with prefixed „HTTP://“ (e.g. HTTP://192.168.1.2).

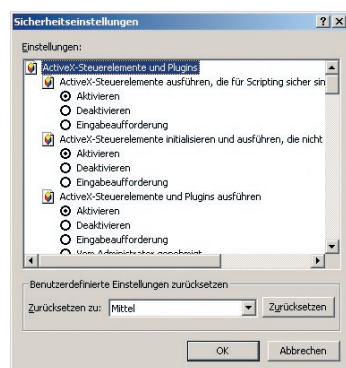
To indicate the camera picture within the visualization page at release by the corresponding group address the option „As Icon“ must be inactive. In the input field „URL“ type in the complete network path to the picture buffer of the camera with prefixed „HTTP://“ (e.g. HTTP://192.168.1.2/record/current.jpg).

## Quickstart Internet Explorer

- Internet Explorer 5.x or later
  - Java Version 1.18 or later installed and configured.
  - Javascript/Active Scripting activated.
1. Select the menu Tools / Internet Options in Internet Explorer.
  2. Select the Tab 'Security'



3. Click on the bottom button custom settings.
4. Activate the following options:  
'ActiveScripting' und 'Allow paste operations via script'  
as well as 'Scripting of Java Applets'



5. Press the „Ok“ button to accept your changes.

Values	Menu Icon	Visualisation Element
16 Bit		Ist-Temperatur 20,96°C Soll-Temperatur 21,96°C
16 Bit		
-		Depends upon the text which is entered within the visualisation editor.
1 Bit		Depends upon the object value of the group address which is entered within the visualisation editor. Color, font and font size can be set.
-		
1 Bit		
1 Bit		
1 Bit		
(1 Bit)		
1 Bit		Logik

<b>eibPort Component</b>	<b>Description</b>	<b>EIS Object</b>
Textdisplay	The text display shows received test messages. The text information can be sent to other text or EIB displays, too	15
Bit Panel	Indicates the status of the single bits of a telegram. Each bit can be shown/hidden. The colours for the states can be chosen. Each bit can be labeled. The single bits can be sent.  Application: Indication of the status of e.g. a heating device sending a status byte (EIS 14).	14
Diagram	The diagram shows the courses of values. One diagram can represent up to 3 curves, which can be formatted individually. See the following pages.	5 6 9 10 11 14
clock	display the time in form of an analog clock.	3
EIS 15 text	the element EIS 15 Text shows the text of a EIS 15 group address. The representation of the text is carried out transparently without frames, font, size and color can be chosen freely.	15
Value display	Display and change various EIS values Format: ##.## : Required digits are displayed Format: 00.00 : All digits are displayed	5 6 11

Assign an IP address like 192.168.1.25 to your PC's network card (Network Settings - TCP/IP Settings) The IP address must be the same as eibPort in the first three places and must be different in the last place (in our simple network) !

<b>eibPort</b>	192.168.1.1
PC	192.168.1.25 Subnet mask 255.255.255.0

For other network configurations, consult the handbook of your router or firewall and ask your system administrator. A connection between the browser and eibPort via port 80 and 1735 must be guaranteed!

If you use eibPort behind a firewall or router, the gateway address (generally the internal IP number of the gateway or firewall) must be set in the ETS! (see „Parametrierung der LAN-IP-Adresse\_2“)

Further information for network and browser configuration can be found under <http://support.bab-tec.biz/en>

## Appendix 5: Network and Browser Settings

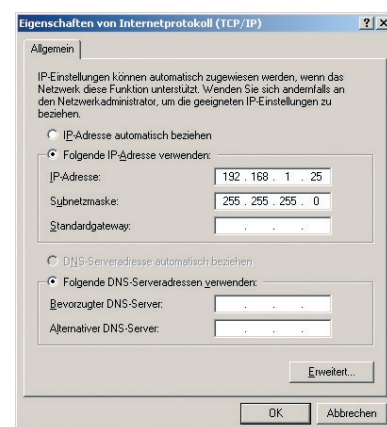
eibPort requires browsers with a properly installed and configured java virtual machine version 1.18 or later. We have tested the following:

- Internet Explorer ab Version 5
- Netscape ab Version 4.77
- Konquerer ab KDE 3.0

### Network Quick Installation

The connection between the PC and eibPort takes place via port 80 (HTTP) and port 1735 JAVA applet data communication. The access to these ports must be guaranteed, when you place a router or a firewall between the eibPort and the client browser.

If you have difficulties connecting to eibPort we strongly recommend using a **cross-over cable** directly between the PC and eibPort to check the connection.



The PC needs to be assigned an IP address in the same subnet of the eibPort. This means that only last number in the IP address of the PC and the eibPort must be different.

The subnet should be set to 255.255.255.0.

The standard IP address of the eibPort is 192.168.1.1.

Values	Menu Icon	Visualisation Element
14 byte Text		
16 bit		
1,2,4 byte		
3Byte		
14 byte text		EIS 15 Text
16 Bit 8 Bit 32 Bit		



## element diagram

The visualization element diagram represents the course of values over the time. Working examples are temperature course, meter readings, ...

### Settings

#### fixed y-axis

The y-axis can be provided with a fixed scaling. If this function is activated a maximum and minimum can be adjusted. At deactivated function the y-axis is scaled automatically.

In a diagram can be shown up to 3 curves. You can adjust every curve with the following parameters:

#### Curve type

Two curve types are distinguished, standard and differentiated.

Standard: The value of the object is represented over the time.

Differentiate: The difference of two values of an object succeeding one another is represented over the time.

#### Interval

This attitude concerns only the diagram type in detail. The interval is the time between the calculation of the difference. Example 5 minutes

#### Address

the course of this group address shall be represented.

#### EIS format

The representation of the following EIS formats is supported: EIS 5, 6, 9, 10, 11, 14.

#### Description

A description of the group address can be typed in here. At the use of a group address from the ESF file the description is taken on from this.

#### Factor and offset

The curves can be formatted free with factor and offset

## Appendix 4: WAP Configuration

**eibPort** can communicate with a WAP capable mobile telephone. Please consult the handbook or your telephone manufacturer about the details of your specific model, including bookmarks, entering an URL, reload, closing the connection and so forth.

The necessary settings for eibPort are.

#### WAP- Parameters

- IP address
- Port
- Start page
- Timeout/Inactivity

The IP- address is: 192.168.3.1

The port number is: 9201

The URL (Uniform Resource Locator) of the starting page is <http://127.0.0.1/index.wml>

The timeout specifies the time after which the connection will be terminated if no activity (no entry, no data exchange) takes place. This time is user specified.

Proposal: 180 (3 Minutes)

Further, you must set the following CSD information (Circuit Switch Data) when configuring the mobile phone:

- Number „xxxxxxx“
- Connection type „ISDN“
- User „wap“
- Password „eibport+2“  
(The password is unchangeable)

The number is the complete telephone number of the eibPort, including country code!

## Appendix 3: Technical Specifications

Operating voltage:	10- 30V
Consumption:	<= 5 VA
Power supply:	via EIB

### Important:

*The line with integrated choke cannot be used for the operating voltage!!*

In the event of power failure, **eibPort** contains a gold cap capacitor to retain the data buffer for up to 30 minutes. Dieser garantiert eine Pufferung der interne Uhr bei Betriebsspannungsausfall von 1/2 Stunden. Die Daten bleiben dauerhaft im Flash gespeichert.

Climate:	per EN 50090-2-2
Operating temperature:	0 - 35°C
Storage temperature:	-20 - +70°C
Rel. Humidity (not condensing):	5% - 80%

### Physical data

Dimensions:	Installation housing;(Width 8 TE á 18 mm)
Housing material:	Plastic
Weight:	approx. 0,4 kg
Installation:	DIN rail mounting device per EN 50022-35x7,5
Protection:	IP20 (per EN 60529)

### Other attributes:

Operating system	Embedded Linux
Processor:	586DX, AMD Elan
Interfaces	EIB, Ethernet, Euro-ISDN
Software	integrated Browser-Visualisation; integrated Installation Software; iETS-Server WAP-Gateway
Memory	16 Mbyte RAM
EIB-Datenpunkte	All EIB group addresses
EIB-Memory	History (20000 Telegrams)

### Curve colour

The curve colour can be chosen freely.

### Functionalities within the visualization

In the visualization, the element diagram offers further functions which you can call up with a right click on the diagram.

#### Refresh

Update the values of the diagram.

#### Save the graphic as

Opens the file browser to store the diagram as a graphics file (.png).

#### Show properties

Show the attitudes of the represented values.

#### Time

The diagram shows the values from a time, until a time, or in a time period.

#### Order

The diagram shows the latest or oldest values from the circular buffer of the eibPort.

## Tips for the visualisation editor

### Transparent switches

The switching elements can be displayed transparent. The elements behind the switch will be apparent. This way e.g. own pictures can be used for switches.

### Background / Background graphic

After you have created a new page, you can set a background colour or load a background image (see chapter Configuration Tool, File Transfer). Please consider that images consume a lot of eibPort's memory!

*Consideration: Quit the editor and restart it to make new loaded pictures available.*

### Width of page and resolution

The width of visualization page can be chosen freely and adjusted to the resolution of the visualization client. The standard resolution of screens is 1024 x 768 pixels or 800 x 600 pixels. The resolution of a pda is e.g. 240 x 320 pixel (see your devices manual).

### Names of projects and pages

The names of projects and pages can be chosen freely. Projects and pages are listed in the visualization editor in alphabetical order.

### Copy, paste, delete

Elements can be copied including the parameters. Right-click on an element in the visualization editor and choose copy/paste from the menu. You may also use the keyboard shortcuts ctrl-c (copy) and strg-v (paste).

You can also include a new element with a right-click on the visu page.

## Appendix 2 : SMS Control Codes

### Description of the eibPort SMS Control Codes

eibPort can send values via SMS. In order to properly generate text messages containing values, certain control codes must be embedded in the formatting string, corresponding to the EIS value.

First of all the appropriate EIS type must be specified. Initially a «-» is set, meaning that values are not being sent. If the type EIS3 (Time) or EIS4 (Date) is selected, then please use the control code «%s» within your text string (without the quotes!). eibPort will replace the %s with the corresponding value when sending the SMS. For all other EIS types, the value will be inserted as a number. Please insert the following control code at the appropriate place within your text string according to the following format:

“%[number of integer places, number of decimal places]f”

Example:

You want a floating point number with 5 integer places and 2 decimal places. Enter the following string:

“ ... The number is %5.2f the rest of your text ...”

If the number should be signed, simply enter a minus sign:

“ ... The number is -%5.2f the rest of your text ...”

If the exact number of places should be shown in the text:

“ ... The number is %1f the rest of your text ...”

If a percent sign (%) should be shown within the text, simply place the code %%.

“The tank is %.1f%% filled.”

The SMS will contain the following text:

“The tank is 82.3% filled.”

If a value of the type EIS 3 (Time) or EIS 4 (Date) is selected, then you need to use a “%s” in the text as a placeholder.

## EIB-LED

OFF	<b>eibPort</b> doesn't have an EIB connection.
RED	Blinking, <b>eibPort</b> is attempt to connect to EIB.
GREEN	<b>eibPort</b> has a connection to EIB.
ORANGE	<b>eibPort</b> is communicating with the EIB.

## ISDN-LED

OFF	<b>eibPort</b> doesn't have an ISDN connection.
RED	<b>eibPort</b> has initiated an ISDN connection.
GREEN	<b>eibPort</b> has an ISDN incoming connection.
ORANGE	<b>eibPort</b> is using two ISDN channels. (ie.: <b>eibPort</b> has received an external connection and is also sending a SMS)

## LAN-LED

OFF	<b>eibPort</b> doesn't have a LAN connection.
GREEN	<b>eibPort</b> has a LAN connection
ORANGE	<b>eibPort</b> has LAN traffic.

## Placing elements pixel accurate

The elements can be placed pixel accurate by the arrow keys of the keyboard. By the parameters X-Position and Y-Position the pixel values can be entered directly. The pixel values apply to the pixel in the upper left corner of an element. The origin (X-Position 0 and Y-Position 0) is the upper left corner of the page.


## Rename

Projects, pages and elements can be renamed at any time. The names will be listed in alphabetical order.

## Group address assignment

Group addresses can be typed in directly or inserted from the address table by a mouseclick. If an ESF file was loaded (see chapter configuration tool, File Transfer) all group addresses existing in the ETS project will be listed in the address table. You can reach the address table by clicking on the arrow button next an address input field. To select an address click twice on one and confirm with OK.

## Tip

 Pressing the space button on the keyboard creates a slash "/".

# Visualization User administration

With the user administration you can create several users and allow/forbid the access to visualization pages. Each user gets a password.

## Activate/deactivate user administration

The user administration can be activated/deactivated in the editor menu „File -> Preferences-> User Administration“. If deactivated each user has full access to the visualization.

## Create user

In the visualization editor click on the button



The user administration will appear:

With the button „Create new user“ you create a new user account. Assign a name as well as a login name and a password for the login. Afterwards define the access rights of the user.

Activate the checkboxes of the pages the user shall be allowed to access. If you enable a complete project automatically all pages within the project are enabled. Then click on „Accept Data“ and „Close“.

Attention: The user data will only be saved when you save the visualization project in the editor.

Consideration: Choose as possible no easy guessable passwords.

## Appendix 1: Status LED

Description of the LED Modes.

eibPort's current operating status is displayed by the LEDs located on the front. The LEDs have the following meaning:

Boot phase:

During the boot phase, the POWER LED is orange. This phase takes about 30 seconds. The end of the boot phase is indicated by a test of all LEDs, followed by the POWER LED glowing green.

### POWER - LED

OFF	The unit is not active. There is no current.
GREEN	The unit is active.
ORANGE	The eibPort is starting. (approx. 30 seconds)
Blinking every second	The BCU is either not or improperly configured. Resolve the problem using ETS.
Blinking every two seconds	The BCU is configured with incorrect data. (improper IP-parameters, MSN, Password)

### BMX-LED

OFF	No communication with the eibPort kernel.
RED	EibPort is in iETS mode-, blinking: iETS traffic.
GREEN	Communication with eibPort's kernel.
ORANGE	Fall back from iETS into the BMX mode.

### Hints:

1 The xPL-settings of the SlimServer have to activated. Open a Web Browser. Under <http://localhost:9000/> you reach SlimServer. You find xPL settings under **Server Settings>Network**.

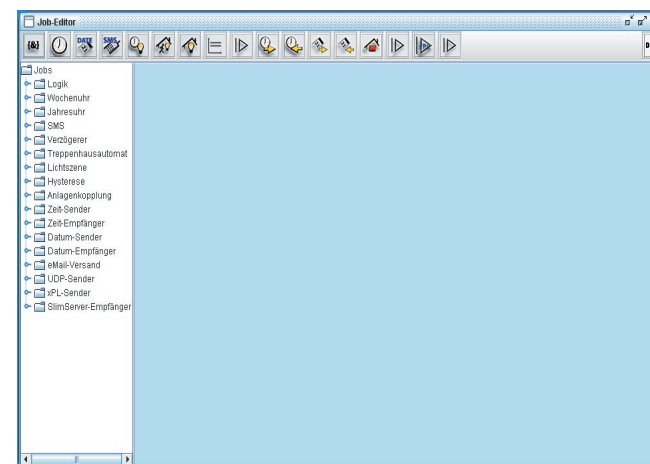
2. The service xPL- Hub has to run on all PCs, which be involved. See appendix 9 xPL prerequisite.

3. Before the SlimServer will be started, the service xPL- Hub has to run on the PC.

## Job editor

The eibPort provides numerous services. In the job editor you can parameterise the jobs.

The job categories are displayed in a tree structure left in the window. New created jobs are listed in alphabetical order. By clicking the key icon the tree can be expanded/reduced.



## tips for the job editor

### Copy, paste, delete

Jobs can be copied including the parameters. In the Job editor click on the copy icon. A copy of the element will be opened. A new element name has to be assigned.

### Names of projects and pages

The names of the jobs can be chosen free.

### Group address assignment

Group addresses can be typed in directly or inserted from the address table by a mouseclick. If an ESF file was loaded (see chapter configuration tool, File Transfer) all group addresses existing in the ETS project will be listed in the address table. You can reach the address table by clicking on the arrow button next an address input field. To select an address click twice on one and confirm with OK.

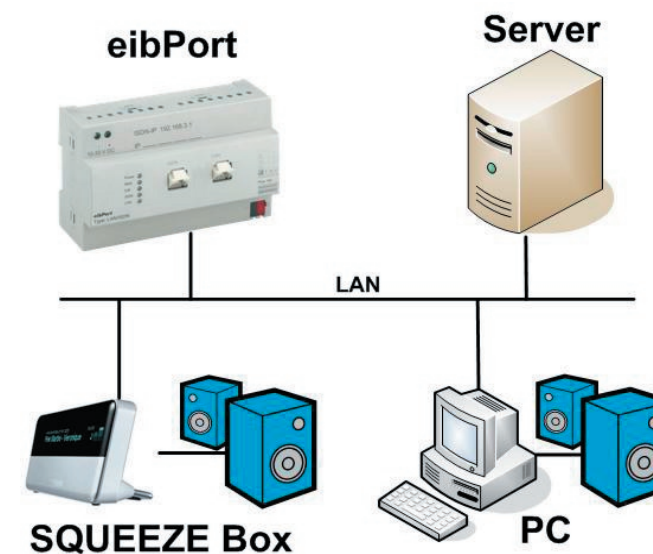
## Logic

All gates link EIS 1 values. You can set the output to be sent always when an input telegram is received or only when the gate is evaluated.

Type	Description
AND (UND)	The gate contains up to 32 inputs which are logically "AND"-ed to an output object.
OR (ODER)	This gate contains up to 32 inputs which are logically "OR"-ed to an output object.
XOR (EIS 1)	This gate contains up to 32 inputs which are exclusively "OR"-ed to an output object.  The link results in an 0 whenever all input objects are all 1 or all 0; otherwise the result is 1.
Object	The output has the status of the value which was last sent on any input.
NAND, NOR NAND	The output of the evaluation will be negated for the given evaluation.
NOobject	The output value is of the type EIS 1: 0 at an input value disparate 0 1 at an input value 0  The statu of the value which was last sent on any input is determinative.

## Music Control

The eibPort provides the opportunity to control the music playback. The job „xPL- sender“ sends in reason of a EIB group address commands to a SlimServer. This commands could be play, stop, skip, back... The SlimServer controls the MP3-stream of the SQUEEZE Box. So it is possible to control the music playback with EIB push buttons or the visualisation.



### Server

On the PC (Server) runs the **SlimServer** Software (freeware). This Software also organizes the MP3 files to playlists.

### SQUEEZE Box

The **SQUEEZE Box** is a networkclient which is controlled by the SlimServer.

### PC as a music player

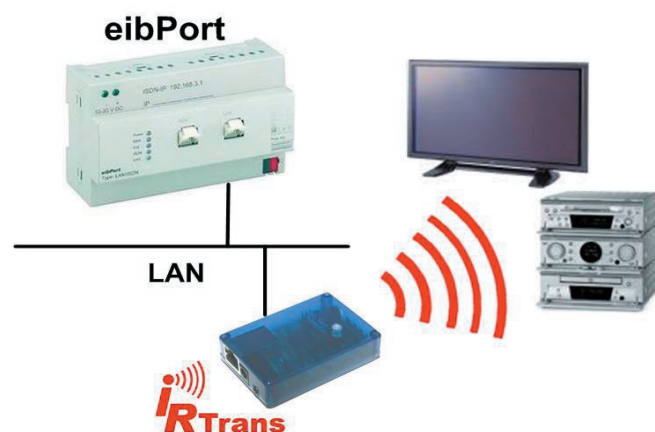
With **softsqueeze**, a softwareversion of the SQUEEZE Box, every PC can be used as a music player. Softsqueeze is also freeware.



## applications

### eibPort - IR Trans

Together with the IR Trans the **eibPort** can send infrared signals in reason of a group address over the IR Trans. This job UDP-Sender make it possible to control devices, like tv, dvdplayer and hifi-systems..., every with an infrared remote control, over EIB push buttons or the visualisation. For this application is the **IR Trans ethernet with a databank** necessary.



### IR Trans ethernet with DB

The IR Trans is kind of infrared remote control, which can learn commands and has a network adapter. The IR Trans can interpret received UDP-datagrams with his database. The database includes afore learned commands. Learning and saving of commands will done by a pc- software.

**Hint:** The new learned commands are first activated after reloading the IR Trans database

Information, instruction manual and software about IR Trans can you find under [www.irtrans.de](http://www.irtrans.de)

## Timer

**eibPort** includes an easy to configure week time switch.

### Profile:

You assign the user a 24 hour profile. Each profile can be either a normal day or a special day. Special days are profiles which can be used for events such as vacations, holidays or parties, since more often than not these days will require different switching times.

By clicking the time bar once you can set the on switching time. Clicking twice sets the off switching time. Clicking three times deletes the assigned switching assignment Per channel (group address) one enable object can be defined. The enable object can contain up to five group addresses.

The day profiles created in the one-week time switch can be used in the annual time switch.

### Hint:

The year timer switches always at 24:00. From this it follows that changes are taken on not until the next day.

### Output type: Link to week timer

Chose a mode from the menu (week mode, special days 1 -3) and assign the days on the year time bar with the mouse.

To delete day profiles on the year time bar choose the mode inactive and click on the profile.

If the output of the year timer shall start the corresponding week timer the group address of the output has to be linked to the enabling of the week timer.

### Output type: Enable group address (EIS 1)

This timer type sends once a 1 Bit telegram (EIS 1) with the state on at the assigned days.

Choose the state ON to assign switching days. Choose the state OFF to delete switching days.





## SMS Elements

eibPort can send SMS messages based upon events within the EIB. The telephone number must be specified. An activation object can be assigned, for example from the timer. The triggering group address (EIS 1) – the input object – and when desired the value object should be specified to send the corresponding value within the SMS message. The corresponding EIS-Type must be specified.

The following events can be configured to trigger an SMS message:

On 0 or on 1: the SMS will be sent when a 0 or 1 is received.

On status change 0 or 1. The SMS is sent when the value changes from 0 to 1 or vice-versa.

Factor and offset are used to manipulate the sent values.

SMS-Text: this value configures the text which will be sent. For specifying values out of the EIB, you must use a specialized formatting syntax (please see Appendix 2).

### Hint:

*The telephone number must be entered with the international area code. You have to observe the following syntax:  
+[country prefix][local prefix / handy prefix without the first 0][telephone number]*

### Example:

*When you want to send a sms message to a handy in Germany with the number 0123-456789, you have to enter this number:*

**+49123456789**

country prefix:

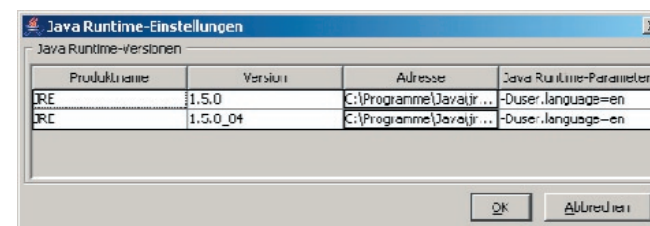
germany:	+49	austria:	+43
netherlands:	+31	Spain:	+34
Norway:	+47	Denmark:	+45



## Delay Unit (EIS 1)

Gate with one input and one output. The action of the input can be delayed separately from the output.

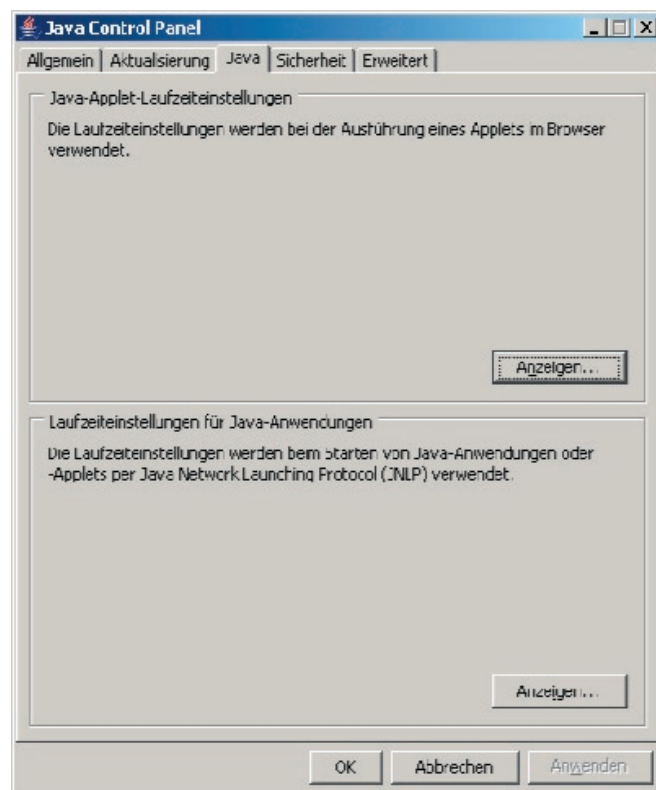
- Delay can be set from 1 – 65.000 seconds.
- Activation object



**Consideration:** If you have installed several Java versions be sure to enter the parameter for all the versions.

Close the Java Control Applet

Close the browser and any other applications that need Java. Restart the browser and access eibPort. Now the preferred language will be set.



Enter the parameter for the preferred language:

German	-Duser.language=de
English	-Duser.language=en
Swedish	-Duser.language=se
French	-Duser.language=fr
Spanish	-Duser.language=es
Dutch	-Duser.language=nl
Italian	-Duser.language=it

## Staircase light function - Auto reset (EIS 1)

If the input object receives a telegram with a value of 1, then it sends a 0 after a preconfigured delay.

- Delay can be set from 1 – 65.000 seconds.

- Activation object

Options

Invert: this means if the input object receives a 0 it sends a 1 after the delay.

Trigger: If the "ON" telegram is received again during the delay, the delay countdown will be restarted to the preset value.

Stop: If this option is selected the current delay countdown (if present) will be stopped if the output object receives a telegram. The output object not send.

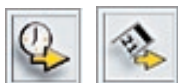
## Light scene(EIS1, EIS5, EIS6)

Up to 28 EIB devices can be grouped. Each device can be assigned an individual value which it should receive. The light scene is assigned a group address and a value by which it should be triggered (0 or 1). This effectively means that each group address can contain two light scenes– one triggered by a ZERO, the other one triggered by a ONE. The activation object allows the light scene to be enabled or disabled (for example through a timer function). The save object allows the light scene to be reprogrammed externally. Sending a telegram with the value ONE to the save object enables all the values of the group addresses in the scene being overwritten.

## Receive time and date

eibPort can receive time telegrams (EIS 3) and date telegrams (EIS 4) to set the internal system clock. If the difference of the eibPort system clock is too great it will be reset. Activation objects are available. In time telegrams additionally the date can be interpreted; In date telegrams additionally the time can be interpreted. The tolerable





difference before the system clock will be corrected has to be entered in seconds.

## Send time and date

eibPort can send time telegrams (EIS 3) and date telegrams (EIS 4). Activation objects are available. The time between sending two telegrams has to be entered in seconds.

## Service (Timers, Light scenes)

Normally timers and light scenes are only changeable in the Editor. To make timers and scenes changeable by the customer himself, it is possible to place the element „Link to Job-Editor“ the Visualization Editor. Beneath „Target“ choose the timers and scenes you want to release and coordinate the description with your customer. These in the Visualisation-Editor placed e.g. timers are now adjustable in the visualisation.



## Threshold switch

There are two important switching events for the threshold switch as you can see in the graphic.

First switching event: exceeding switching point 1

Here the upper threshold is exceeded. By exceeding the upper threshold the timer „dead time“ starts. When the timer has expired and the input condition - exceeding the threshold 1 - is still fulfilled the parameterized value for „upper threshold“ will be sent to the EIB. The corresponding EIB group address is assigned in the parameter Output. The output value may be EIS 1,5, or 6. The dead time shall prevent sending the output value constantly to the EIB if the input value hunts around the upper (lower) threshold.

After sending the output value to the EIB the timer „Repeating time“ starts. When the repeating time has expired and the input condition - exceeding the threshold 1 - is still fulfilled the output value will be sent again. This program loop will go on until the input condition is not fulfilled any more (see graphic).

28

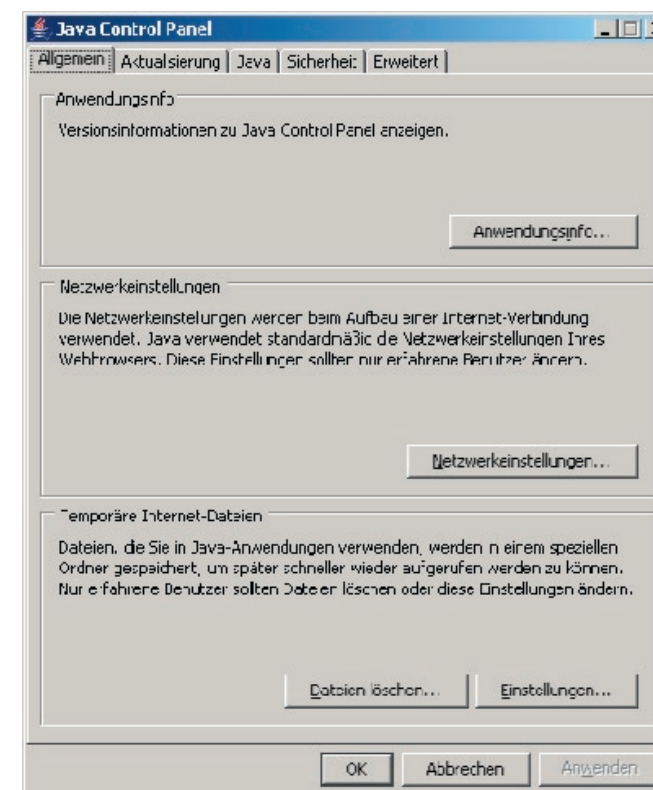
## Change language

To change the language of the eibPort visualization a parameter has to be changed or added in the Java software. Follow these instructions:

In Windows click on start -> System -> Control Panel

Click twice on the Java icon

Click on the tab „Java“



Click on „show“

77

## Updates for eibPort

eibPort constantly is improved and extended. The company b.a.b technologie offers its customers a free update. This update is part of our service. The only thing you have to do is give us access to your eibPort via ISDN or Internet.

### Expiration:

- 1) send an E-Mail to [info@bab-tec.de](mailto:info@bab-tec.de)  
please indicate here
  - a) the telephone number of the ISDN connection and the access password or
  - b) the Internet URL
- 2) we send you an E-Mail with the date of the update. Please give us access to your eibPort at this day
- 3) after the update you receive a E-Mail with the confirmation.

## Recommendations for updates

In the following text we talk about an internal and external IP-address. By the internal IP address one understands the Ethernet IP-addresses which are only known in the network "behind" the router. The external IP-address is the IP-address, which is known in the Internet.

### Firewall:

Here the Ports 22, 80 and 1735 must be open.

### Router:

The external IP-address of the Router must be known to the company b.a.b technologie GmbH. This IP-address may be a static or a dynamic IP address. Inquiries on the Ports 22, 80 and 1735 must be forwarded to the internal IP-address of the eibPort.

### eibPort:

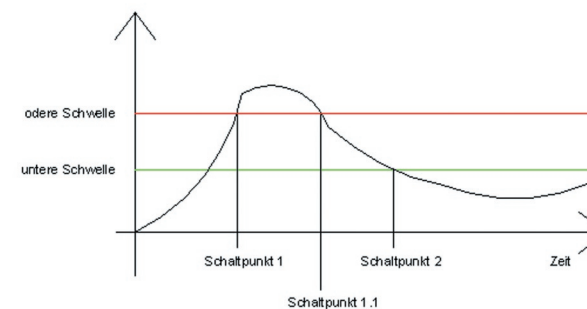
With the configuration tool internal IP-address of the eibPort and the default gateway address is assigned. The default gateway address is the internal IP-address of the router.

If the input value is between the upper and the lower threshold the threshold switch does not send any telegram.

Second switching event: falling below the switching point 2.

By falling below the lower threshold the timer „dead time“ starts. When the timer has expired and the input condition - falling below the threshold 2 - is still fulfilled the parameterized value for „lower threshold“ will be sent to the EIB. The corresponding EIB group address is assigned in the parameter Output. The output value may be EIS 1,5, or 6. The dead time shall prevent sending the output value constantly to the EIB if the input value hunts around the upper (lower) threshold.

After sending the output value to the EIB the timer „repeating time“ starts. When the repeating time has expired and the input condition - falling below the threshold 2 - is still fulfilled the output value will be sent again. This program loop will go on until the input condition is not fulfilled any more (see graphic).



## Hysteresis switch

The element Hysteresis is a comparator with two thresholds. The thresholds are called upper and lower threshold. If at the Input a value is received it is compared with the thresholds. The result is a binary value (0 or 1), EIS 1. Depending on the last state the new state will be calculated according to the following definition: If the last result was 0, then the Output state changes to 1 if the received telegram value exceeds the upper threshold.



If the last result was 1, then the Output state changes to 0 if the received telegram value falls below the lower threshold. The Input value can only be received by the Input object. The upper and lower thresholds may be object values or constants.

The calculation of results is started when the Input object or the threshold objects receive a telegram. The parameterized EIS-type defines how the Hysteresis switch calculates the value.

EIS 1	switch	1Bit
EIS 2	dim	1Bit, 4Bit, 8Bit
EIS 3	time	3Byte
EIS 4	date	3Byte
EIS 5	floating point -671088,64-671088,64	2Byte
EIS 6	relative value 0-255	1Byte
EIS 7	drive control	1Bit
EIS 9	floating point (IEEE)	4Byte
EIS 11	counter value	4Byte
none	-	-

If „none“ is chosen the object value “Constant” is taken. For the EIS-types 5 and 9 the object value results from the EIB definition.

If the EIS-type 1, 2, 3, 4, 6, 8, 10 or 11 is chosen, the object value is defined by Factor and Off set. The received telegram value will be multiplied with the Factor and then the Off set will be added.

If „none“ is not chosen, the object value is forced into a valid area of the Hysteresis switch by the parameters min value and max value. The min and max values define the areas of the variable thresholds. If the object value is below the min value, the min value will be set as object value. If the object value is above the max value, the max value will be set as object value. There is no plausibility test for the values. It is possible that the min value is above the max value. Because of the defined calculation sequence the result will be valid.

## IP-Addresses in the internet

Mostly the eibPort is connected to the internet by a router. In order to reach the eibPort an IP address must be assigned.

### Static IP address

The static IP address will always be the same. An eibPort with static IP address can be reached from the internet by this IP address. Static IP addresses are available at the providers.

### Dynamic IP address

Each device connecting to the internet (which has no static IP address) automatically gets a dynamic IP address from the internet service provider. The address changes with each connection. That is why the eibPort cannot be reached by a dynamic IP address. Even when the eibPort is connected to a router which is online permanently it is not sure that the IP address stays because some providers automatically disconnect each 24 hours.

In the internet there are free services (e.g. dyndns.org) that link dynamic IP addresses to a domain. You get a domain like myeibPort.dyndns.org by which you can always reach the eibPort. Necessary to use such services is that the router supports auto connection to the internet service provider. Consider your router's manual for more information.

An description example for connecting a router to a DNS service can be found in the internet: <http://www.nwlab.net/tutorials/dsl-server/index.html>.

to the eibPort respectively the camera. Concerning the eibPort the port 80 is for the visualization and the port 1735 is for the Java applets. The port for the camera in the rule is the same that has been assigned to the camera.

#### Example for a routing table with DynDNS service:

80 --> 192.168.1.1:80 (visualization)  
1735 --> 192.168.1.1:1735 (Java-Applets)  
81 --> 192.168.1.2:81 (Camera)

#### Settings for the camera element in the visualisation

URL: <http://www.eibPort.dyndns.org:81>

*Consideration: in order to access the camera from the intranet the router has to support internal requests to external ip addresses. Refer to the router's manual. If the router does not support this function another camera element for internal requests has to be inserted. As URL the internal ip address of the camera must be entered:*

*Example: <http://192.168.1.2:81>*

Using the identified values for the Input and the upper and lower thresholds the Output value will be calculated. There are two different cases concerning the output value: 0 or 1.

If the last state of the Output value before receiving an activating telegram was 0, then the Input value has to be above the upper threshold to set the Output value to 1. If the last state of the Output value before receiving an activating telegram was 1, then the Input value has to be below the lower threshold to set the Output value to 0. If the Output value changes a telegram will be sent. If there is no change of state a telegram will only be sent if the parameter „send changes only“ is not set. If the parameter „send changes only“ is set a telegram will only be sent, if the Output value state changes. If the parameter is not set each time the Output value is calculated a telegram will be sent

## eMail- Versand

The eibPort can send eMail based upon events within the EIB.

### Inputobject

This object starts the job, the sending of an eMail (q.v. send condition)

### Value object

The eibPort can send values via eMail. In order to properly generate text messages containing values, certain control codes must be embedded in the formatting string, corresponding to the EIS value (q.v. appendix 2). With „Factor“ and „Offset“ kann you edit the value.

### send condition

Choice of the send conditions. The following conditions to be available: „Edge“, „OFF“, „Falling edge“, „ON“, „Rising edge“, „ON or OFF“ and „Rising or falling edge“.



## email- Provider

Here can you choose the entry for an eMail account, of the configurationtool, over this the eMail will be send. The numeration (entry 00; entry 01;...) result of the succession of the accounts in the configurationtool (see appendix 10).

### typ

Here can you choose the typ of the eMail, pertaining to the following fields.

### name / eMail- Address

This fields are for the name and the eMail- Address of the addressee. When none address filled in for the sender, then the address of the configuration will be used.

### subject

This text is shown in the subject heading of the receiver.

### text

In this field can you enter the textinformation of the eMail.

### eMail- Settings of the Configurationtool

For using this job are some settings in the Configurationtool necessary. You have to add an eMail-account. In the configurationtool under configuration > eMail can you do this with the button „add“.

After you enter a name of the provider, you have to enter the settings of the SMTP server and the encryption. This settings are dependent of your eMail- provider.

You have to enter the IP adress of the DNS Server from your e-mail provider, too. This settings can you find under network settings in the Configurationtool. (see appendix 10)

With the button „remove“ can you erase the accounts which you don't need any more.

## Settings Camera

IP-Address 192.168.1.2  
Standard Gateway Address  
192.168.1.200  
Port 81

## Settings PC

IP-Address 192.168.1.3  
Standard Gateway Address  
192.168.1.200

## Settings Router

IP-Address 192.168.1.200

In the network you have to differ between external and internal ip addresses. The internal ip addresses are static ip addresses that are assigned to the devices in the intranet (eibPort, camera, PC, router). By the external dynamic ip address the intranet can be accessed by the internet. The internet service DynDns.org administrates the external ip addresses. The router translates the external ip addresses into the internal ip addresses.

In the router a routing table must be created. This function can be found at different places in the router menu depending on the model. Search for items like DMZ or Port Forwarding.

The function for the service DynDns.org must be activated and configured. The Input of routing rules differs from router to router but generally follows the scheme

[Port number] --> [internal ip address]:[Port number].

By the port number the eibPort and the camera are differed. In the example the eibPort can be accessed by the port 80 and the camera by the port 81.

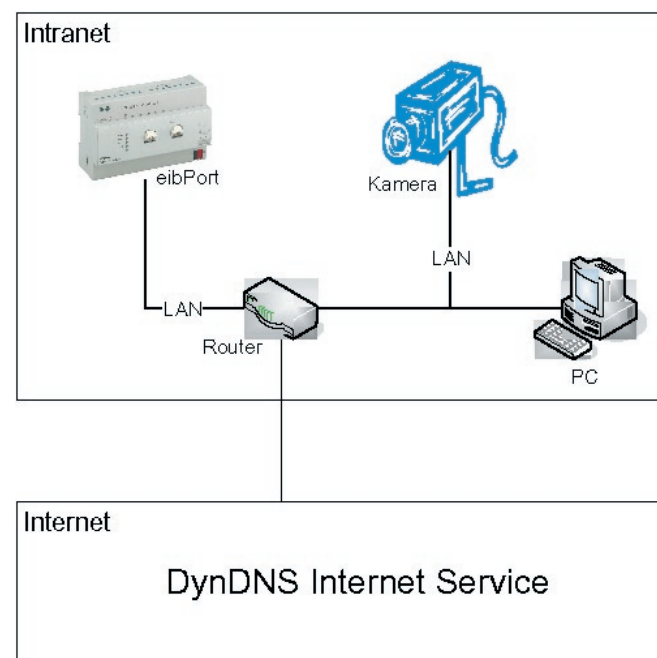
The internal ip address is the address that was assigned



## Cameras and internet

This chapter describes the settings for accessing eibPort and cameras by the intranet and also by the internet. The IP addresses given in this chapter are examples and have to be adapted possibly.

### Scheme of the network structure



### Settings eibPort:

IP-Address 192.168.1.1  
Standard Gateway Address 192.168.1.200  
Ports 80, 1735, 50 000 - 50 002

## UDP- sender

The job UDP- sender sends UDP- datagrams in reason of the input object to members in the LAN

### input value

The input objekt appoint which of maximal 8 UDP- datagrams will be send. The values type EIS1 und EIS14 will automatic interpreted q.v. trigger value.

### Hostname/IP-Address

This field is for the IP address of the receiver. For example the IP of the IR Trans.

### port number

This field is for the used port of the receiver.

**The IR Trans use the port: 21000**

### command mode

Here can you choice the command mode. The IR Trans use received ASCII commands to send IR commands of his database (syntax q.v. data to send). The entry „disable“ switch the function off. If you chose „binär“ you have to enter the data to send in hexadecimal.

### wildcard

is this entry activated, the eibPort send this command at **each** received input object (independent of the trigger value).

### trigger value

The „trigger value“ define which command will be send. Example:

The eibPort receive an input objekt (EIS 14), with the value „147“. Now the eibPort sends all UDP-datagrams which have a trigger value = 147.

Range of trigger value: 0-255 (EIS14).

## data to send

Here will be enter the data/command to send.

Syntax of the ASCII-string from the IR Trans:

**snd** <remote>,<command>,<ledselect>

**remote** name of the devices or remote control, this name will be appoint during the learning- process e. g. dvdplayer.

**command** name of the command, this name will be appoint during the learning- process e. g. play

**ledselect** Chocie of internal or external send-led (optional)  
**I** internal  
**E** external  
**B** both

Example: snd dvdplayer,play

The parameter **ledselect** is optional, otherwise the devices settings for the sendled are used.

If you chosse „binär“ you have to enter the data to send in hexadecimal. Example: 03 48 23 F3 AC D2



## xPL- sender

This job sends xPL-datagram in reason of the input objekt. The xPL- datagram could be heard from every xPL-device in the LAN. The SlimServer is one of these devices.

### input object

The input objekt appoint which of maximal 16 commands will bs send. The values type EIS1 und EIS14 will automatic interpereted q.v. trigger value. The eibPort works top down the list of commands.

### service type

The service type define the type of xPL-datagram. There are 3 types „Command“, „Status“ and „Trigger“. For the most applications is the entry „Command“ expedient. Because the most applications should be excuted. The entry „disable“ switch the function off.

## iETS:

**eibPort** contains an integrated iETS Server. To connect to the iETS Server you need the iETS Client from the EIBA. The combination of iETS Client and Server enables the complete ETS functionality over ISDN or the network.

Please note if the iETS-Server is running on eibPort no jobs will be execute and no EIB-Telegrams will be received.

Important: Close the iETS Client (in the ETS) with „File - Exit“ So the iETS-Server will be shut down in eibPort correctly.

## EIB Interworking Standards

EIS 1	Switching	1Bit
EIS 2	Dimming	1Bit, 4Bit, 8Bit
EIS 3	Time	3Byte
EIS 4	Date	3Byte
EIS 5	Floating Point Value -671088,64-671088,64	2Byte
EIS 6	Relative value 0-100%	1Byte
EIS 7	Drive control	1Bit
EIS 9	Floating point (IEEE)	4Byte
EIS 11	Counter	4Byte
EIS 14	Counter	1Byte

## Object structure

eibPort maps over the communication object structure of the EIB. This means that every object can be assigned up to 5 group addresses. Therefore you can recreate, for example, the group address assignment of an actuator. Consequently eibPort is always informed about the actual status of the actuator (not the group address) and you are spared the time consuming process of processing multiple responses. This approach simplifies the creation of logical groupings, since every input object of the gate can contain up to 5 group addresses.

eibPort supports 32 main groups (using 2 or 3 length notation). The groups are broken down in the following manner

0- 15	real EIB address space
16-31	virtual EIB address space

The real EIB addresses are sent on the EIB.

The virtual EIB addresses are only sent within the network. This represents a significant advantage because it effectively reduces the traffic on the EIB. Visualisation in the network can switch timers in eibPort without generating EIB traffic.

Syntax: After the first group address, place the additional group addresses in parenthesis, separated by commas.

le.: 2/12(2/13,2/14,2/15,2/16)

### wildcard

is this entry activated, the eibPort send this command at **each** received input object (independent of trigger value).

### trigger value

The „trigger value“ define which command will be send.

Example:

The eibPort receive an input objekt, with the value „147“. Now the eibPort sends all commands which have a trigger value = 147.

Range of trigger value: 0-255 (EIS14)

### xPL broadcast

is this entry activated, this command will be send to **all** xPL-device.

### xPL vendor/device/instance

These settings are for addressing the xPL-devices. The Address of a xPL-device consist of „xPL-vendor“, „xPL-device“ and „xPL-instance“.

[vendor]-[device].[instance]

Adress of the SlimServer:

„slimdev-slimserv.instance“

You can find these Values in the xPL-Manager under xPL-Device. The instance of the SQUEEZE Boxes are their names, e.g. livingroom. You must be pointed out the maximal length of 15 characters. YOu can enter name of the SQUEEZE Box with the Slim server under Settings > Player.

Address of the eibPort

„babtec-eibport.[serial number]“

### xPL schema

The xPL-schema characterise the device type and define the a range of commands. A decive can support more than one schema.

Example: The SlimServer support the schema „Audio.Slimserv“ (features like play, stop, skip, back) and the schema „OSD.Basic“ to control the display of the SQUEEZE Box.

## xPL command

The choice of commands depends on the elected xPL-schema. Some commands don't need more information, the entry „additional data“ is not necessary.

## additional data

This input box is for additional information, some commands need them. Example for commands: The xPL-command „playlist play“ (xPL-schema Audio.Slimserv) needs the name of the playlist.

With the command „Write“ (xPL-schema „OSD.Basic“) the SQUEEZE Box can display text information written under additional data.

Some commands are signed with „value“. These commands can insert values into the text with the control character „%f“. The appliance of the control character is described in appendix 2.



## SlimServer receiver

This job sends the title information which is sent by the SlimServer on the EIB. This information can be shown at the visualization or at EIB displays. The title information is sent by the Slimserver as xPL datagrams in the network. The eibPort receives these and sends it as EIS 15 value on the EIB. For this job has the service xPL-Hub to be installed, see appendix 9.

## Attitudes

Name and release object have the same meaning as in the case of the other jobs.

## xPL broadcast?

If xPL-broadcast is active, all xPL-datagrams from all SQUEEZE boxes will be worked up. Then the attitude xPL-Instans is not more necessary.

is 192.168.1.1).

Subnetmask: enter the subnetmask (standard is 255.255.255.0).

Standard Gateway: enter the ip address of the router in the network.

Click on the category ISDN:

Euro ISDN connection is a standard for Integrated Services Digital Network, a communications service with 64kBit/s. eibPort is connected via a multiple subscriber connection (not DDI!). During installation, you must select a MSN to be used for eibPort. Connection is directly to the NTBA (ISDN-Adapter UK0/S0). There are 2 lines available to ensure that eibPort can send (SMS) and receive at the same time. The IP address for an ISDN connection is factory set to 192.168.3.1 and cannot be changed.

Login Password: enter a password which is needed when establishing a remote connection to the eibPort.

Amtsholung: Telephone installations need a prefix number to dial out. Enter the number.

Eingehende MSN: At "\*" the eibPort reacts on all incoming calls. This setting should not be changed.

Ausgehende MSN: enter the MSN by which the eibPort can dial out. At "0" the standard MSN of the telephone installation will be used.

To transfer the configuration click on Save data to eibPort.



Then username and password are requested.



The default access data is:

**User name: admin**

**Password: eibPort**

This administrator access data can be changed in the user administration (see user administration configuration tool).

## Initial setup

The initial setup includes the parameterization of the physical address, the network addresses and the ISDN settings.

Browse to the category General:

eibPort name: Enter a name or description for the eibPort

physical address: enter a free physical address

Click on the category network settings:

IP address: enter a free ip address by which the eibPort can be accessed (the standard

## xPL- Instanz

The xPL Instanz determines which SQUEEZE Box is used as a source. You can find the value in the xPL-Hal Manager under xPL Device. The instance of the SQUEEZE Boxes are their names, e.g. livingroom. You must be pointed out the maximal length of 15 characters. YOU can enter name of the SQUEEZE Box with the Slim server under Settings > Player.

## Output

Enter the group address to which one of the information (artis, album, title) will be sent. (EIS 15).

## Modus/representation

The text can be represented in the most different way. The following representation variants can be chosen:

left-justified

right-justified

further will still follow.

More representation variants will be implement.

## xPL Remote.Basic Empfänger

The eibPort can not only send xPL-Messages, it also can receive them from other xPL- devices. This job sends EIB-telegramms dependent of received xPL-telegramms. In this way other xPL devices can control EIB funktionen. It is prerequisite for this that the schema Remote.Basic is supported.

## xPL broadcast?

If xPL-broadcast is active, all xPL-datagrams from all xPL-devices will be worked up. The attitude xPL-Instans is not more necessary.





## xPL vendor/device/instance

These settings are for addressing the xPL-devices. The Address of a xPL-device consist of „xPL-vendor“, „xPL-device“ and „xPL-instance“.

[vendor]-[device].[instance]

Adress of the SlimServer:

„slimdev-slimserv.instance“

You can find these Values in the xPL-Manager under xPL-Device. The instance of the SQUEEZE Boxes are their names, e.g. livingroom. You must be pointed out the maximal length of 15 characters. YOU can enter name of the SQUEEZE Box with the Slim server under Settings > Player.

xPL-Address of the eibPort

„babtec-eibport.[serial number]

See appendix 9, too.

## zonen-“broadcast“

If zonen-“broadcast“ is active, all xPL-datagrams of all zone will worked up.

If this entry is not active only the xPL- datagrams of the zone, which name is filled in will worked up.

## „remote“ zone

The name of the zone is dependent of the devices. The zone of the Slimserver has the name „slimserver“.

## device -“broadcat“

If device-“broadcast“ is active, all xPL-datagrams of all xPL-devices will worked up.

If this entry is not active only the xPL- datagrams of the xPL-device, which name is filled in will worked up.

## „remote“ device

The device name can be chosen at the most xPL-devices freely. Please read the manual of the xPL-device.

## Hint:

*All information of the xPL-devices are shown on the monitor of the xPLHal Manager. See appendix 9.*

## Initial configuration

Preparing eibPort Type LAN for communication is accomplished in two steps and preparing eibPort Type LAN/ISDN is accomplished in three steps.

## EIB

Assignment of the physical address by the Configuration Tool (Button System on the start screen). Hereby a PC is connected to the eibPort via the ethernet network or directly via a cross over cable.

## LAN

Assignment of the network addresses by the Configuration Tool (Button System on the start screen). eibPort has the pre-assigned IP address of 192.168.1.1. Configure the computer which you will be using to be within the same address room (for example 192.168.1.10).

## ISDN (only eibPort Type LAN/ISDN)

Initiating communication via ISDN requires a Dial Up Network connection between your computer and eibPort. You require the telephone number of the ISDN connection as well as the password. The password is preset to eibport+2 . The ISDN IP address is 192.168.3.1 permanently assigned. During connection between your computer and eibPort the IP number of your computer will be automatically be determined.

## Configuration tool start

Be sure that the PC is connected to the eibPort via the LAN or directly via a cross over cable. To access the eibPort at the initial setup the PC must be assigned to an ip address in the range

192.168.1.x (except 192.168.1.1)

(see Appendix 5). Open a browser and enter the IP address 192.168.1.1 in the address bar. The eibPort start page appears. Click on the system button and enter the device PIN you got with the eibPort. This PIN is for identifying the eibPort and is unique. It can not be changed. After Input a ssh-conncction is enabled.

## Important Considerations

Work on low voltage systems and on the EIB should only be performed by trained and qualified personnel.

Installation and connection of the bus mains, the 10-30V mains as well as the units being installed must be performed in accordance with the current DIN VDE guidelines as well as the EIB Handbook.

This component is intended to be installed rail mounted according to DIN-EN 50022 within a distributor box. The unit must be installed in an environment according to the system specifications and the safety guidelines of the device. The operating temperature and humidity must be observed in all installations!

The line with integrated choke cannot be used for the operating voltage!

Safety and regulatory compliance standards

- DIN EN 55024 Einrichtungen der Informationstechnik
- DIN EN 60950 Sicherheit von Einrichtungen der Informationstechnik.
- DIN EN 50090-2-2 Elektrische Systemtechnik für Heim und Gebäude

CE- Symbol according to:

- EMV- Richtlinie (Wohn- und Zweckbau)
- EN 50081-1
- EN 50082-2
- EN 50090-2-2

## powerstatus

On	Only when the xPL-device is on, the xPL-datagram will worked up
Off	Only when the xPL-device is off, the xPL-datagram will worked up.
don't care	The powerstatus of the xPL- device has no influence of the job.

## Entry#

The entry number will send as value, when the send mode EIS 14 is selected.

## Outputs

Chose a group address. It will be send of the EIB at the receiving of the corresponding Key code.

## send mode

the send mode define the Information, which will be send.

EIS 1:	toggle
EIS 1:	on
EIS 1:	off
EIS 14:	with the entry number as value
EIS 15:	the Key code as text will be send

## Key code

The Key code to typed in here is dependent on the xPL device. Read the manual of the xPL device or use the xPL monitor of the xPLHal manager to get this information. At the xPL-monitor you can see the key code of the xPL-datagrams in the network in plaintext.

Additional you can enter here „RE:.“ (RE colon point plus), then the key code of all recived xPL- datagrams will be send as text of the corresponding group address. Save the job, open the eibPort bus monitor and now can you see the received key code in the EIB bus monitor, too.



## IRTrans receiver

This job makes it possible, in connection with the IRTrans, to trigger events in the EIB with every IR remote control. The IRTrans is kind of infrared remote control, which can learn commands and has a network adapter. The IRTrans can receive IR commands and send dependent of this UDP datagrams. The eibPort receives this UDP datagrams and sends EIB telegrams on the EIB depending on the configuration.

**For this application is the IRTrans for ethernet with database necessary.**

Before you can use this job, the IRTrans has to learn the IR commands. Learning and saving of commands will done by the IRTrans pc- software. The names of the remote controls and commandos are for the configuration of this job necessary.

*Hint: The new learned commands are first activated after reloading the IR Trans database*

Information, instruction manual and software about IRTrans can you find under [www.irtrans.de](http://www.irtrans.de)

### Port number

only the UDP- datagrams of this port will worked up by this job. Use favoured the port 21001. Check the „IR Relay Cofiguration“ of the IRTrans with his web interface.

*Hint: Don't use the port 21000, this used by the IRTrans for other functions.*

### IRTrans broadcast

If this entry is active, all datagrams from all IRTrans modules in the LAN will be worked up.

If the entry isn't active, only the datagrams of one IRTrans modul will worked up. You have to enter the name of the IRTrans modul.

### IRTrans name

Here can have you to enter the name of the IRTrans modul, if the entry IRTrans-“broadcast“ isn't active. The name of the IRTrans can entered at the IRTrans server software.

**40**

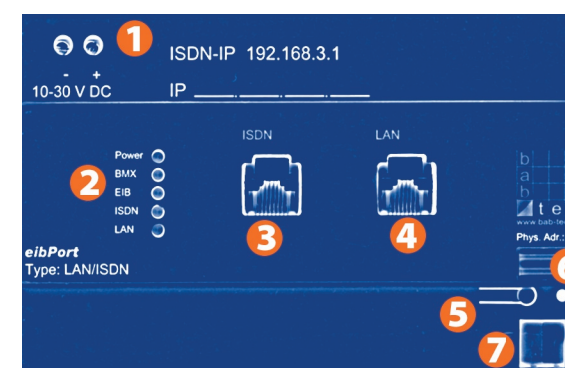
## Installation and Setup

### Connections

#### Hardware overview

Type LAN/ISDN overview:

1	Power supply 10-30 V DC
2	Signal-LED's (also see appendix 1)
3	RJ 45 Jack for Euro ISDN
4	RJ 45 Jack for Ethernet LAN
5	Programming push button EIB-BCU
6	Programming-LED EIB-BCU
7	Bus terminal EIB



### Mains Input

Operating voltage 10-30V DC

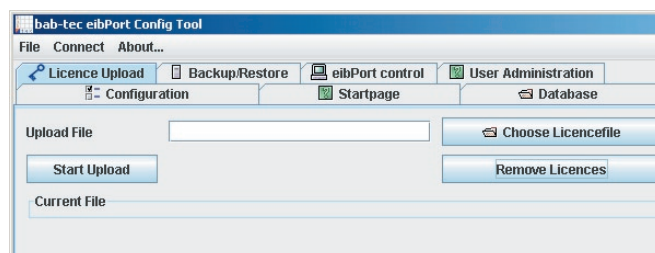
Consumption: <= 5 VA

Power supply via EIB

**65**

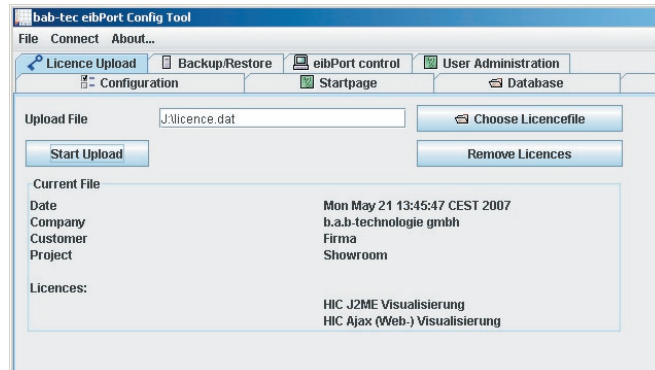
### Execute the following steps:

1. Connect the eibPort
2. Start the ConfigTool - to this you need the string of the eibPorts as well as user name and password
3. Click on the rider licence upload - the following mask is shown.



4. Choose the path of the licence file and start the upload.

The licence will be shown.



The licensing is completed, you can leave the ConfigTool.

### "RC" broadcast

The IRTrans modul can include more than one remote control. If this entry is active, all commands from all remote controls (all learned) will be worked up.

If the entry isn't active, only the commands of one remote control will be worked up. You have to enter the name of the remote control.

### "RC" name

Here can you enter the name of the remote control. This name was appointed during the learning- process.

### Entry#

The entry number will send as value, when the send mode EIS 14 is selected.

### Outputs

Chose a group address. It will be send of the EIB at the receiving of the corresponding Key code.

### send mode

the send mode define the Information, which will be send.

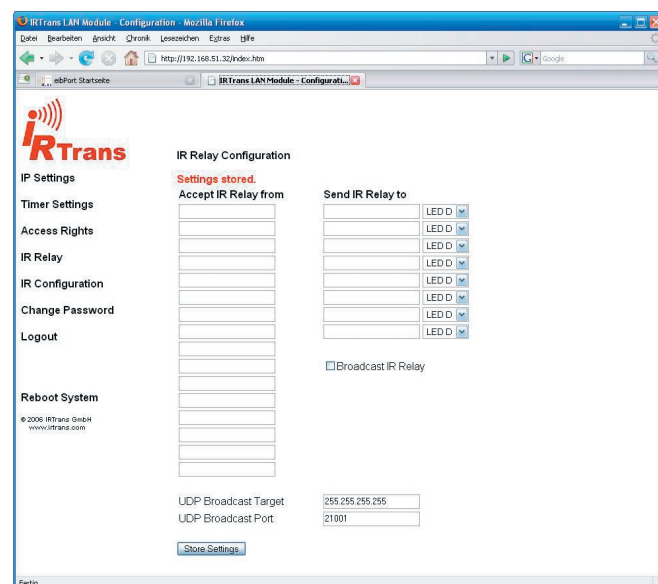
- EIS 1: toggle
- EIS 1: on
- EIS 1: off
- EIS 14: with the entry number as value
- EIS 15: the Key code as text will be send

### Key code

You have to enter here the command. This command will be appointed during the learning- process with the IRTrans software.

*Hint: The learning of remote controls and commands for the IRTrans modul happens with the IRTrans software. The new learned commands are first activated after reloading the IR Trans database.*

Check the settings of the IRTrans. The settings of the IRTrans are done at the web interface. Open your webbrowser, enter the IP address of the IRTrans and connect. It will be opened the web interface of the IRTrans (read additional the IRTrans manual).



Check the „IR Relay Configuration“. Enter the following parameters

UDP Port	= 21001
Broadcast Adresse	= 255.255.255.255
UDP relaying	activated

**Hint:** The eibPort can only write the information into the database, if the communication between the database and the eibPort works properly. A physical interruption leads to the loss of the data.

## Startpage

The startpage of the eibPort can be loaded with different options or with a own picture /graphic as background.

The following options can be chosen:

[Show default page](#)

The known startpage with the button visualization, editor and system is displayed.

[Open visualization in an extra window](#)

The visualization is started directly in a new window.

[Open visualization in the browser window](#)

The visualization is started directly in the browser window.

[Show userdefined page](#)

The background picture uploaded here is used as the startpage.

**Hint:** The standard side is within reach directly under this URL, independently of the attitudes met here:

<http://<eibPort>/bmxJava2/default.php>

For eibPort with a version < 0.6.9 you have to use the URLs start page <http://<eibPort>/bmxJava2/default.html>

## licence upload

The use of the HomeInformationCenters is bound to a licence. You get these at the acquisition of the HomeInformationCenters in the form of a file (file ending .dat). This licence file must be loaded into the eibPort.

## log table:

This table includes numeros log information. For example information about the dispatch of SMS.

Now you have to configure the following parameter.

Description	Enabled
System ID	<input checked="" type="checkbox"/>
SerialNumber	<input checked="" type="checkbox"/>
Group Address	<input checked="" type="checkbox"/>
Data	<input checked="" type="checkbox"/>
Telegram ID	<input checked="" type="checkbox"/>
Process ID	<input checked="" type="checkbox"/>
eibPort time	<input checked="" type="checkbox"/>
Last time	<input checked="" type="checkbox"/>
Source Type	<input checked="" type="checkbox"/>
Source Address	<input checked="" type="checkbox"/>

**Description** This is a description for this table. You can choose it on your own.

**Activate** Activate or deactivate this table.

**Type** Choose a tabletype : Status Table

**Name** Insert the name of the status table.

The table below shows which information will be stored into the database.

With the button „Generate SQL Statements“ you can generate the code to generate the SQL database. How to install a MySQL server is explained at the user guide of the Home Information Center.

## UDP- receiver

The Job IRTrans receiver is a job which receives UDP telegrams and sends dependent on these EIB telegrams.

The UDP telegrams must not send by the IRTrans, the telegrams can send by any another device, e.g. by a PC. In this way you can use the job IRTrans receiver as an universal UDP receiver, which can trigger EIB telegrams.

### UDP telegram

The UDP telegrams must correspond to the following syntax so that the eibPort of these can process.

**<Name of the remotecontrol>,<Name of the command>  
0d 0a**

The two dummies (name of the remotecontrol and name of the command) can be freely chosen character strings. The hex values "0d" and "0a" stands for return and line feed.

*Example: lightliving,toggle 0d 0a  
These telegram must be send to the IP of the eibPort on a chosen port.*

### job parameters

Into the mask of the IRTrans receiver you have to fill in the following parameters:

#### port number

The number of the port on which are the telegrams are send.

#### activate IRTrans broadcast

#### „RC“ name

Here you have to fill in the name of the remotecontrol (see UDP telegram).

#### Key code

Here you have to fill in the name of the command (see UDP telegram).

The other parameteres are the same as a *normal* IRTrans receiver job.

## Comparator

This job compares the value of a group address with that one of another group address or with a static value. Depending on the comparison condition different values can be sent.

### Input 1 and 2

These two inputs are compared with the comparing operation and according to the result one of the two outputs is sent (ture or false).

Both inputs have the following parameters:

#### group address

The value of this group address is put into entrance 1/2

#### EIS-type

Here becomes the EIS type of the group address selectly. The following EIS types are supported by the comparator:

- EIS 1 (switch, 1 bit)
- EIS 2 (1,4,8 bit)
- EIS 3 (time, 3 bytes)
- EIS 4 (date, 3 bytes)
- EIS 5 (Floating point, 16 bits)
- EIS 6 (Per cent, 0-100 %)
- EIS 8 (Priority, 2 bits)
- EIS 9 (Floating point, 32 bits)
- EIS 10 (16 bits)
- EIS 11 (32 bits)
- EIS 14 (8 bits)
- EIS 15 (14 bytes)

#### static

If this entry is active, then the value from the adjacent field is used for the comparison instead of the group address.

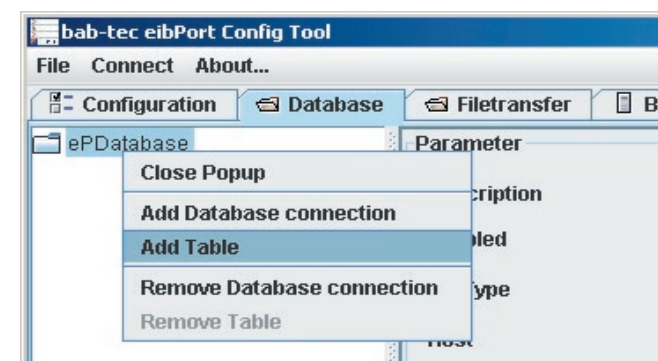
#### factor and offset

With these two parameters the value of the group address can be formatted.

Activate	Activate or deactivate this database connection.
Database type	At this point, eibPort only supports MySQL databases.
Host	Insert the IP address of the database server.
Port	Insert the port for database communication. For MySQL the default port is 3306.
Database	Insert the name for the database.
Username	Insert the username for access to the database. This user must have INSERT, UPDATE and DELETE rights.
Password	Insert the password for the user above.

After that, please save the configuration mask.

The Informations will write into tables of the database. The database can include three table typs. These are different by the information which writes the eibPort into these.



#### status table:

Table with the current conditions in the EIB. This table type is required for the Home Information Center.

#### telegram table:

All telegrams are written into this table.

To save the settings click on save.

### Save changes

To save new users and changes click on save users.

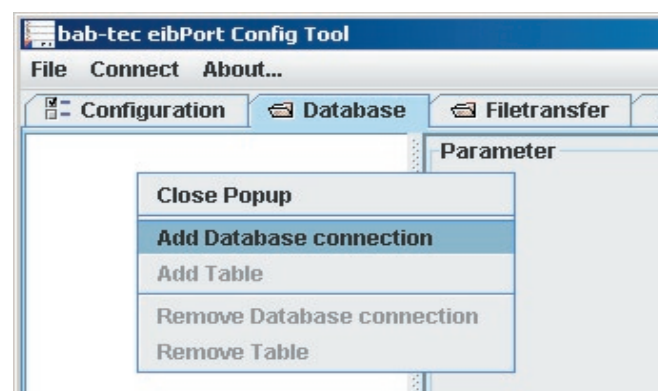
### Delete user

To delete a user right-click on a user name and choose delete from the context menu.

## Database

Information, like telegrams, status of group addresses and log information can write by the eibPort in a MySQL database. For the database communication you have to parameterize a database connection.

**With a rightclick you can add a new database connection.**



Now you have to configure the following parameter.

Description	This ist the description for the database connection. This is only for your orientation so you can choose it on your own.
-------------	---

**60**

## Comparing operation

Between the following comparing operation can be chosen:

„=“ same  
 „< >“ dissimilar  
 „>“ greater  
 „<“ less than  
 „>=“ greater/same  
 „<=“ less than/same

The comparing operation is carried out after every reception of one of the two input group addresses.

### output “untrue”

If the select comparing operation is not filled, this output is used.

### output “true”

If the select comparing operation is filled, this output is used.

Both outputs have the following parameters:

### Group address

This group address is assigned to the corresponding output.

If the corresponding output is active, then the group address is sent with the parametrized attitudes.

### EIS type

The output value is of the chosen EIS type.

### Static

The value in the adjacent field is used as output value.

### Non static output

The output does not have a static value. One of the following values is used as the output value:

- triggering telegram (entrance 1 or 2)
- last one telegram of entrance 1
- last one telegram of entrance 2

**45**

### Volatile

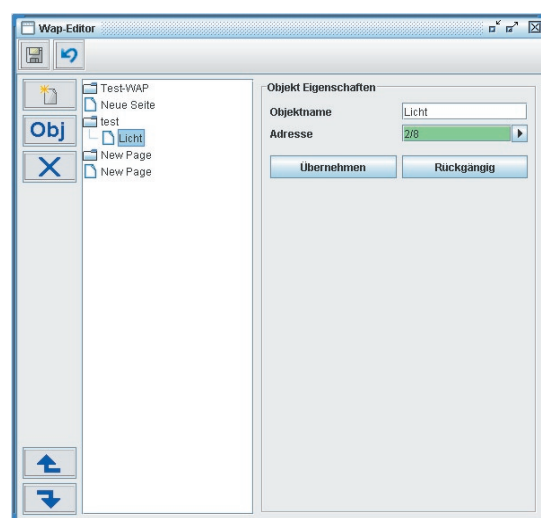
The value of the group address is not overwritten of telegrams of an external source (directly by the EIB).

### Changes

The output is sent only at changes of the value on the bus. If this entry is not active, the output value is sent after every renewed operation. The changes only refer to the value of the respective output object. If the output objekt static, the value does change. This attitude makes sense only at a dynamic output.



## WAP-Editor



You must enter the text to be displayed on the mobile phone as well as the group addresses which are to be switched (EIS 1). In the left column, the menu text is entered. For each menu item you can enter the member which is to be switched in the right hand column.

Please consult appendix 4 for initiating communication between the mobile phone and eibPort.

User	Description of the user
Username	User name for the login (is created when adding a user)
Password	Password for the user login
Repeat Password	repeat the password for confirmation
Change Password	If set, at each user login a new password has to be entered
Visible	If set, the user name will be shown in the list at the login screen.
Visualization editor	Only if set, the user can access the visualization editor. When accessing the username and password are requested.
User Administration	If set, the user can access the user administration of the configuration tool.

The following parameters define the access rights to the configuration areas. Click the checkboxes of the areas the user shall be allowed to access. The other areas will be hidden in the configuration tool.

Backup/Restore	Access to the backup/restore functions
eibPort control	Access to the reboot functions of eibPort
File transfer	Access to the picture and ESF file upload functions

In the area Configuration for each parameter category user levels can be set.

Invisible	the parameter category will be hidden
Level 1	Setup level; only parameters needed for the setup are shown.
Level 2	Standard level
Level 3	advanced access
Level 4	full access to all parameters

The mouseOver help indicates for each level the parameters that can be edited.

## Wake On LAN

This job can „wake up“ computers or other clients initiated by an EIB-Group-Adress.

### job parameters

#### Wildcard

If this entry is activated, the eibPort sends the command at **each** received input object (independent of trigger value).

#### trigger

The „trigger“ defines, on which command the job activates the client.

#### MAC-Adress

MAC-Adress of the client that should be activated

#### Transfer-Type

Default: UDP-Broadcast, choose UDP-Unicast, if you use a router

#### Broadcast IP

IP-Adress of the client (only for UDP-Unicast)

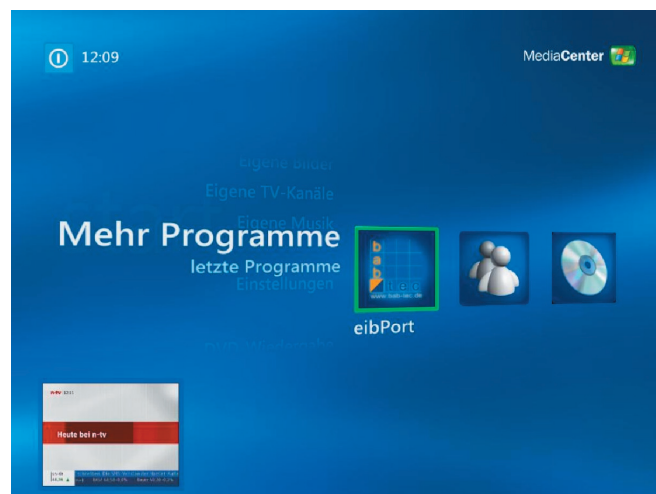
#### UDP Port

Wake On LAN Port, default: 40000

## Home Information Center Editor

The HIC is the integration of the eibPorts in the Windows Media Center. Now you can comfortably switch the light, change Temperatures, question on values or have a look at the camera picture of the network camera over the TV.

Please, read the user guide of the HIC for the configuration of it.



### Architecture of Home Information Center

The Home Information Center editor contains data sources. One contains all configured EIB objects and the other contains the information how the treestructure of the visualization will look.

#### Element

Each element has properties like group address and description and are grouped by categories for a better overview.

#### Treestructure

The treestructure represents the layout of the visualization. You can add your Elements in folders which may be defined by the structure of the building for example.

**48**

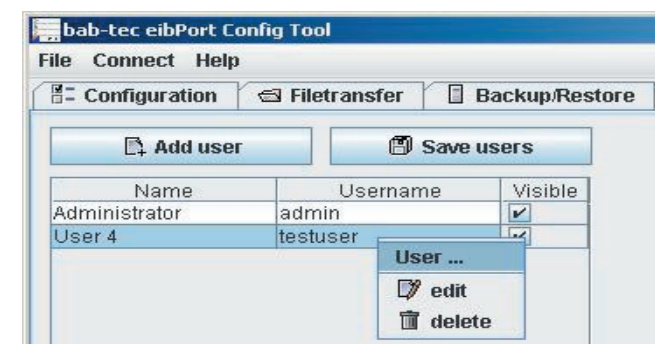
## User administration Configuration tool

The user administration of the configuration tool is independent from the user administration of the visualization editor. In the visualization editor user rights for the access to the visualization pages are assigned. In the configuration tool the user rights for the access to the configuration tool are assigned.

### Add user

Click on Add user and enter a user name. If the option visible is set the user name will be shown in the list at the login screen.

### Assign user rights



Right-click on a user name and choose edit from the context menu.

**57**

## Backup and Restore

The configuration files as well as all the jobs, visualization data and pictures can be stored and restored.

### Backup

Browse to the tag Backup/Restore and choose a backup mode from the menu:

Configfiles: Backup of the configuration files

All files: Backup of the configuration files plus Jobs plus visualization data plus pictures

To start the backup click on the button Start Backup. Enter a file name and click on Save.

### Restore

To restore backup files click on the button Choose file and select a backup file. Click on Start Restore.

#### Hint:

*After the restore the eibPort reboot, it takes a moment (1 or 2 minutes). During this action the eibPort isn't gettable.*

## eibPort Control

Coldstart: complete reset (corresponds to disconnecting the power supply)

Warmstart: reset of the EIB kernel

LED Test: Test of the signal LEDs

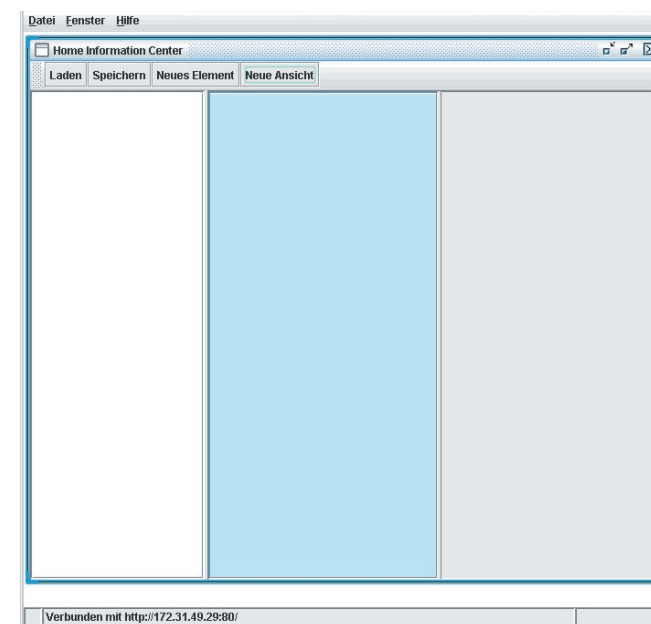
BCU Reset: Reset of the BCU

## Home Information Center Editor

To start the Home Information Center editor, open the eibPort with your browser and click on „Editor“. When the editor has started, choose „Home Information Center“ from the menu „Window“.

If you have never created a HIC visualization a message will popup, that no project has been found.

You can use the context menu to add new elements and drag&drop to move them into the treestructure or change the treestructure.



The editor window is divided into the following parts:

#### Menubar

Element overview	left column
Treestructure for visualization	center column
Parameters	right column

#### Menubar

The Menubar contains buttons for the following actions:

Load                      The project will be loaded from the eibPort.

- |             |  |
|-------------|--|
| Save        | Saves the whole project into the eibPort.  |
| New element | Gives a selection of the available element types and creates a new element from the chosen type. |

### Element Overview

In the element overview all configured elements are grouped by its type. You can add them either using the menu bar or the context menu by rightclicking the element overview.

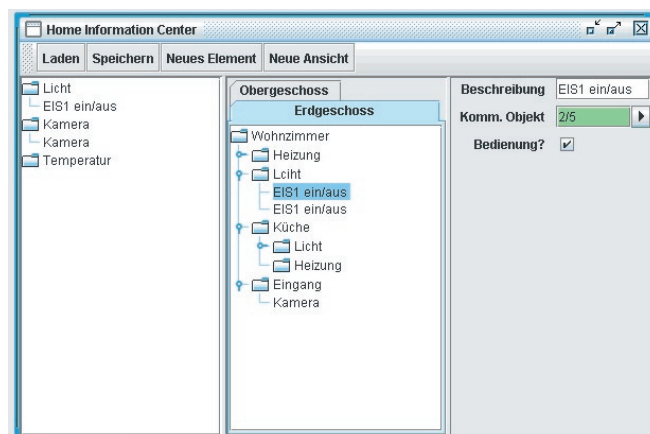
### Treestructure

In this part of the editor contains the folders and references to the elements. It is the structure that will be displayed in the visualization.

New folders can be added using the context menu (rightclick). The folders, elements and references can be placed by drag&drop. By dragging an element from the element overview into the treestructure you will create a reference to this element. If you change any property from the element, the reference will have this property, too.

### Parameter

Here all properties for the selected elements are listed.



### ISDN facilitie coupling

For the facility coupling via ISDN are some settings necessary. This settings you can administred here.

### eMail

For the sending of emails you have to add an email provider. We have already add two provider for testing.

## File Transfer

Pictures and grafics, eib components as well as ESF files can be uploaded to the eibPort.

### Picture upload

Pictures and grafics can be uploaded here. The formats JPEG, BMP, TIFF, PNG are supported. To upload a file browse to the tag File Transfer. Click on Choose file and select a picture file. Enter a description in the field Description and click on Start upload. The progress will be indicated in the status bar. In the overview list all uploaded pictures and grafics are listed. To refresh the list click on the button. Refresh list.

### eibPort components upload

Here the files of freely defineable switches are uploaded. Freely defineable switches are created with the extra software button creator. To upload a file browse to the tag File Transfer. Click on Choose file and select a file. Enter a description in the field Description and click on Start upload. The progress will be indicated in the status bar. In the overview list all uploaded freely defineable switches files are listed. To refresh the list click on the button. Refresh list.

### ESF file upload

To simplify the assignment of group addresses in the editors the data from ETS projects can be loaded. In the address table then all group addresses of the ETS project with descriptions will appear. Consider the ETS help for information about exporting ETS data into ESF files. To upload an ESF file browse to the tag File Transfer. Click on Choose file and select a file.

## network settings

### use DHCP

If „use DHCP“ is activated, the following 4 parameters (IP address, subnetmask,...) are not used. The eibPort gets this parameters from the DHCP server in the network. After changing this settings the eibPort will boot, it takes a moment.

### DNS server

If you using a DNS server at your network, you can enter the IP address of the server. For e-mail you have to enter the IP address of the DNS server of your Internet provider.

### time server

The eibPort can used as EIB clock. The eibPort can connet a NTP server (Network Time Protocol) and update his own clock. The time can be send by the time / date sender to every EIB device.

For the function you have to enter the IP address or name of one NTP server. It is better if you use two or three different servers.

public NTP server:

- Physikalische Technische Bundesanstalt

**ptbtime2.ptb.de**

-Technische Uni Berlin

**ntp1-0.cs.tu-berlin.de**

-Uni Erlangen

**ntp0.fau.de**

Please note that the eibPort need for this function a connction to the internet.

The eibPort tries ones a day to concet him with the NTP server and update this clock. Failed the try, the eibPort tries it in a defined time interval again.

### EIB telegram recorder filter rules

Here you can define rules / filter for the EIB group recorder.

## Available Elements

### EIS 1 on/off

This element displays the status of an EIS1 device and can send the a new status if „control“ is enabled.

### EIS 5 Temperatur

This element displays the current and desired temperatur of a temperatur sensor. If control is enabled, you can change the desired temperature with the configured stepwidth.

### EIS 5 value floating point

Displays EIS5 values. If you have control enabled you have to configure stepsize, maximum and minimum value.

### EIS 6 value 0-100%

Displays EIS6 values. If you have control enabled you have to configure stepsize, maximum and minimum value.

### EIS14 value 0-255

Displays EIS14 values. If you have control enabled you have to configure stepsize, maximum and minimum value.

### Camera

Displays an image of a network camera. You have to configure the correct URL to the image.

## System

Allows the configuration of basic- and various other parameters pertaining to telephone systems, network routing, passwords and so on.

### String and passwords

The access to the System are protected by a String and username/ password. The username and passwords can be changed in the system editor. The default passwords are the following:

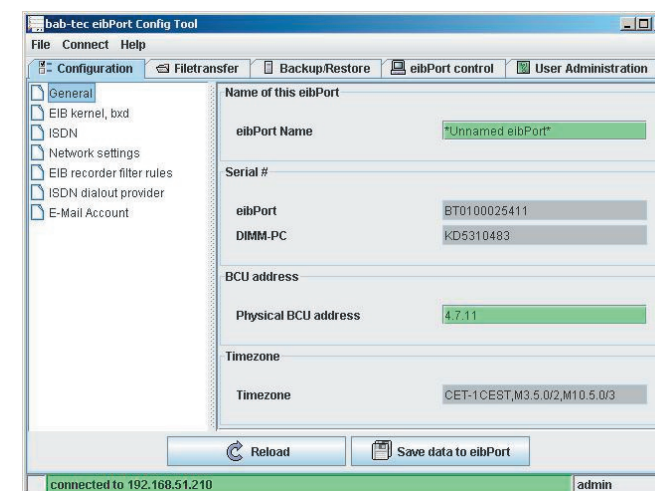
**username: admin**  
**password: eibPort**

To change a password, the new password has to be entered twice in the user administration of the system editor. If you fill in nothing, no password is required.

Access to the pages of the visualization can be done under the user administration in the visualization editor.

## ConfigTool

The administration of the eibPort setting and parameters happens without the ETS. All settings are done by the ConfigTool of the eibPort, file upload, networksettings, ISDN settings, backup, ...



## Configuration

In the left panel there are the parameter categories. Click on a category to show the parameters in the right panel. The number of the available parameters depends on the user rights. The online help supports at the configuration. Point on an parameter name to show the help.

### general

Here you can make the basic settings like IP address, physical address, name of the eibPort,...

### advanced EIB settings

Here you can make the advanced settings.

### ISDN settings

Here you can make the basic settings for the communication over ISDN. This settings include incoming and outgoing MSN, dial-in password,...

**Hint:** You have to enter the incoming and outgoing MSN without prefix.