



FIAVis

The ultimate visualization solution for EIB systems



Highlights

- Visualization of systems with 500/unlimited number of process items: each EIBSPS and EIBWeiche comes with a free 500 license of FIAVis!
- Visualization over network, number of network clients is not limited
- Simulation mode for testing functionality without attached bus systems
- Automation of systems with timings, regulations, scenes... free graphically programmable Soft-SPS/Soft-PLC is included
- Integrated value logging
- Integrated router (exchange of values between different EIB worlds)
- Included OPCServer
- Included ActiveX interface
- Included WEB interface (MS IIS needed)
- Included visualization designer with unlimited runtimes
- Supports EIBWeiche, EIBSPS, Siemens/ABB IP Router (optional), OPC Servers to other bus systems (optional)

Overview

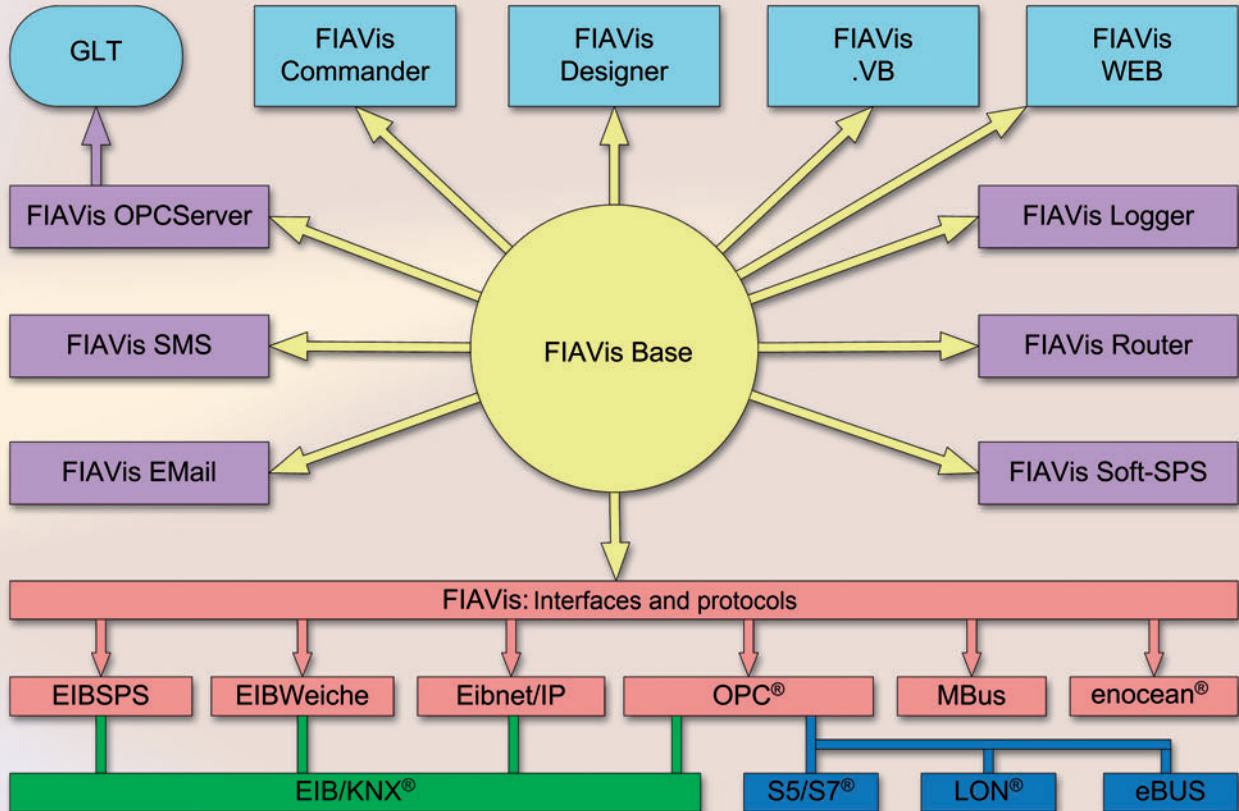
FIAVis is a new visualization solution which is included in (but not limited to) our EIBWeiche and EIB-SPS packages. FIAVis has a central data pool which is running as a Windows Service (2000/XP/Vista x86), this data pool holds all current values of all parametrized addresses from the connected bus systems.

External applications (visualization/GLT systems) can access this data pool by the included OPCServer / ActiveX / WEB interfaces, but of course FIAVis comes also with its own visualization software, the FIAVis Commander. You can create as many Commander runtime projects as you like, with no additional license fees, so for example you can easily create individual panels for each user in a big building, each panel can connect to the central data pool by LAN.

The central data pool can also act as a value monitor (storing values into database files for statistics), as a router (to connect two different worlds), and as a soft-PLC (Soft-SPS) to execute programmable logic functions/time functions. Beside the EIBWeiche and EIBSPS the data pool also supports Siemens/ABB IP Router as an EIB connection (optional, need a special license) and even completely different bus systems can be connected to the data pool, using the OPC interface (also an optional license is required).

FIAVIS Base

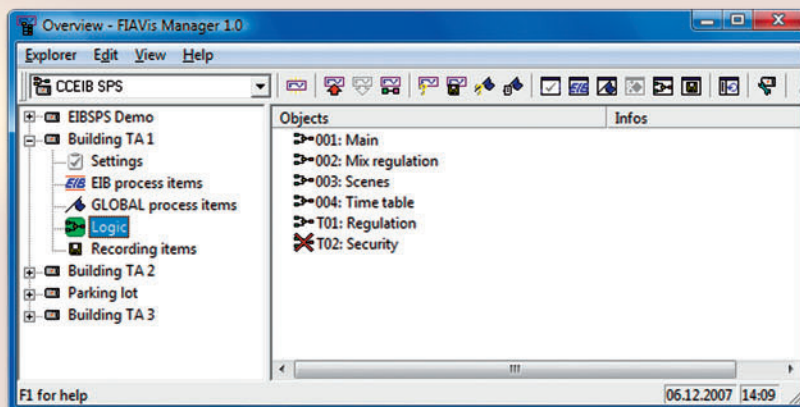
The central data pool of FIAVIS is a real Windows service (MS Windows NT4, MS Windows 2000, MS Windows XP, MS Vista X86), which works without the requirement of a logged-in Windows user. It directly supports the following EIB access methods: EIBSPS, EIBNET/IP network router, EIBWeiche serial and EIBWeiche USB (EIBWeiche USB only with MS Windows2000, -XP, Vista X86). Additionally the OPCClient functionality allows access to arbitrary other bus systems and data sources. Even the concurrent administration of multiple EIB plants is possible.



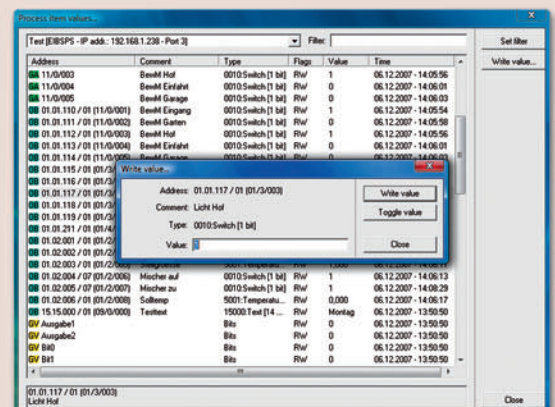
The FIAVIS Base data pool service provides an internal Soft-PLC, a logging module, routing functionality, and a simulation mode (for creating and testing your projects without actual bus access). Client-PCs are able to access the data pool by network, without local bus connection, you can use/administrate/parametrize the data pool by a remote connection.

FIAVIS Manager

The FIAVIS Manager is the parametrization tool for FIAVIS Base. It is used to define the process items of the data pool (address import from ETS2 and ETS3 is integrated), and for creating logics for the Soft-PLC. Here you also manage the logging and routing functionality, and the way of the bus access. Furthermore FIAVIS Manager contains status indicators of FIAVIS Base (incl. the current license information), and windows to display/write the

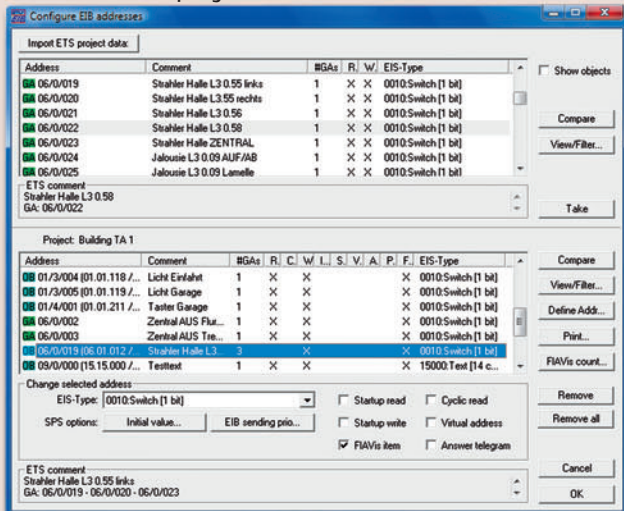


FIAVIS Manager

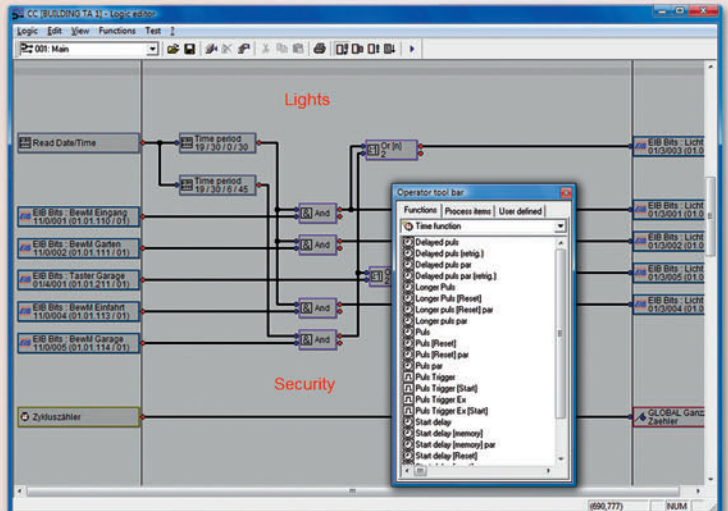


Quick Access to process items

current process item values (fast access to the process items without the need of creating a complete visualization). The FIAVis Manager is able to import older EIB Explorer projects, so you can use your existing EIBSPS and Control Panel projects with FIAVis as well.



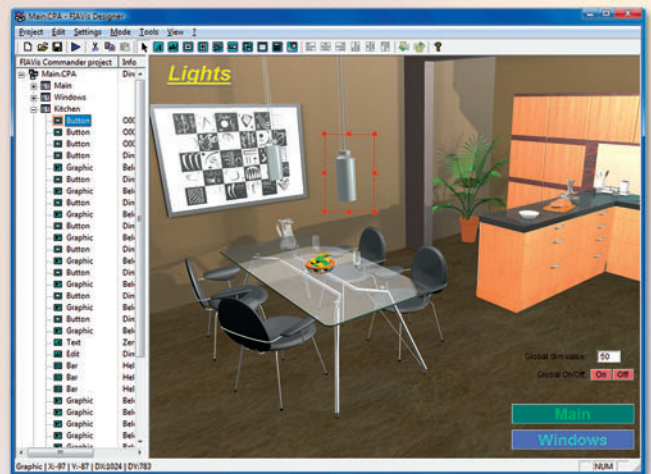
Import EIB Addresses



Logic editor

FIAVis Commander / Designer / Web

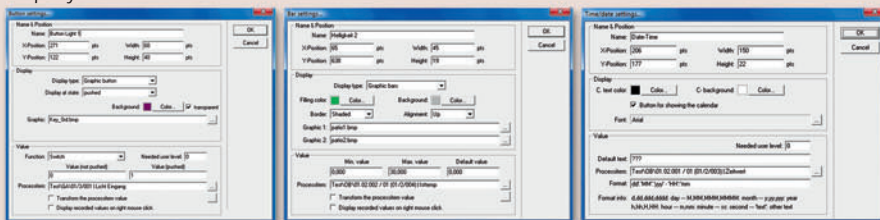
This is the visualization software of the FIAVis package. The visualization GUI gets created with the fully graphical Designer software, which automatically creates the runtime executable (the FIAVis Commander). The runtime directory is just to be copied to the target computer and can be used immediately. Of course you can create as many runtimes as you like, each project can contain arbitrary display pages and control elements. The following display/control elements are available: Text fields, input fields, switches, pushbuttons, scrollbars, bar line displays, graphic fields, page changers, time tables, html views (including web cams) and calendars. These have many adjustment possibilities (arbitrary colors, character fonts, graphic images (available formats are BMP, JPG, GIF, WMF, TIF, PCX – transparency is possible with all formats). Process item values may be scaled/mapped before they are displayed. The internal user management lets you define users with special privileges. External applications can be launched by pressing a button received process item value, e.g. start of outlook with a button, or start of an SMS-application when an alarm message arrives.



FIAVis Designer

And as an highlight you can turn your Commander project into Webserver HTML/AJAX pages by a simple mouse click, the Microsoft IIS Web Server can be used to host the project for an unlimited number of clients. Additionally it is possible to import existing EIB Control Panel projects into a FIAVis Commander project, all EIBCP functions remain unchanged.

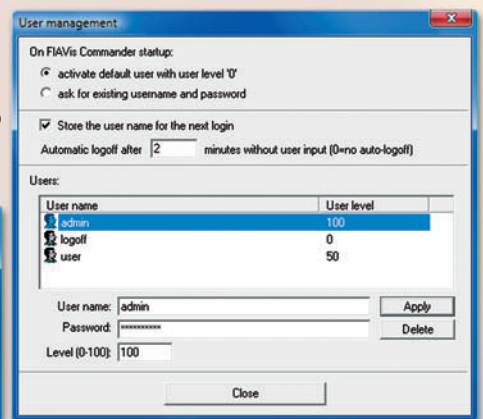
Property windows



Button settings

Bar settings

Time/date settings



User manager

FIAVIS OPCServer / FIAVIS.VB

External OPC clients (visualizations/BMS) are able to access the FIAVIS Base data pool using the provided FIAVIS OPCServer. There are no additional parametrization efforts needed, all FIAVIS Base process items are automatically available via OPC.

For those OPCclients lacking a „browse“ function it is possible to create a textfile containing all OPCServer process item names, which allows creating the process items within the client.

FIAVIS.VB is an ActiveX interface for usage within own programs respectively in programs supporting ActiveX (e.g. MS-Excel, MS-Access, VB, DotNet). This interface allows easy read/write access to the process items. There are no additional parametrization efforts needed, all FIAVIS Base process items are automatically available the .VB module. Contained are commands to read and write process items, furthermore you can install an event handler which is called upon value changes.

Tag	Info	Value	Time
Test\GA\11/0/1	BewM Eingang	1	12/06/07 14:44:24
Test\GA\11/0/2	BewM Garten	0	12/06/07 14:44:24
Test\GA\11/0/3	BewM Hof	1	12/06/07 14:44:24
Test\GA\11/0/4	BewM Einfahrt	0	12/06/07 14:44:24
Test\GA\11/0/5	BewM Garage	0	12/06/07 14:44:24
Test\OB\1.1.110/1	BewM Eingang	1	12/06/07 14:44:24
Test\OB\1.1.111/1	BewM Garten	0	12/06/07 14:44:24
Test\OB\1.1.112/1	BewM Hof	1	12/06/07 14:44:24
Test\OB\1.1.113/1	BewM Einfahrt	0	12/06/07 14:44:24
Test\OB\1.1.114/1	BewM Garage	0	12/06/07 14:44:24
Test\OB\1.1.115/1	Licht Eingang	0	12/06/07 14:44:24
Test\OB\1.1.116/1	Licht Garten	1	12/06/07 14:44:24
Test\OB\1.1.117/1	Licht Hof	1	12/06/07 14:44:24
Test\OB\1.1.118/1	Licht Einfahrt	0	12/06/07 14:44:24
Test\OB\1.1.119/1	Licht Garage	1	12/06/07 14:44:24
Test\OB\1.1.211/1	Taster Garage	1	12/06/07 14:44:24
Test\OB\1.2.1/1	Zeitwert	33.000000	12/06/07 14:44:24
Test\OB\1.2.2/1	Isttemp	12.300000	12/06/07 14:44:24
Test\OB\1.2.3/1	Stellgrosse	1.000000	12/06/07 14:44:24
Test\OB\1.2.4/7	Mischer auf	1	12/06/07 14:44:24
Test\OB\1.2.5/7	Mischer zu	1	12/06/07 14:45:17
Test\OB\1.2.6/1	Solltemp	0.000000	12/06/07 14:44:24
Test\OB\15.15.0/1	Montag	Montag	12/06/07 14:44:24
Test\GV\Ausgabe1		0	12/06/07 14:44:24
Test\GV\Ausgabe2		0	12/06/07 14:44:24
Test\GV\Ausgabe3		0	12/06/07 14:44:24

FIAVIS OPCServer

```

' Write four values on Button press
' =====
Private Sub ButtonWrite_Click()
    Dim strConn As String, strType As String, strAddr As String, strValue As String
    If fConnected = False Then Exit Sub
    For i = 5 To 8 Step 1
        strConn = Worksheets(1).Cells(i, 1).Value
        strType = Worksheets(1).Cells(i, 2).Value
        strAddr = Worksheets(1).Cells(i, 3).Value
        strValue = Worksheets(1).Cells(i, 4).Value
        FIAVIS.Value(strConn, strType, strAddr) = strValue
    Next i
End Sub
' =====
' Event handler, automatically called when a
' new value arrives
' =====
Private Sub FIAVIS_NewValue(ByVal strConn As String, ByVal strType As String, ByVal strValue As String)
    For i = 5 To 8 Step 1
        ' check, if we want to know this value
    Next i
End Sub
    
```

FIAVIS.VB example code

- | | |
|--------------------------------------|--|
| FIAVIS.Connect() | Activates the connection to the data pool |
| FIAVIS.Disconnect() | Closes the connection to the data pool |
| Status=FIAVIS.ConnectionState | Returns informations about the current connection |
| FIAVIS.Value("process item")="value" | Writes a value to a process item |
| value=FIAVIS.Value("process item") | Reads a process item value from the data pool |
| Event FIAVIS.NewValue(address,value) | Optional event handler, will be called on value change |

Contents of delivery

- The complete FIAVIS software is included on our EIBTools CD which comes with all of our EIB products. Even without an EIB-SPS/EIBWeiche device you can install and evaluate the software.
- Each EIB-SPS and all non-REG EIBWeiche devices have a free „500 process items“ license included
- The optional licenses (unlimited process items, IP Router support, OPC-Client) come with an USB hardlock dongle to activate the complying functionality
- Documentation

b+b Automations- und Steuerungstechnik GmbH

Klingenbergweg 17 · 64385 Reichelsheim · Tel. 0(049) 6164/912 057 · Fax 0(049) 6164/912 058
 www.bb-steuerungstechnik.de · E-mail: info@bb-steuerungstechnik.de