



KNX® Quadra®

Weather controller

Product description

Weather controller for measuring and sending weather data to the KNX network and for controlling sun protection systems.

Security advices

- Electrical connection and startup operations shall only be done by electrically skilled persons.
- For installation, assemblage, operating and accident prevention please comply to the regional regulations.
- Connection and maintenance operation might only be done in not energized condition.
- If safe operation is not possible, the device must not be started up or has to be disabled.
- The device shall only be applied for normal use and according to the specified technical data.

Installation instruction

- The mast tubes are connected to each other by means of a metric fine pitch thread M22x1. **To avoid damages the assembly shall always be done without any tools!** (hand tight fastening is enough!)
- DO NOT mount at a corner of a house.
- DO NOT mount below roof overhangs.
- DO NOT mount next to cell towers.
- For wall-mounting use mounting bracket.
- Avoid shading by surrounding buildings/objects.

Configuration

- Configuration by ETS version 3.0f or higher of the KNX Association. Detailed information about configuration possibilities and functionality can be found via the „Help“-button inside the ETS-application.
- By pushing the programming button (P), the programming mode is switched on and off. The programming LED (L) shows the mode. When the LED cannot be switched on, the bus voltage is missing. The physical address can only be programmed when the LED is switched on.

Start-up

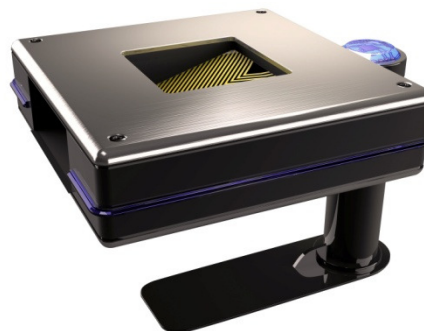
- Check device, clamps and connections.
- Switch on the power supply and the bus voltage and check the LED states.
- Remove protective foils; apply specific labels (physical address), if necessary; update the technical documentation.
- Consider the alignment and update the system documentation.

Advices Status-LED (L)

- Fast flashing (< 1 s): no bus voltage or no application loaded.
- Flashing periodically (1 s): device is ready-to-operate.

Accessories

- Order No. 0503001.001 Power supply PS 24-1500
- Order No. 0120001.001 Mast extension approx. 35 cm



Technical Data

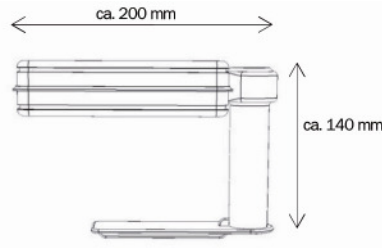
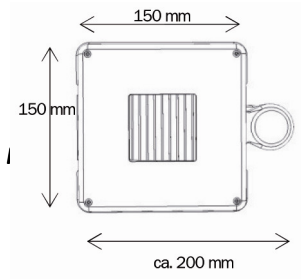


Connections	Voltage	21 – 28 V DC
	Power	2,5 W (without heating)
	Heat-current (controlled)	max. 1,3A
	Cable	2 x 2 x 0,25 mm ²
	Type of protection	IP X4
	Bus connection	KNX
Sensors	Bus current	max. 25 mA
	Temperature	-40 °C to +90 °C
	Brightness	0 to 100 kLux
	Global radiation	0 to 1200 W/m ²
	Wind speed	0 to 35 m/s
	Wind direction	0 to 360 °
Environment	Precipitation	yes / no
	Operation environment	outdoor installation
	Operation temperature	-30 °C to +60 °C
	Storage temperature	-30 °C to +75 °C
General	Dimensions	157 x 198 x 132 mm (LxWxH)
	Weight	approx. 900 g

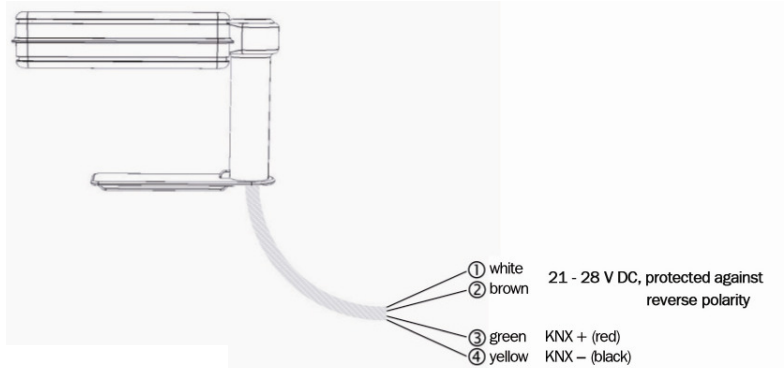
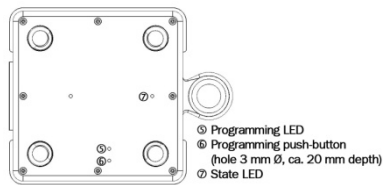
The weather controller shall be maintained at least twice a year. A maintenance includes at least cleaning and visual control.

Technical Data Sheet

Dimensions

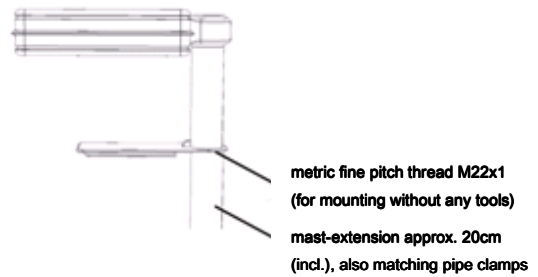
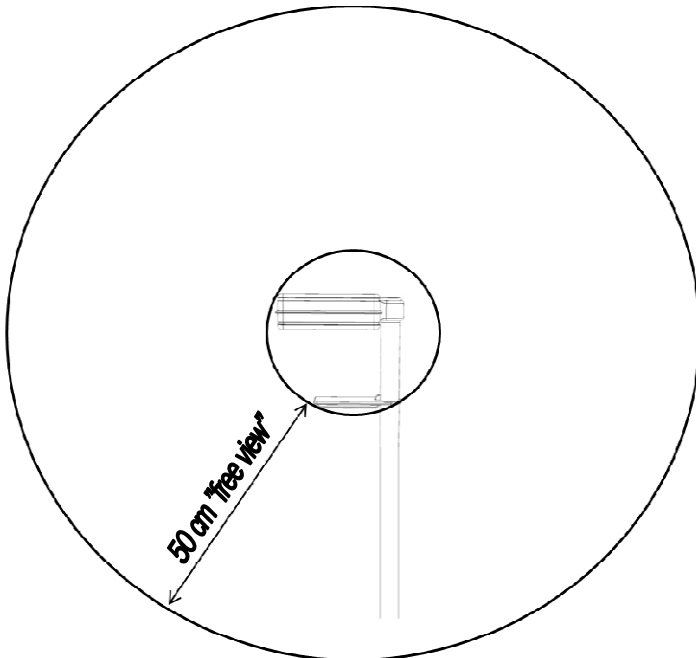


Connection plan



Colour code according to DIN 47100

Installation



To avoid errors in the ultrasonic measurement (wind, temperature) caused by reflections, there must not be any objects within a range of 0,5m to the Quadra weather controller.