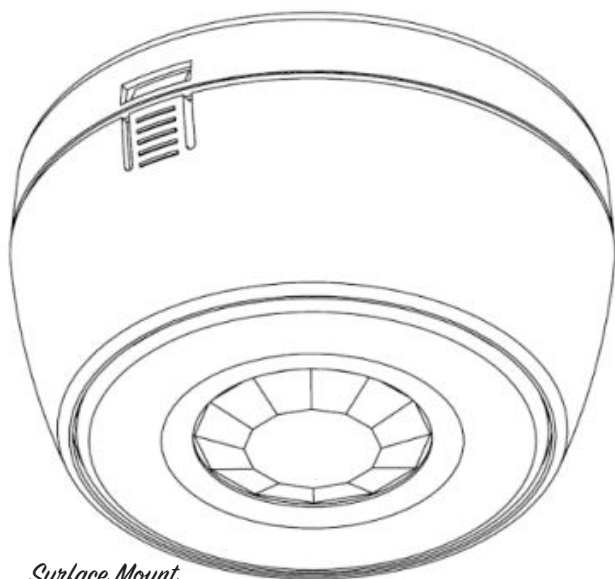


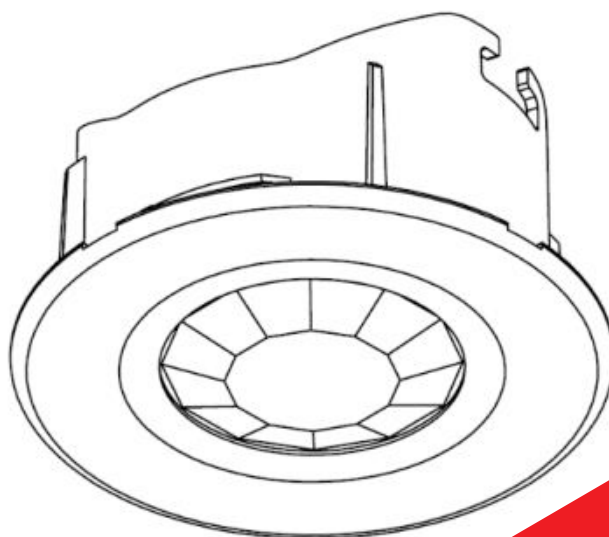
# Datasheet DALI XD100 (PD100, MD100)

## **EAE DALI Presence/Motion Detector**

*All you need is EAE*



*Surface Mount*



*Flush Mount*

## General Features

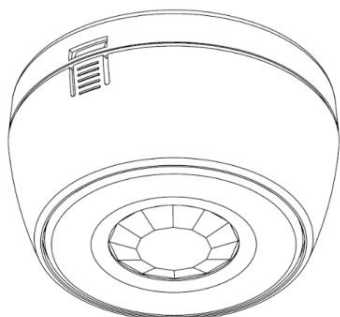


Figure 1: XD100 Surface Mount

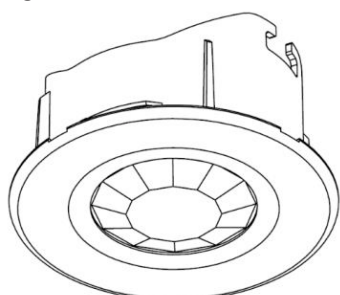


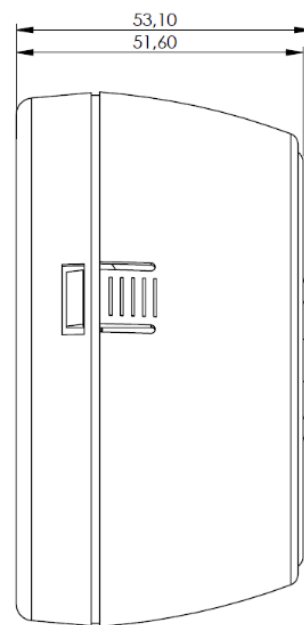
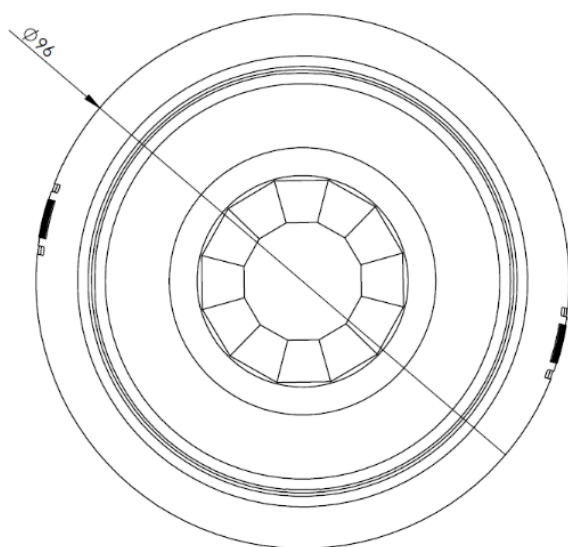
Figure 2: XD100 Flush Mount

- XD100 DALI Presence Detector is ideal for interior rooms such as medium to large-size offices, corridors, classrooms, conference and meeting rooms, parking buildings, warehouses and sport halls.
- Available in two models
  - PD100 Presence Detector (suitable for precise presence detection)
  - MD100 Motion Detector (suitable for wide range movement detection)
- Available in flush mounted and surface mounted versions
- Measures the ambient brightness between 10 – 1000 lux
- Reports presence and brightness data via DALI-2 commands
- Device does not require an additional power supply.
- Test and calibration mode allow for easy installation.
- Compatible with relative DALI-2 standards
  - Control device (IEC 62386-103)
  - Presence sensor (IEC 62386-303)
  - Brightness sensor (IEC 62386-304)

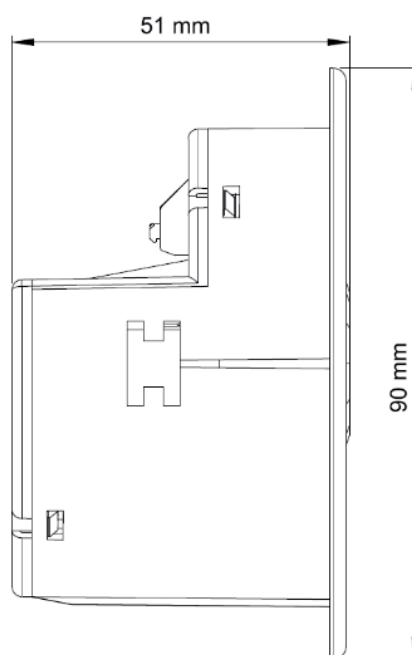
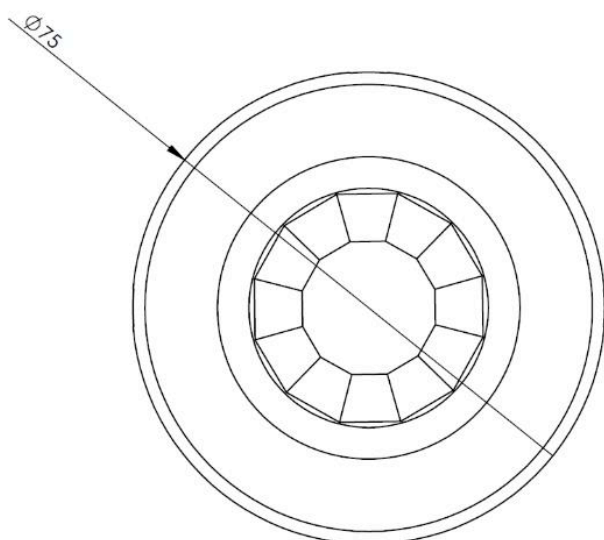
## Technical Data

<b>Protection Grade</b>	IP 20	EN 60 529
<b>Safety Class</b>	II	EN 61 140
<b>Power Supply</b>	Voltage	12V... 22V DC, DALI line
	Current consumption	< 7 mA
<b>Connections</b>	DALI	Terminal Connection
<b>Installation</b>	Location	Ceiling
	Recommended height	2,5m – 5m
<b>Temperature Range</b>	Ambient	-5° C + 45° C
	Storage	-25° C + 55° C
	Transport	-25° C + 70° C
<b>Dimensions</b>	Flush mount	Dia: 75 mm Height: 38.4 mm
	Surface mount	Dia: 96 mm Height: 51.6 mm
<b>Weight</b>	0.06 kg	
<b>Material</b>	Plastic, polycarbonate, colour white	
<b>CE</b>	In accordance with the EMC guideline and low voltage	
<b>Application Area</b>	Interior rooms	
<b>Sensor Type</b>	Passive infrared	
<b>Detection</b>	Diameter (at height of 2,5m)	9m movement detection (MD100) 6m movement detection (PD100)
	Area	64 m2
	Angle	360°
	Light level	10 – 1000 lux

## Technical Drawings



Drawing 1: XD100 Surface Mount



Drawing 2: XD100 Flush Mount