

eISSOUND



i500 Multiroom Audio System



USER'S MANUAL

1.- Quick Reference Guide for Remote Control Unit Operation	3
Recommendations to achieve enhanced communication between the Remote Control Unit and the Main Speaker	4
2.- Link Remote Control Units and Main Speakers	5
3.- Operating the Background Music	7
3.1.- Basic Controls	7
3.2.- Equalization and timer	7
3.3.- FM tuners	8
3.4.- CD/DVD-audio Player	9
3.5.- iPod	10
3.6.- L1 and L2 external sound inputs	11
3.7.- In-Room sound input	12
3.8.- "Ideal" function	13
3.9.- General standby for the entire system	14
3.10.- Standby for Auxiliary Speaker	14
4.- Clock functions	15
4.1.- Clock-calendar	16
4.2.- Alarms	16
4.3.- Auto-standby	16
5.- Intercom	17
5.1.- Intercom call-response operation mode	17
5.2.- Electronic baby monitor	18
5.3.- Intercom settings	19
6.- Display settings	20
FAQ's Frequently Asked Questions	20

iPod is trademark of Apple Inc. registered in the U.S. and other countries

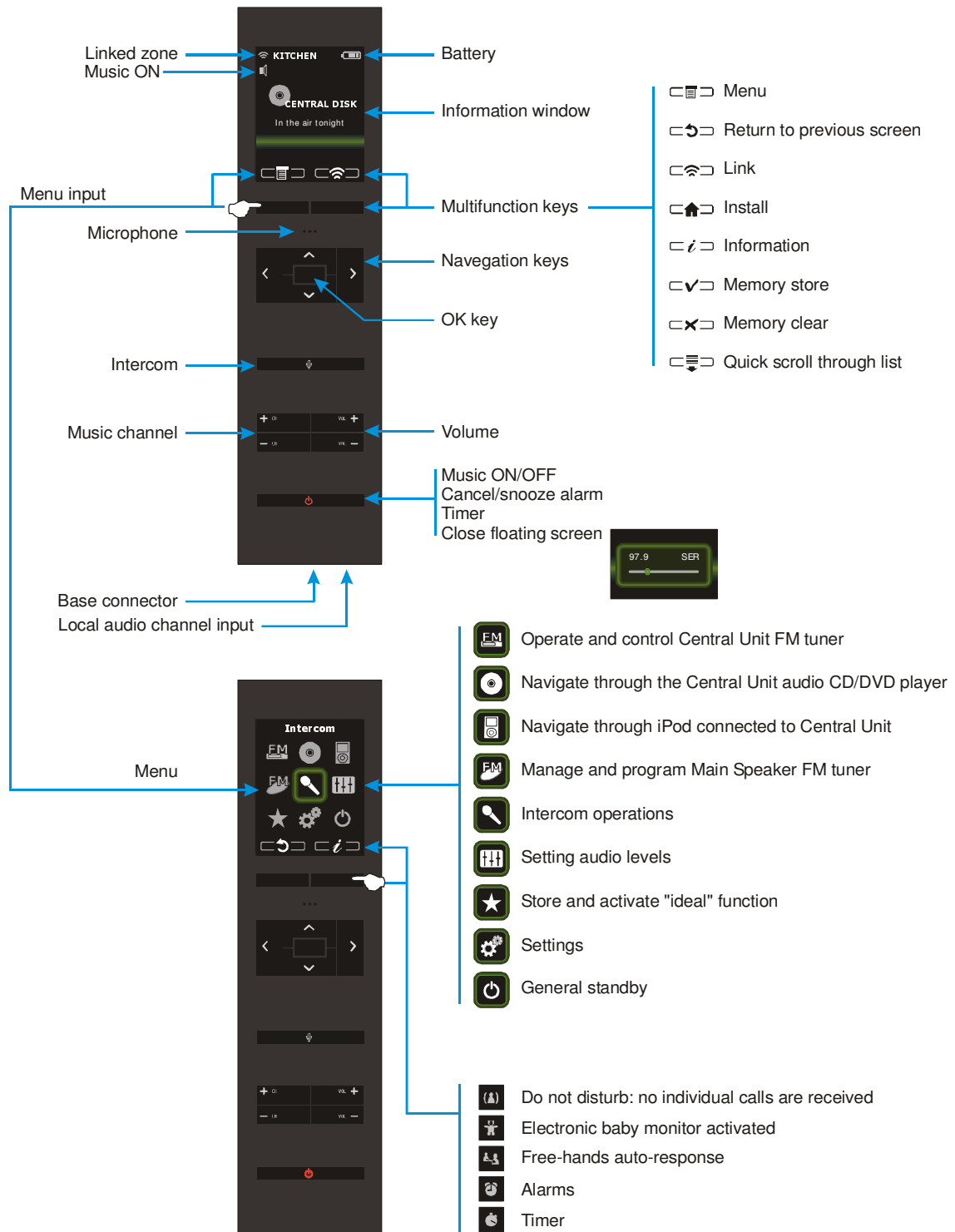
"Made for iPod" means that an electronic accessory has been designed to connect specifically to iPod and has been certified by Electrónica Integral de Sonido S.A. to meet Apple performance standards.

Apple is not responsible for the operation of this device or its compliance with safety and regulatory standards

Electrónica Integral de Sonido S.A. is not responsible for any error or omissions that may appear in this manual, and reserves the right to make changes without prior notice.

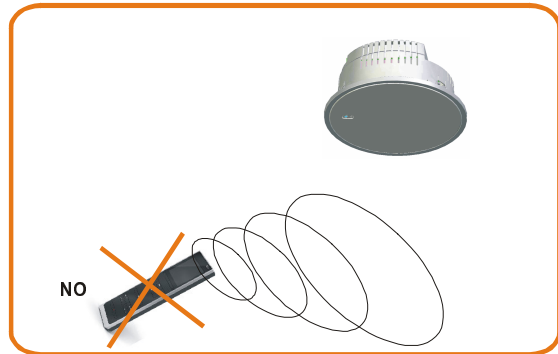
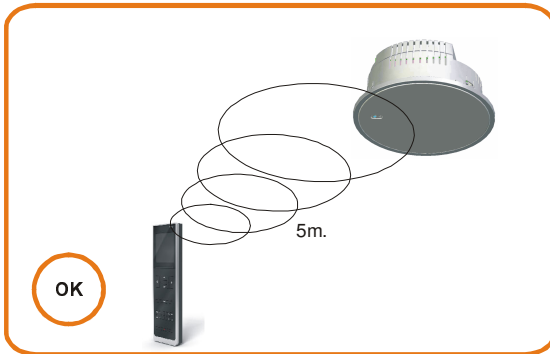
1. Quick Reference Guide for Remote Control Unit Operation

To assure a correct system operation, Installer Manual indications must be followed. Also, every Remote Control must be linked with its Main Speaker.

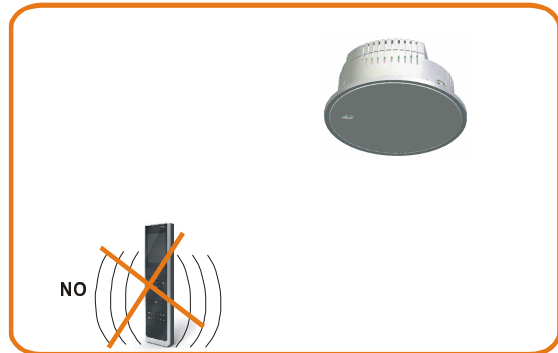
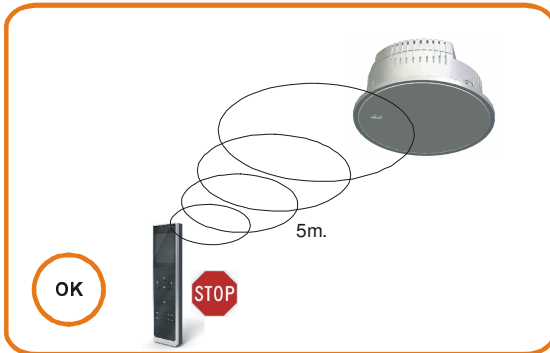


Recommendations to achieve enhanced communication between the Remote Control Unit and the Main Speaker

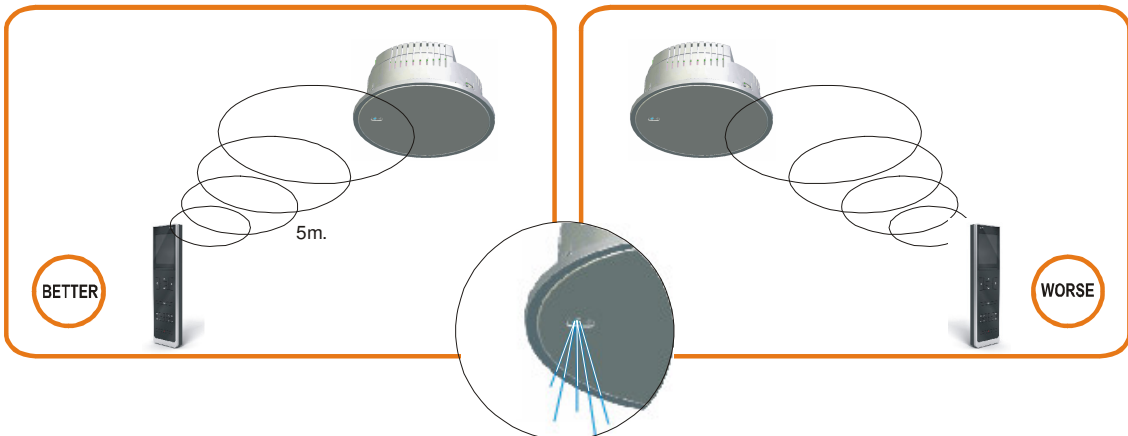
1 Operate the Remote Control Unit in a vertical position

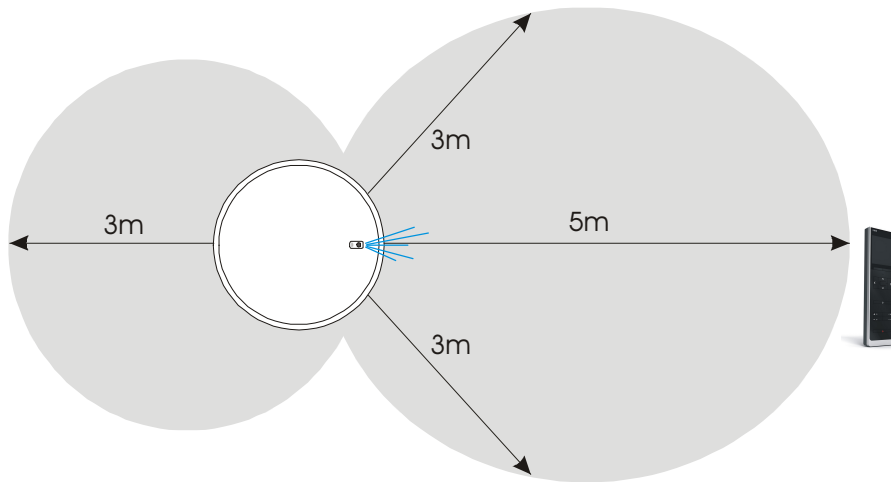


2 Do not move while operating the Remote Control Unit.





3 Main Speaker coverage is better on the LED side: preferably aim the Remote Control Unit towards that zone and avoid operating from the sides.






4 Avoid nearby devices that emit Bluetooth, Wi-Fi or any other radiofrequency that transmits at 2.4 GHz.



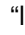
IMPORTANT: When the Remote Control loses communication with its linked Speaker, the  symbol disappears along with the name of the zone. In this case the Remote Control will attempt to re-establish the link until it is established. To facilitate this operation, follow the above recommendations until the  symbol stops flashing.

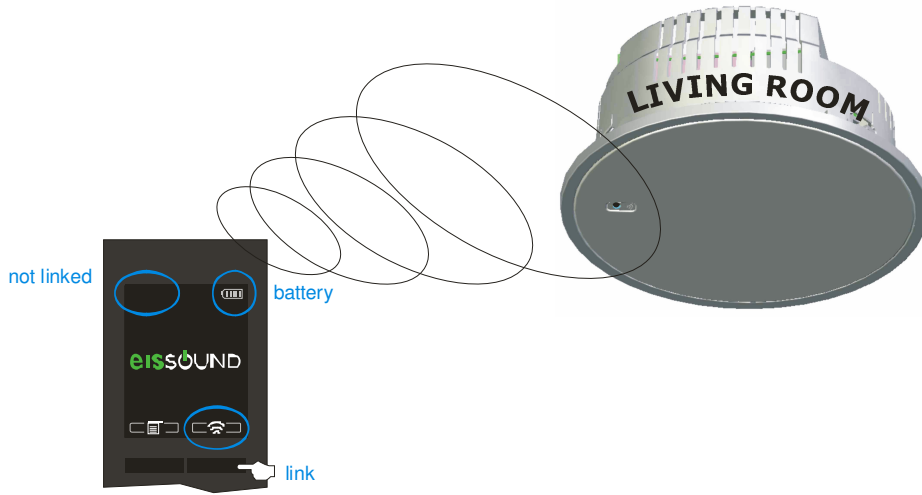
If the link cannot be established, press the “link” key  to break the link and proceed to retry with this (or another) Speaker by following the procedure in Chapter 2 of User Manual

2. Link Remote Control Units and Main Speakers



A Remote Control Unit must be linked with a SINGLE Main Speaker at all times. It is not possible to operate a Main Speaker by means of two Remotes simultaneously.



To link a Remote with a Main Speaker, press the “link” key  at the start-up screen and select the Main Speaker from the list that appears on the screen.



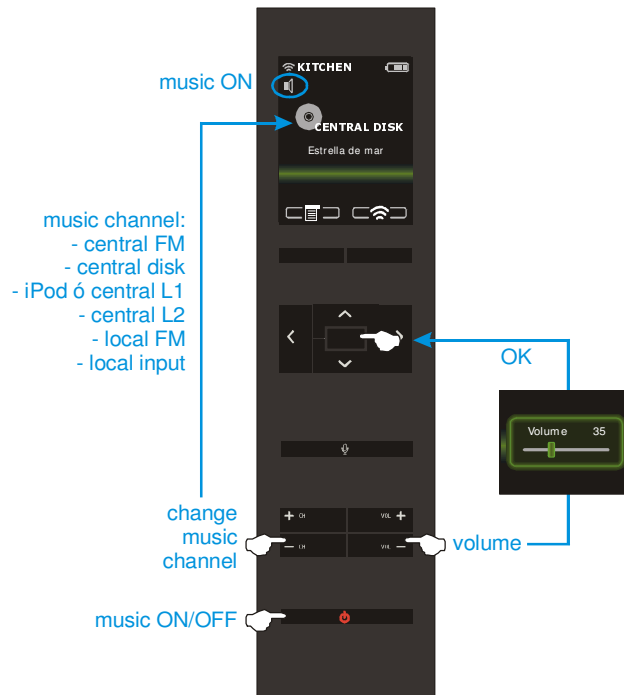
If the desired zone does not appear, it is outside the coverage area. Come closer to the Main Speaker which we want to link with (see Chapter 1, recommendations for optimal communication between Remote Control and Speaker).

The link may be conducted to manage different rooms with a single Remote Control Unit (although NOT SIMULTANEOUSLY). To this end the link must first be cleared by pressing the “link” key , after which the initial start-up screen is displayed. Next, press the “link” key  again and select the name of the Main Speaker from the menu list that appears on the screen.

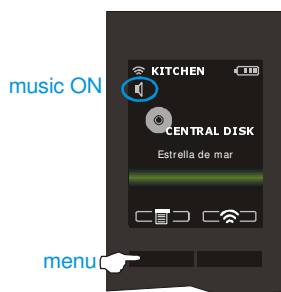


3. Operating the background music


3.1. Basic controls

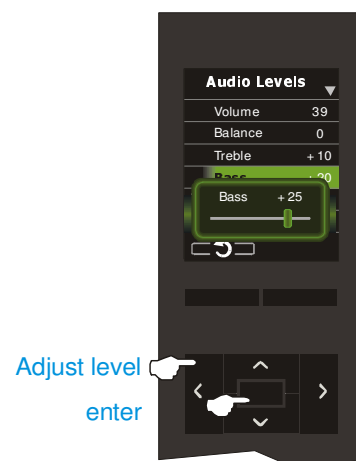
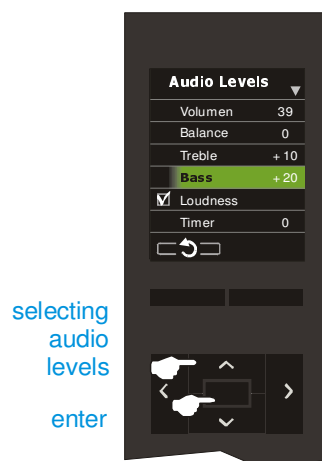
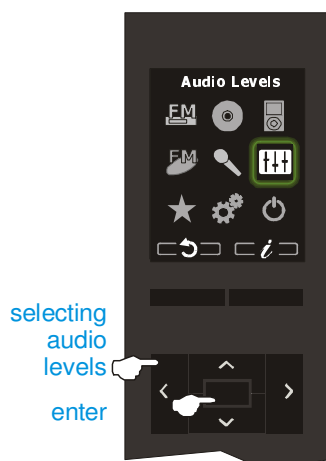


3.2. Equalization and timer



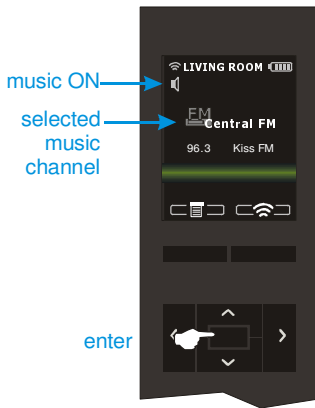
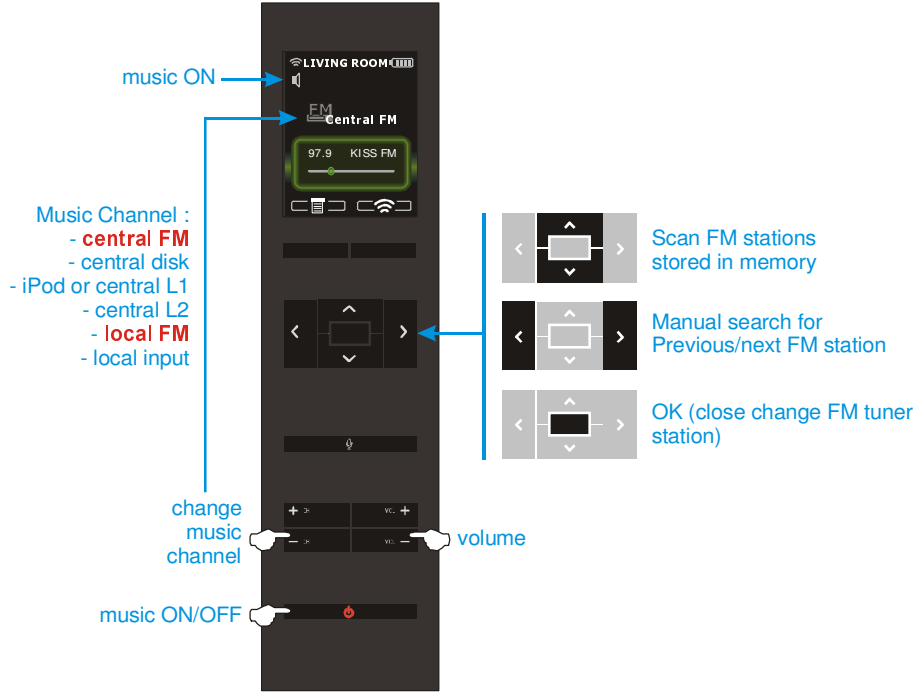
Select the audio levels menu for access to the levels of volume, bass, treble, balance, loudness activation/deactivation and activating the timer for automatic turn off the music after a certain programmed time.

Timer activation is available holding pressed "on/off" key  for 5 seconds.

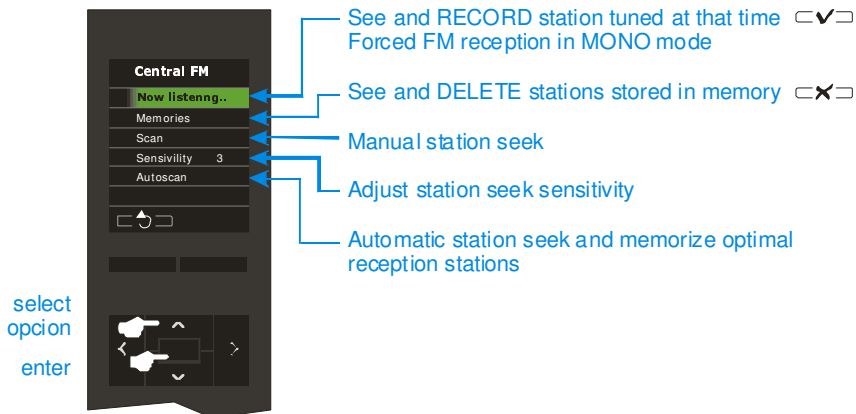


3.3. FM tuners

Two FM tuners may be selected from a Remote Control: the FM tuner on the Master Unit and the FM tuner on the Main Speaker.



To navigate advanced settings and program memories on either tuner, press the central navigation key ("enter").



If the reception quality is not satisfactory in stereo the "forced mono" mode can be selected. Store channel in memory with "forced mono" activated.

The "Autoscan" function is an automatic operation that deletes all the previously saved memory pre-sets. It then process to select stations received with the best reception, storing the stations in memory in order of dial frequency.

Because broadcast from the Master Unit FM tuner is distributed throughout the entire home, the FM station tuned in the Master Unit will be the listened in any room selecting the channel "Central FM "

3.4. CD/DVD-audio player

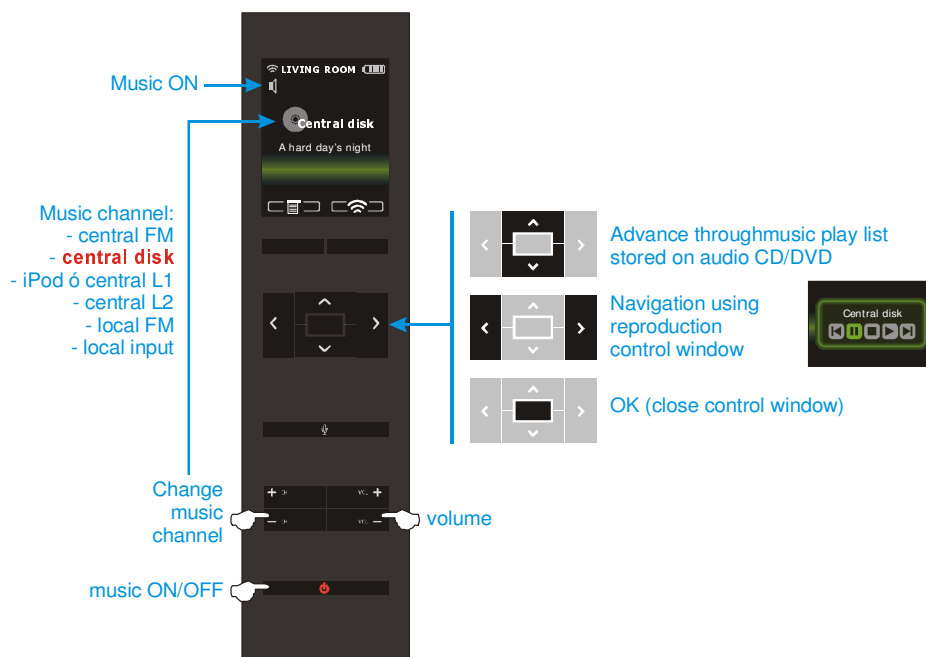
The Master Unit is equipped with a music and audio CD/DVD player with the ability to read audio CD, CD-MP3 and DVD-MP3 formats.



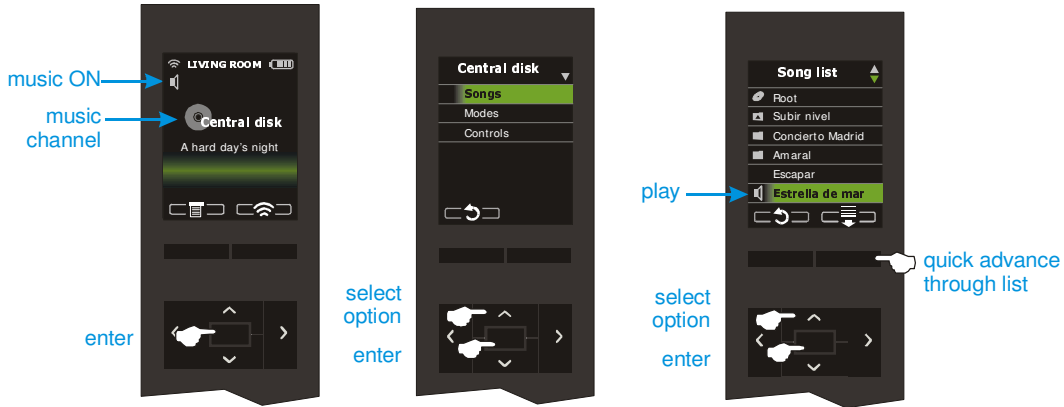
When a disc is inserted in the Master Unit, it reads and stores the data on the disc (song, artist, etc.) making it possible to access and move through the CD tracks from any Remote Control. To indicate that reading and storing is in progress (a maximum duration of 0.5 minutes for a CD and 3 minutes for a DVD) the frontal LED flashes. When the disc has been read and is ready to be played the LED stops flashing.

IMPORTANT: To ensure the proper operation of the device, close the tray using the "open/close" press button. CD-MP3 and DVD-MP3 discs must be burnt in closed session (not multisession supported) and must not contain any other files than MP3 ones

The player can be operated from the Remote Control in any room.



Navigation through stored music on a disc is similar to navigating through an MP3 player or an audio CD/DVD and uses the same system of directories and folders:

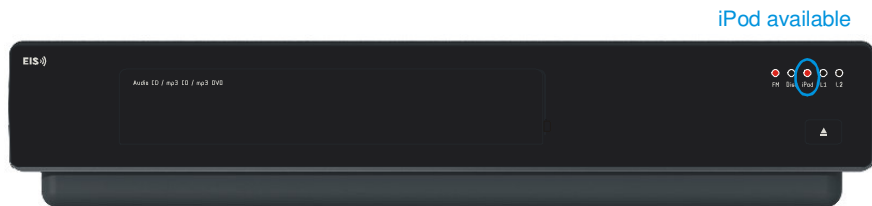


When selecting modes, it is possible to choose different random reproduction options such as disc or folder replay.

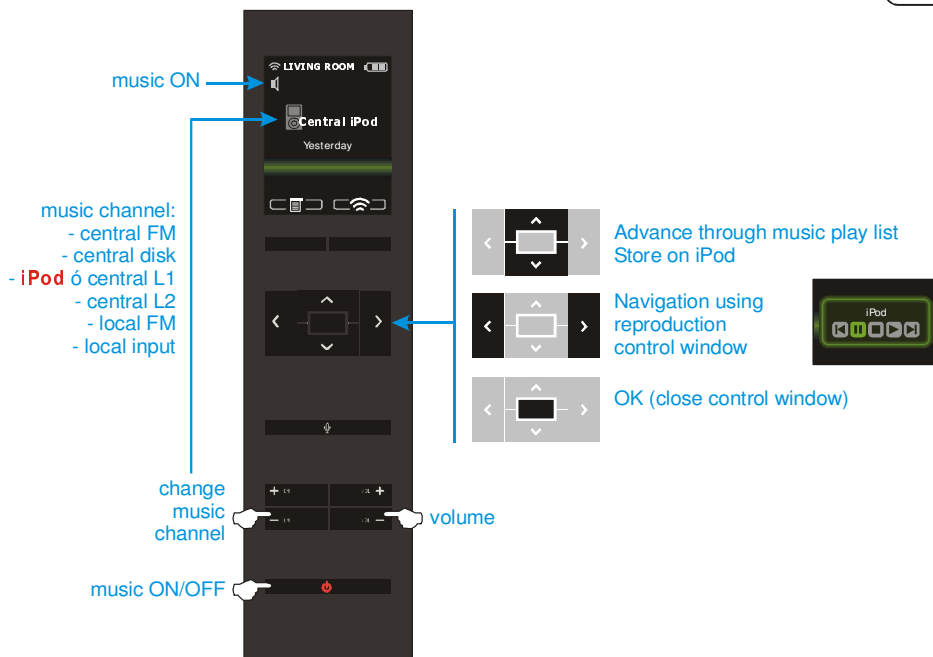
The music played on the Master Unit is distributed throughout the home's system. Therefore when a song is changed, the change will carry over to all rooms in the home which are tuned to the same channel.

3.5. iPod

When the Materl Unit has an iPod connection available the corresponding frontal LED will be lit.



Music stored on this iPod can be accessed from any Remote Control in any room.

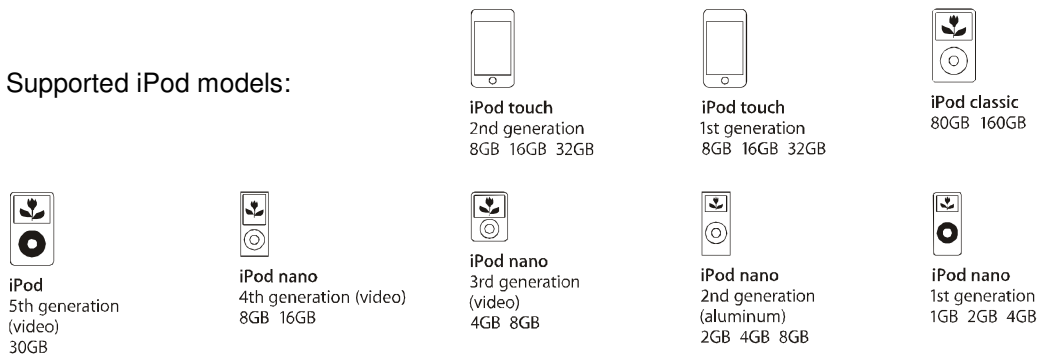


Navigation through music stored on the iPod is carried out the same way as on the iPod itself, using the same system of lists, albums and songs:



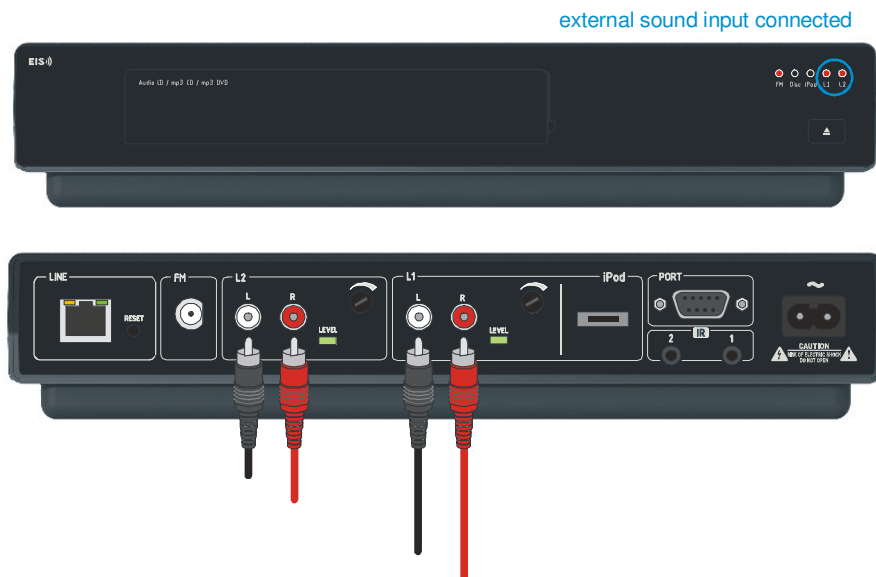
Because music stored on the iPod connected to the Master Unit is distributed throughout the entire home, any changes made to it will be carried over to all the rooms in the home tuned to the same channel.

Supported iPod models:



3.6. L1 and L2 external sound inputs

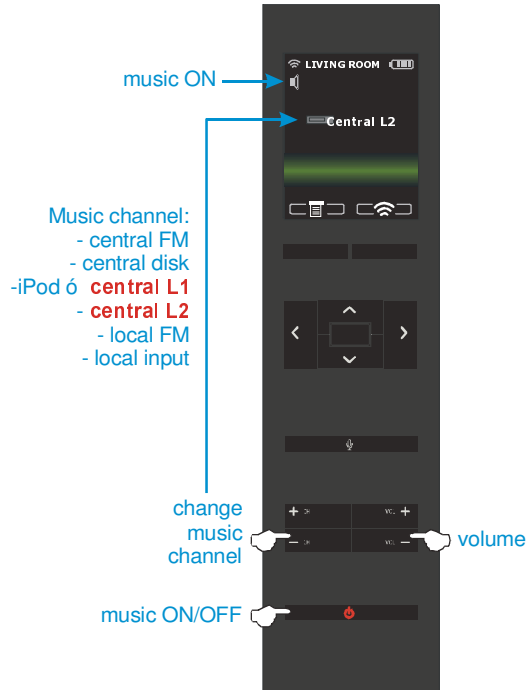
The Master Unit is equipped with two sound inputs, L1 and L2. Access the inputs through the RCA connectors located on the back panel.



External sound input L1 is shared with the iPod input and can thus only be active one at a time, the iPod having priority. This means that if both connections are being used, the iPod connection has priority. The external sound source connected to L1 will only be available when an iPod is not inserted in the Universal Dock for iPod

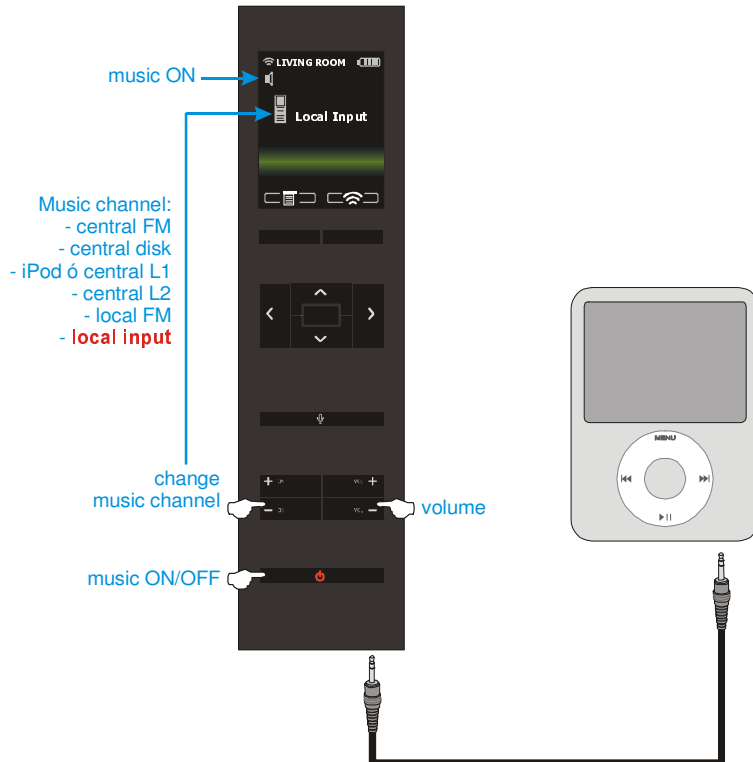
The available connections are indicated by the status of each corresponding frontal LED on the Master Unit.

The external sound sources can be selected from the Remote Control in any room.

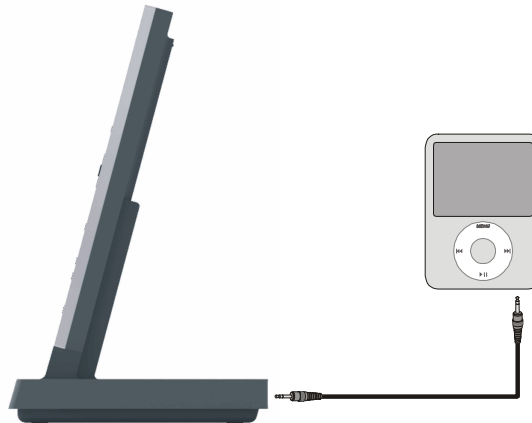


3.7. In-Room sound input

Each Remote Control Unit is equipped with a local sound input by means of a 3.5 mm jack. This allows for private listening in the zone or room with which the Main Speaker is linked.

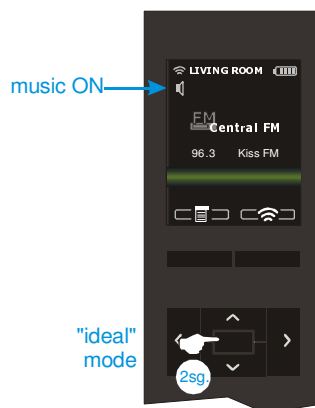


If use of this option will be used for an extended period of time it is recommended that the Remote Control be placed in the Base so as not to lose its battery charge. The connector for the sound input is located on the back of the base.

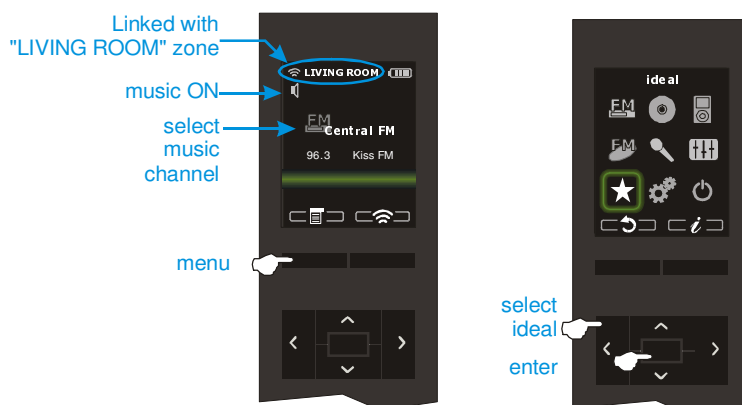


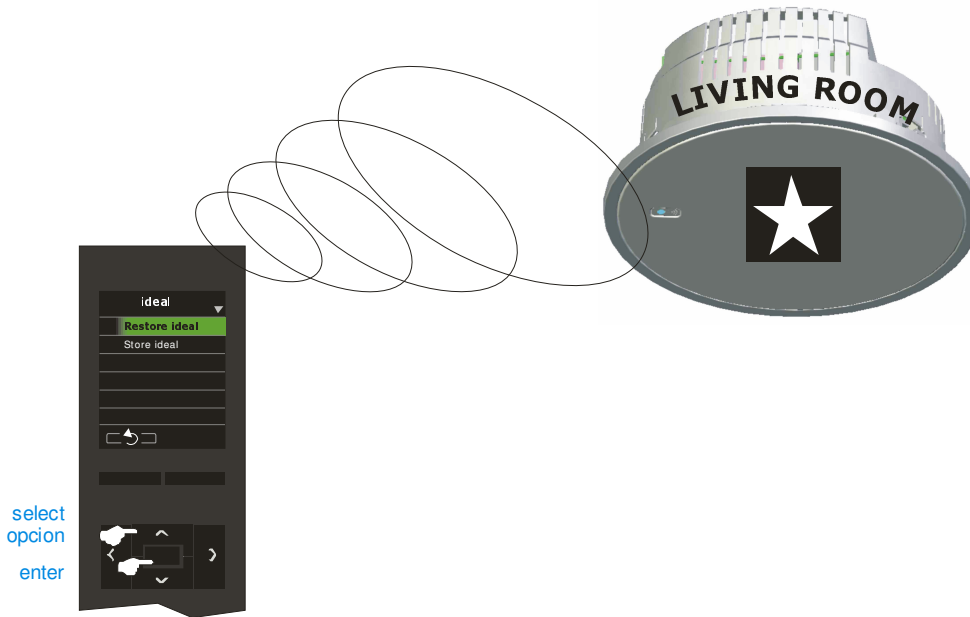
3.8. "Ideal" function

It is possible to save an "ideal" audio mode for each room. This is accomplished by setting specific pre-determined settings which can be activated at any time by pressing the "OK" key for 2 seconds.



The available settings to be stored in "ideal" mode are levels of volume, balance, bass, treble, loudness, audio channel and FM tuner station (if the audio channel is an FM tuner). To save as "ideal" mode, proceed as follows:






3.9. General standby for the entire system

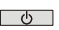
It is possible to switch off the music throughout the entire house without having to go room to room.

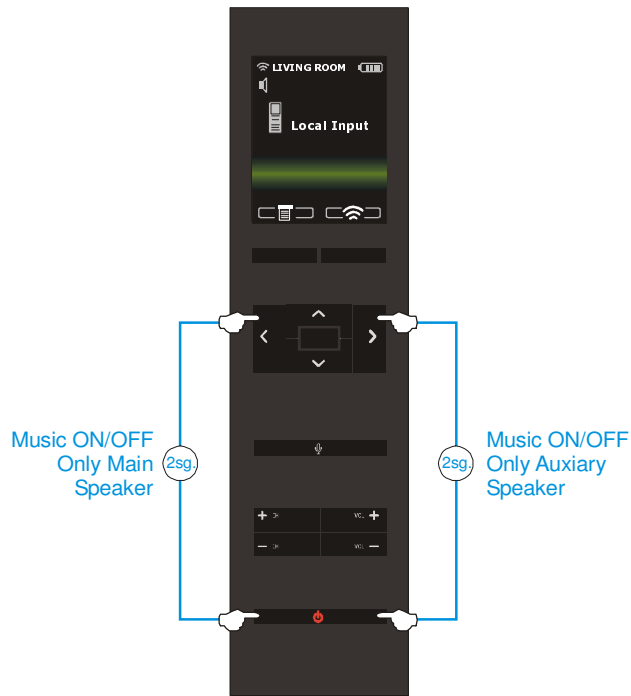


3.10. Standby of Auxiliary Speaker

In zones or rooms with Auxiliary Speakers (see Installation Manual, section 4.2.) the standby function activates and deactivates music in the Main Speaker and all the Auxiliary Speaker.

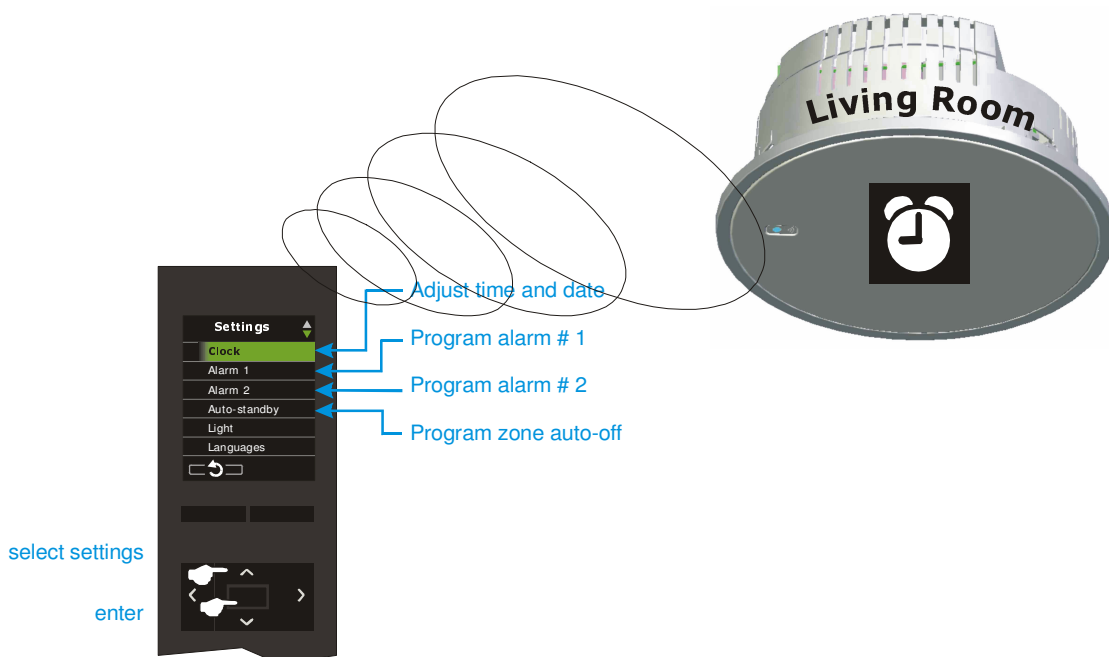
To ONLY activate the music in the Main Speaker and its Passive Speaker, press the “on/off” key  and the “left” for 2 seconds.

To ONLY activate the music in the Auxiliary Speaker and their Passive Speakers, press the “on/off”  and “right” keys for 2 seconds (the Auxiliary Speaker cannot be activated/deactivated independently from one another).



4. Clock functions

The clock functions are linked with each Main Speaker and are operated and adjusted on the settings Menu from the Remote Control linked with it at the time.

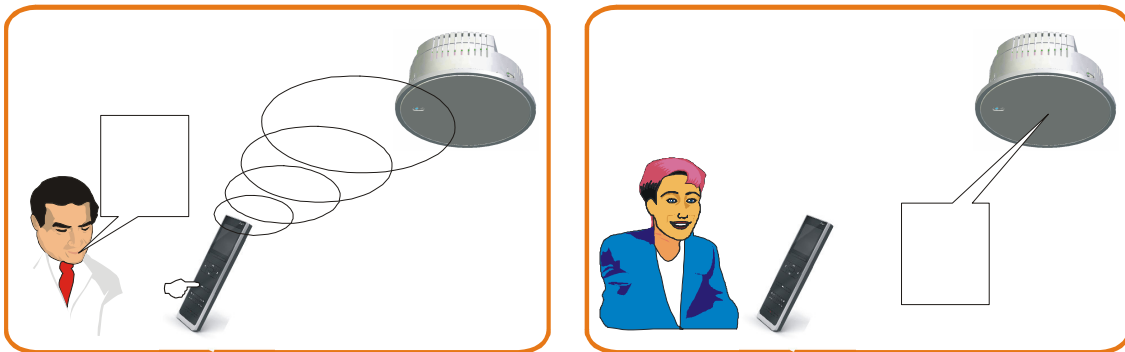


5. Intercom

IMPORTANT: For the correct and orderly operation of the intercom functions it is assumed that each zone or room has its own Remote Control linked with its Main Speaker.

5.1. Intercom call-response operation mode


Each Remote Control is equipped with a built-in microphone which allows intercom calls to be made to different zones within the system. These calls are heard on all the speakers installed in the zone(s) the communication is addressed to.



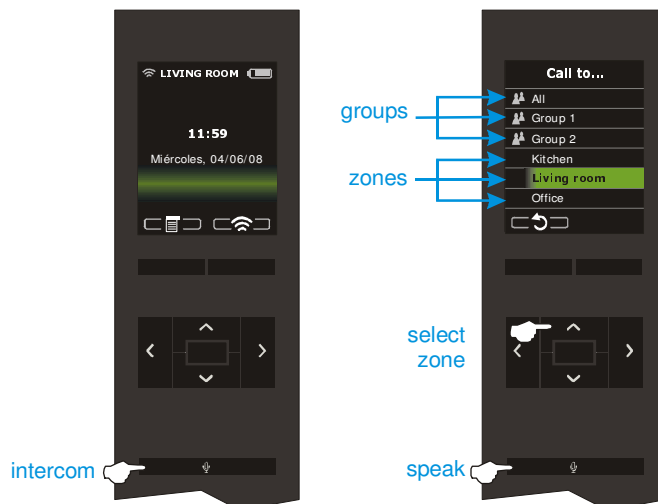
Here's what to do:

Press the "intercom" key 

Select the zone from the list


Keep the "intercom" key  pressed while the spoken communication is being transmitted

At the destination location the message will be heard through the loudspeakers (maximum time 1 minute). If the destination zone is a group of zones, the message will be heard simultaneously at all destinations.



The volume of the received intercom can be adjusted by program (see 5.3.). It can also be adjusted at the time of receipt by simply pressing the volume keys as the intercom call is received. When the communication has concluded the most recent setting will be stored in memory.

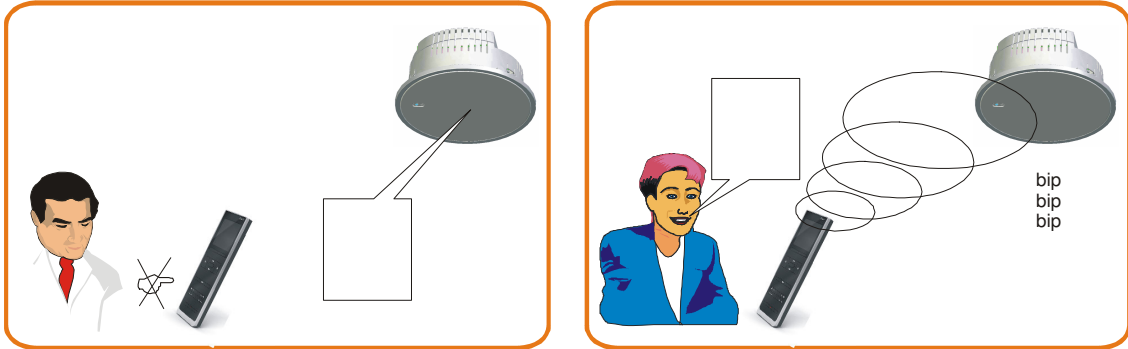
If a zone is DO NOT DISTURB mode intercom calls will not be received.

When the "intercom" key  is released the mode becomes hands-free auto-response.

The person who had initiated the conversation is now listening to the response from the person being addressed.



The zone that had received the intercom call opens his or her microphone while at the same time the speakers generate the typical “beep” sound to indicate that the microphone is capturing the sound generated in that room (this avoids any inadvertent listening). The auto-response feature is active as long as the voice detector does not detect silence for a period greater than the time defined in the setting.

This mode is active while the person continues to speak (maximum time: 1 minute). The auto-response sensitivity and silence time are programmable parameters (see 5.3.).



If the AUTO-RESPONSE feature is deactivated in a zone, hands-free auto-response will not be activated after receiving an intercom call.

The auto-response feature  is not available for intercom calls to groups of zones

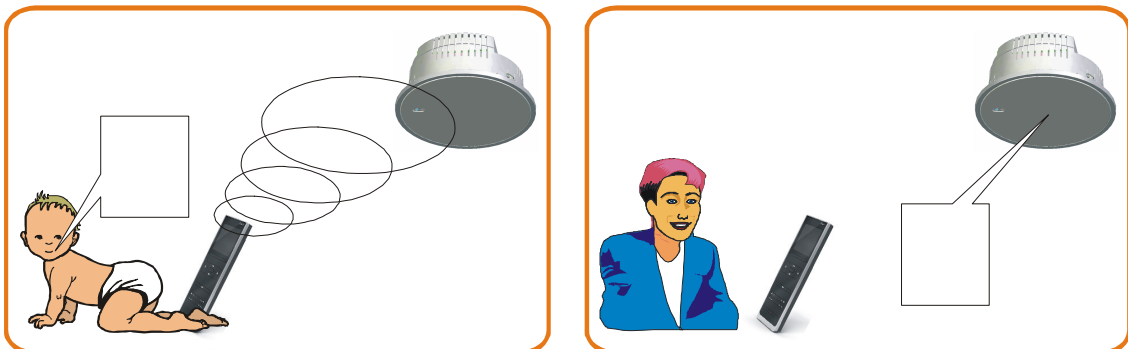
At any time either of the two speakers can request permission to speak by pressing the “intercom” key  or end the communication by pressing the “on/off” key .

In any event, the maximum duration of an intercom operation (call + response) is 3 minutes.

If communication is addressed to a group that does not exist or to a location where the control units do not have permission to receive calls a message to that effect will appear on the screen. If the call takes place it means that at least one zone in the selected group has received the corresponding message.

5.2. Electronic baby monitor


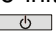
The electronic baby monitor is an intercom call operation that is automatically generated when the Remote Control built-in microphone detects sound in the room. This feature was designed for care-giving purposes of persons who cannot access the Control Unit keypad in the event they wish to communicate through the Control Unit (a child, a handicapped person, a senior citizen, for example).



This function is programmed in the zone or room where the monitoring takes place. There can be several areas or rooms with the baby monitor feature activated. (see 5.3.).

When sound is detected in the room there is no need for any intervention on the Remote Control keypad. The Unit transmits an intercom call that stays open as long as the silence period programmed does not elapse.

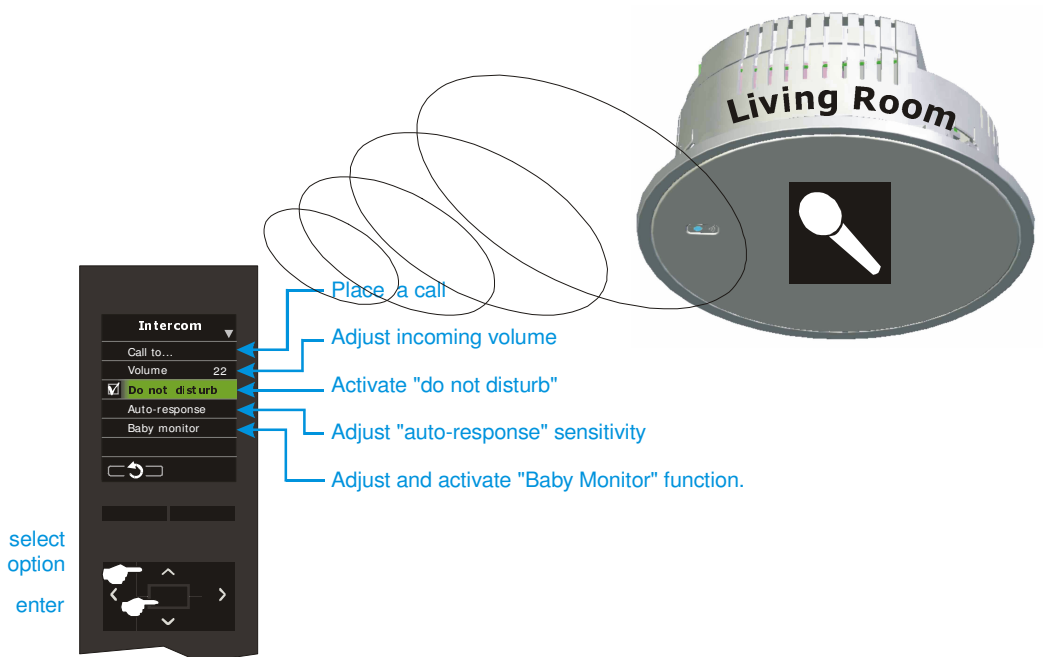
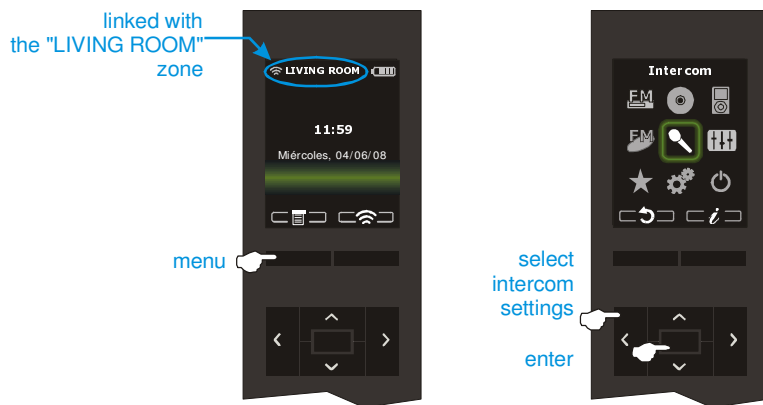
If a zone is in DO NOT DISTURB mode it cannot receive intercom calls from the baby monitor.

Baby monitor operation is similar to the procedure for intercom calls described in chapter 5.1. A call can be initiated by pressing the "intercom" key  and can be ended by pressing the "on/off" key  both from the transmitting unit and the receiving unit.

There is a specific menu option to finalize all the baby monitor operations throughout the home (see 5.3.).

5.3. Intercom settings

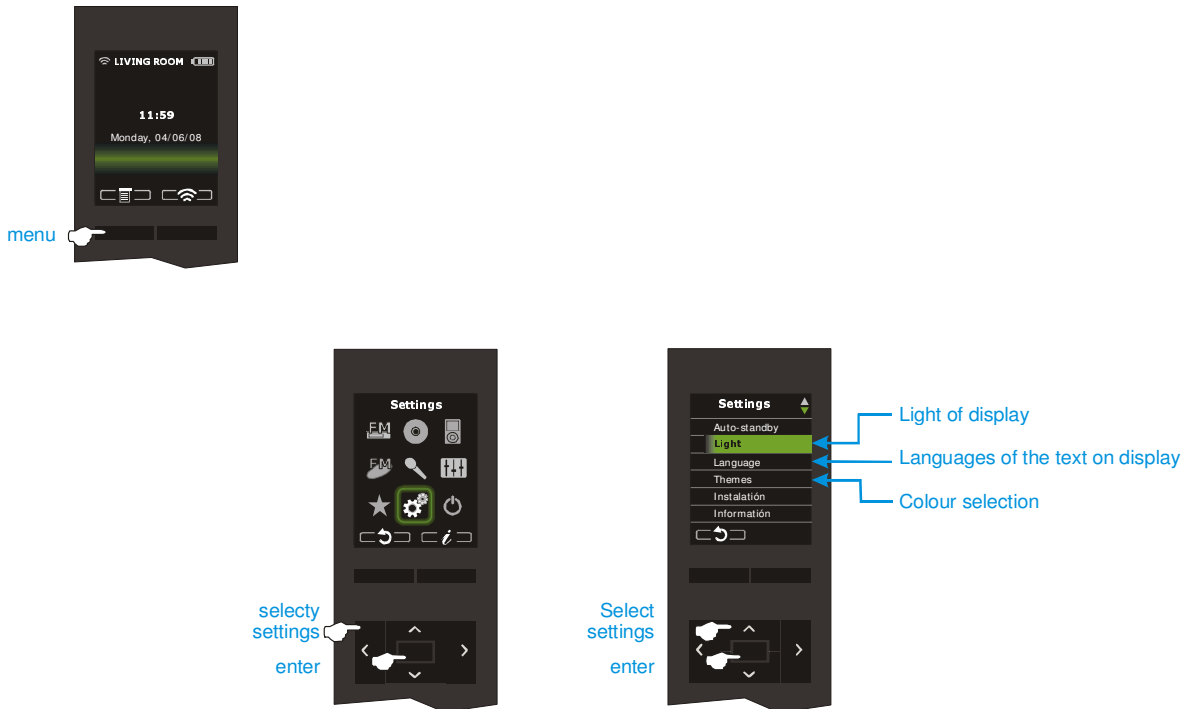
Intercom settings are linked with each Main Speaker and are programmed at the Remote Control to which it is linked at that time. Go to the intercom menu:



Because the sensitivity level of the voice detector was designed for extremely quiet environments, the voice detector may be permanently activated by background noise..

6. Display settings

Presentation functions are linked with each Remote Control and are operated and adjusted from the Settings Menu. These functions include the level of display illumination, language, and the motifs or colors that allow for personalization of the appearance of the Remote Control Unit.



FAQ's: Frequently Asked Questions

The Remote Control Unit loses coverage (waves signal flashes and disappears)

- ✓ Be sure that Main Speaker has been installed following recommendations of Installer Manual, chapter 2.5
- ✓ Follow the advices indicated in chapter 1.

Main Speaker does not work properly

- ✓ Be sure that Remote Control is looking to Main Speaker (which have a light indicator) and not to Auxiliary nor Passive Speakers
- ✓ Try to link following instructions of chapter 2.
- ✓ If it can not communicate, turn off the power of the installation from automatic switch (see installation manual, chap. 2.1), wait 10 seconds before you to go back to give power and see if the led speaker flashing when the speaker receives the power.
- ✓ If you still can not link with the Remote Control Unit, restart the installation with the factory settings following the instructions in the installation manual chapter 6.

The time clock that is show on the display of the Remote Control Unit is not correct.

- ✓ Be sure that the Remote Control Unit has communication with the Main Speaker, following the advise of chapter 1.
- ✓ When the waves of link appear on the display indicate a proper communication, wait a few seconds until the Remote Control Unit receives all information from the Speaker , among which is between the time and date.

The disc inserted in the Master Unit is not properly working

- ✓ Do not close the tray by hand. Use the key of the Master Unit on the front.
- ✓ Be sure when insert the disc that the led of the Master Unit on the front is flashing while the disc is being read. When it finishes, the led is on.
- ✓ Be sure that the song files are recorded on the disc in a proper format: CD-audio, CD-MP3, DVD-MP3.
- ✓ Do not use disc with different kind of files (only .MP3 files)
- ✓ Be sure that disc has been burnt in closed session (not multisession)

Audio quality of Disc Player or iPod is not good

- ✓ Make sure that the song files are recorded on the disc or on the iPod with a proper recorded speed, at least 192kbps

FM reception is not good, or there is not RDS information

- ✓ Be sure to follow recommendations on Installation Manual, chapter 2.4
- ✓ Try to active "forced mono" reception mode: tuner needs less signal level so noise will be reduced
- ✓ RDS signal is available only when FM signal is enough

Unable to navigate on the iPod

- ✓ Place the iPod on the Dock and check if the led of the front of the Master Unit is on.
- ✓ Make sure the iPod model is supported.
- ✓ Make sure the iPod firmware is update.

Do not listen the music from L1 y L2 external sound sources.

- ✓ Verify that the connection is good
- ✓ In the case of L1 external sound source, verify that iPod is not connected: note the channel iPod has priority over channel channel L1
- ✓ Verify signal level generated by external sound resource is correct.
- ✓ Adjust the signal level of potentiometer located on the back panel (Master Unit) until the led level fashing.

You can not send intercoms to a zone.

- ✓ Verify good communication between the remote Control Unit and Main Speaker (see chapter 1).
- ✓ Make sure that if you are send a intercom to the zone is not "do not disturb" mode (see chapter 5.3)
- ✓ Verify that the zone from where it is sending a intercom has the permissions to make the operation (see installation manual).

eISSOUND

Electrónica Integral de Sonido S.A.

HEADQUARTERS

Polígono Malpica Calle F Oeste
Grupo de Naves Gregorio Quejido, 87-88
50016 Zaragoza (España)
Tel.: 34 976 465 550
Fax: 34 976 465 559
comercial@eissa.com


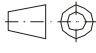
MADRID

Poeta Rafael Morales 2, oficina 2ºB
28703 San Sebastián de los Reyes
Madrid (España)
Tel.: 34 91 6593 678
Fax: 34 91 6239 525
delegacionmadrid@eissa.com

www.eissa.com



ESTE CAJETÍN NO FORMA PARTE DEL MANUAL

TOLERANCIA DE MEDIDA LIBRE SISTEMA DE TOLERANCIAS ISO 8015 TOLERANCIAS GENERALES ISO 2768-mK TOLERANCIAS CRITICAS ISO 2768-HH FREE MEASUREMENT TOLERANCE ISO 8015 FUNDAMENTAL TOLERANCING PRINCIPLE IS 2768-mK GENERAL TOLERANCES IS O 2768-HH CRITICAL TOLERANCES		LAS COTAS ENCUADRADAS SON CRITICAS THE DIMENSIONS IN BOXES ARE CRITICAL		Denominación <i>Denomination</i> MANUAL USO S500 inglés				
Modificación <i>Modification</i>				Material <i>Material</i> tinta blanco y negro portada y contraportada papel estucado brillo 135gr interiores papel 80gr		Código Pieza <i>Part Code</i> 64460041		
	Fecha <i>Date</i>		Nombre <i>Name</i>		Escala <i>Scale</i> 1:1	Din A4	Código Plano <i>Drawing Code</i> CC-1132	Edición <i>Edition</i> 01
	Proyectado <i>Projected</i>	01/12/2008	LABOS					
	Dibujado <i>Drawn</i>	18/02/2009	LABOS					
Aprobado <i>Approved</i>	18/02/2009	LABOS		Página <i>age</i> 1 de 1				