

Brief Instruction ▶ Mounting KNX WS1000 Style



Warning, mains voltage! National legal regulations are to be observed. Installation, inspection, commissioning and troubleshooting of the device must only be carried out by a competent electrician.

Preparing the installation location



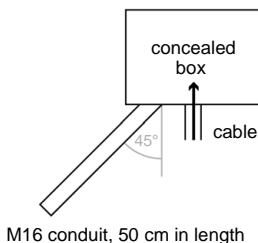
The device must only be installed and used in dry, interior spaces. Avoid condensation.

Cut-out dimensions for concealed box:

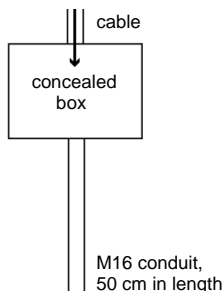
W=248 mm +1 -0 | H = 165 mm +1 -0 | D = 84 mm:

An external antenna can be connected in order to improve wireless communications. During installation, a **conduit 50 cm in length** should be placed beneath the recessed housing, in which the external antenna can be mounted (antenna dimensions approx. 565 x 8 x 5, L x W x H in mm):

*Conduit angled diagonally downwards
(for cable access from above or below)*



*Conduit angled vertically downwards
(only for cable access from above!)*



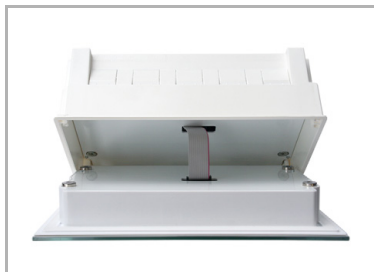
Preparing for installation



The display unit is held by magnets. Remove the front part from the concealed box.

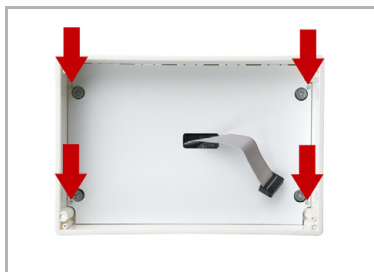
Caution: The display is connected with a flat-ribbon cable to the circuit board in the concealed box.

Brief Instruction ▶ Mounting KNX WS1000 Style

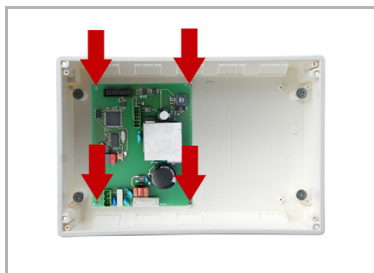


Loosen the plug so that the display unit can be removed.

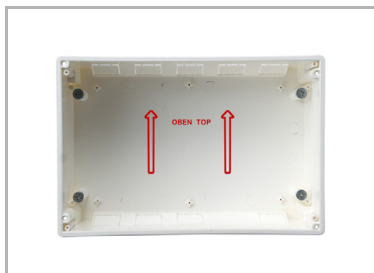
Remove all parts of the transportation lock/packing.



The security covering in the concealed box is attached with four screws: Loosen the screws and take off the security covering.



Remove the circuit board from the concealed box to be installed a keep it in a place where it is protected from dirt. **It may never be exposed to dust or moisture!**



Place the concealed box in the wall so that the arrows point upwards.

Brief Instruction ▶ Mounting KNX WS1000 Style

Wall-fitting



For fitting, screw the cover (board) on to the concealed box with the enclosed screws.

Cavity wall fitting



Clamp the concealed box to the wall with the four enclosed screws.

Upon delivery, the pouch containing the assembly screws can be found in the control unit's concealed box.

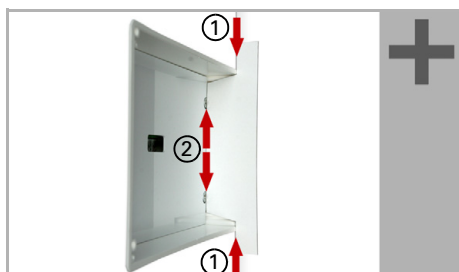
Assembling the control unit with concealed box

During electrical installation, please introduce all connection cables into the concealed box through the lower or upper side wall. In the process, keep the individual connection wires short to prevent long reserve loops.

After connecting the cables screw the security covering onto the concealed box.



The security covering must be fixed before the control is put into operation! It prevents contact with current-carrying parts in the concealed box.



Adjust the screws of the magnetic mounting with the enclosed template. Each of the four screws must be adjusted individually in height.

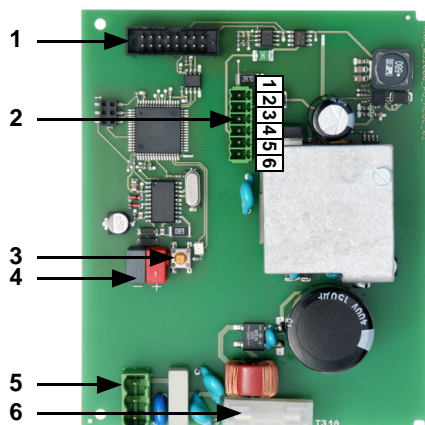
When the edge of the template rests on the wall surface (1), the template must rest on the mounting screws as well (2).

Brief Instruction ► Mounting KNX WS1000 Style

By adjusting the mounting screws, the display unit will rest flat on the wall later and be held by the magnets safely.

Connect the flat ribbon cable to the display and place the display unit on the concealed box. The magnets must be attracted by the mounting screws considerably and the display unit must rest tightly on the concealed box.

Structure of the connector board



- 1 Connector for flat-ribbon cable to front board
- 2 Weather station:
terminal 1 (GND) and 2 (+).
Supply voltage (e. g. indoor sensor):
terminal 3 (12 V) and 4 (0 V) or
5 (12 V) and 6 (0 V),
max. 400 mA altogether
- 3 Programming button KNX
- 4 KNX bus plug +/-
- 5 Mains connection L/N/PE 230 V /
50 Hz
- 6 Microfuse T630 mA