

**Bus coupler 3**

Order-No. : 2008 00

**Bus coupler 3 external sensor**

Order-No. : 2009 00

**Operationsmanual****1 Safety instructions**

Electrical equipment may only be installed and fitted by electrically skilled persons.

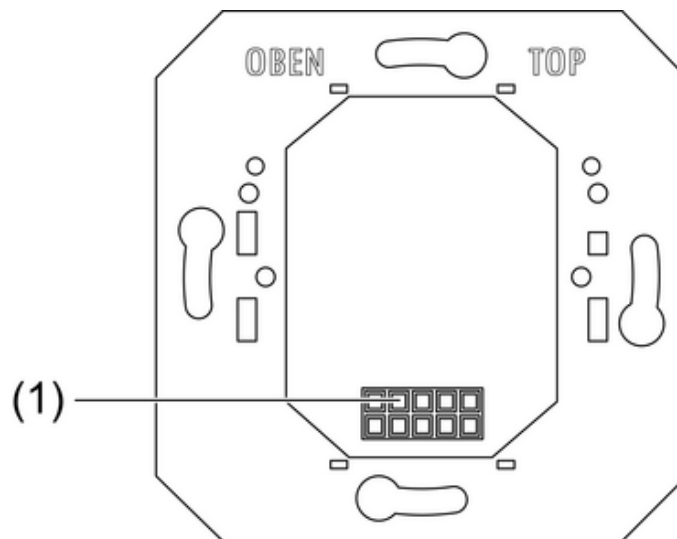
Failure to observe the instructions may cause damage to the device and result in fire and other hazards.

During installation and cable routing, comply with the regulations and standards which apply for SELV circuits.

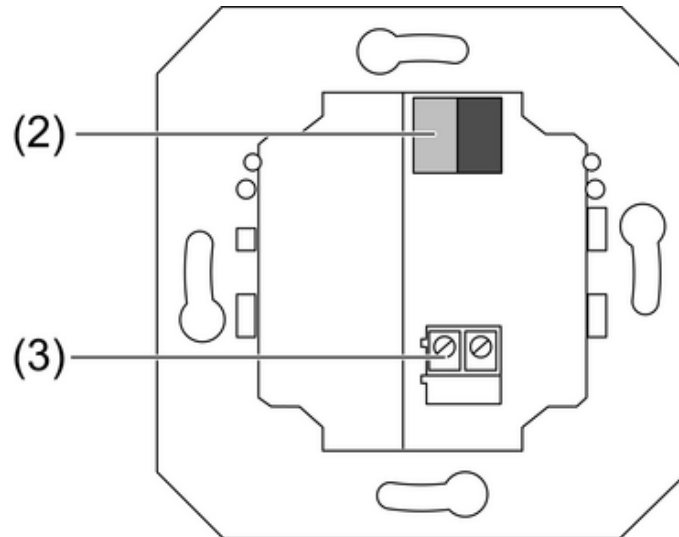
**Danger of electrical shock!** When mounting with 230 V sockets in a multiple combination: Use sockets with increased contact protection

During renovation work, protect the device against soiling through paint, wallpaper paste, dust, etc. Device can be damaged.

These instructions are an integral part of the product, and must remain with the end customer.

**2 Device components**

picture 1: Front side



picture 2: Rear side

- (1) Interface to KNX application module
- (2) Bus connection
- (3) Optional: Temperature sensor connection

### 3 Function

#### System information

This device is a product of the KNX system and complies with the KNX directives. Detailed technical knowledge obtained in KNX training courses is a prerequisite to proper understanding.

The function of this device depends upon the software. Detailed information on loadable software and attainable functionality as well as the software itself can be obtained from the manufacturer's product database. Planning, installation and commissioning of the device are carried out with the aid of KNX-certified software. The latest versions of product database and the technical descriptions are available on our website.

#### Intended use

- Coupling of KNX application modules with programming button to KNX systems
- Installation in appliance box to DIN 49073

#### Product characteristics

- Supply of KNX application modules
- Depending on equipment: Connection of external temperature sensor (see chapter 5.2. Accessories) and forwarding of the measuring signal to the application module

**i** The device will not function without an application module.

## 4 Information for electrically skilled persons

### 4.1 Fitting and electrical connection

**DANGER!**

Electrical shock on contact with live parts in the installation environment.

Electrical shocks can be fatal.

**Before working on the device, disconnect the power supply and cover up live parts in the working environment.**

#### Mounting and connecting the device

Observe the installation orientation. Note the **TOP** marking.

- Connect the device to the bus cable with the bus connection terminal (2). Red = +, Black = –.
- Optional: Connect the external temperature sensor to the terminal (3).
- Install the device in the appliance box.
- Attach the KNX application module.

## 5 Appendix

### 5.1 Technical data

Ambient temperature

-5 ... +45 °C

Storage/transport temperature

-25 ... +70 °C

Safety class

III

KNX medium

TP 1

Start-up mode

S mode

Rated voltage KNX

DC 21 V ... 32 V SELV

Connection mode KNX

Standard KNX/EIB connection terminals

### 5.2 Accessories

Remote sensor

Order-No. 1493 00

Protective cover plate

Order-No. 0015 01

### 5.3 Warranty

We provide a warranty as provided for by law.

Please send the unit postage free with a description of the defect to our central customer service via your specialised dealer:

**Gira**

**Giersiepen GmbH & Co. KG**

Service Center

Dahlienstraße 12

42477 Radevormwald

Germany

**Gira**  
**Giersiepen GmbH & Co. KG**  
Elektro-Installations-  
Systeme

Industriegebiet Mermbach  
Dahlienstraße  
42477 Radevormwald

Postfach 12 20  
42461 Radevormwald

Deutschland

Tel +49(0)21 95 - 602-0  
Fax +49(0)21 95 - 602-399

[www.gira.de](http://www.gira.de)  
[info@gira.de](mailto:info@gira.de)