

INTRODUCTION

The HC2-KNX 7" and HC2L-KNX 10,4" touch panels from Iddero can be used as indoor monitors for compatible video door phone systems. This application note provides the necessary information to configure this functionality.

This document is based on firmware version **1.8.2**.

COMPATIBILITY

Iddero touch panels are compatible with a wide range of IP video door phones. The following is a partial list of supported door phone types:

- 2N Helios IP (Vario, Force, Safety, Uni)
- Mobotix T24 / T25
- Robin Telecom (Compact SIP, SmartView SIP)
- TCS (AVU IP series)
- TCS (via TCS SIP gateway and IP video streamer)
- Behnke IP door phones
- Baudisch IP door phones (Baudisch.SIP DoorStation, Baudisch.SIP DoorModule system)

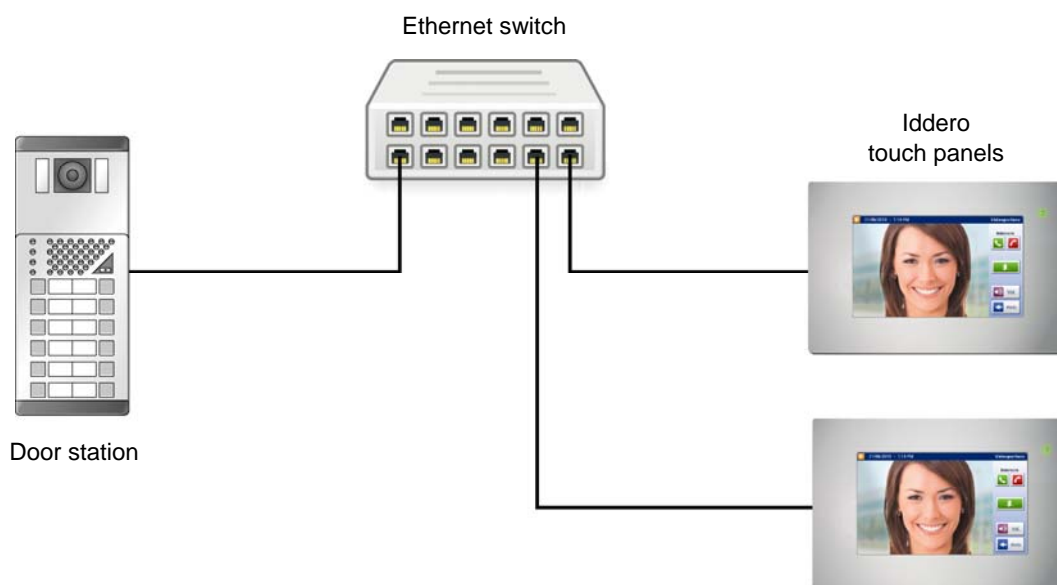
Additional information on specific IP door phone types is available in separate application notes.

Please contact Iddero directly to check compatibility with other brands and models of IP video door phones.

INTERCONNECTION

Iddero touch panels support IP-based door phone systems. In order to interconnect the video door phone system and an Iddero touch panel, only a TCP/IP network connection is required.

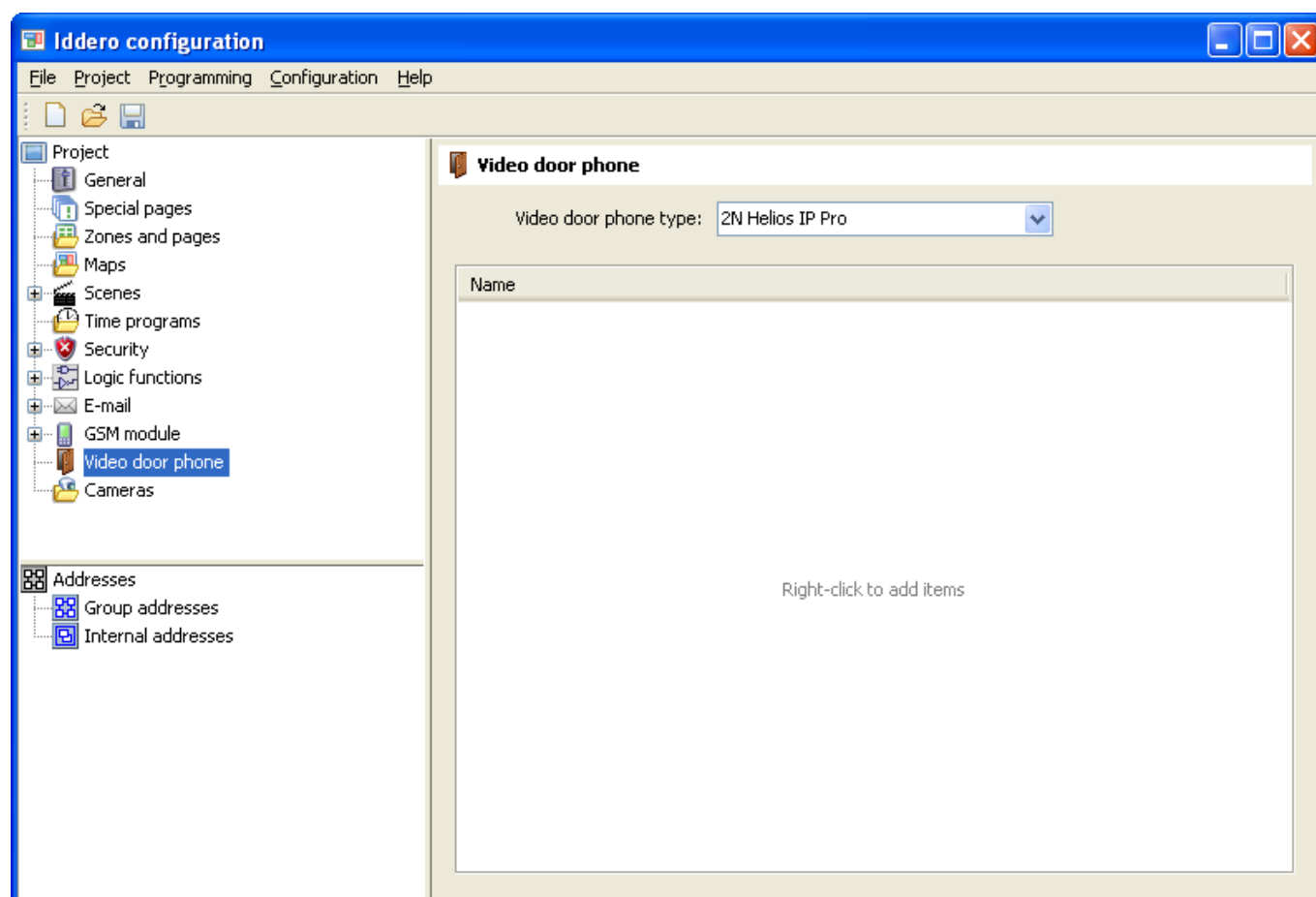
The following figure shows a typical configuration where the door phone system and the Iddero touch panels are connected to different ports of an Ethernet switch, using standard UTP cable. Category CAT5E or better is recommended.



INITIAL CONFIGURATION

The video door phone function must be enabled in the Iddero configuration software. Before proceeding, please make sure you have selected “HC2-KNX” or “HC2L-KNX” in the “System type” field of the “Project” section.

Then, please go to the “Video door phone” section, and select the type of video door phone system to use from the “Video door phone type” drop-down list.



Now you can add door stations in the “Video door phone” section. For each door station the following information is required:

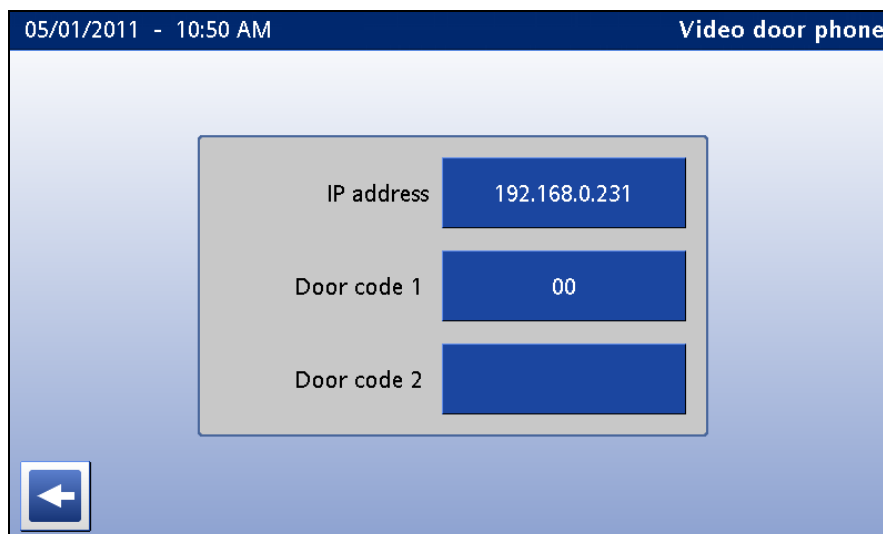
- **Name:** A descriptive name that will be shown onscreen to identify this door station.
- **Associated SIP user:** SIP user assigned to this door station. On setups with multiple door stations, this field is used to determine the calling station.
- **IP address:** The IP address of the door station. For video door phones that use separate IP addresses for the audio and video streams (e.g. Behnke, Baudisch), this should be the IP address corresponding to the camera (video) module.

Depending on the selected video door phone type, additional options may appear such as: Open door method (HTTP or DTMF tones), extra button configuration (for controlling an additional door or courtesy lights), username and password for IP access to the door station, and so on.

Some of these parameters can be modified later from the touch panel itself (see next section).

TOUCH PANEL SETTINGS

In the System Settings menu, press the “Video door phone” button to enter the video door phone settings section. If multiple door stations have been defined you will also need to select which one you want to work on.



Available options will depend on the selected video door phone type and door station configuration.

- *IP address*: Equivalent to the parameter with the same name in the configuration software.
- *Door code 1*: Enter the door opening code as configured in the door station, for example “00”. Shown only if the door opening function is configured to use SIP (DTMF).
- *Door code 2*: Enter the door opening code for the second door, if available. Shown only if the door opening function is configured to use SIP (DTMF) and control of an additional door has been enabled in the configuration software.
- *Username*: User name for IP access to the door station. Shown only if required.
- *Password*: Password for IP access to the door station. Shown only if required.