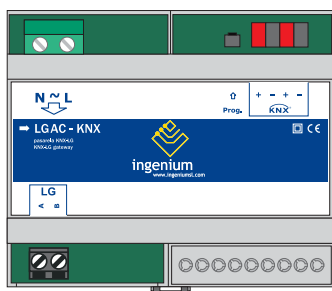


➔ LGAC-KNX



General Description

Gateway for the integration of LG air conditioning systems with the KNX system. Direct connection to the RS485 bus of LG outdoor units. Allows to control up to 64 indoor units.

This device allows to control individually the set point temperature, the measured temperature, the working mode (cool, heat, fan, dry and automatic mode) and the fan speed (low, medium and high).

Technical information

Power supply - 230 Vac.

Max. power consumption - 2,6 VA @ 230Vac.

KNX Supply - 29 Vdc from KNX BUS.

Current consumption - 1 mA from KNX BUS.

Mounting - DIN rail.

Size - 6 DIN modules.

Environment temperature range - Operation: from -10°C to 55°C / Storage: from -30°C to 60°C / Transportation: from -30°C to 60°C

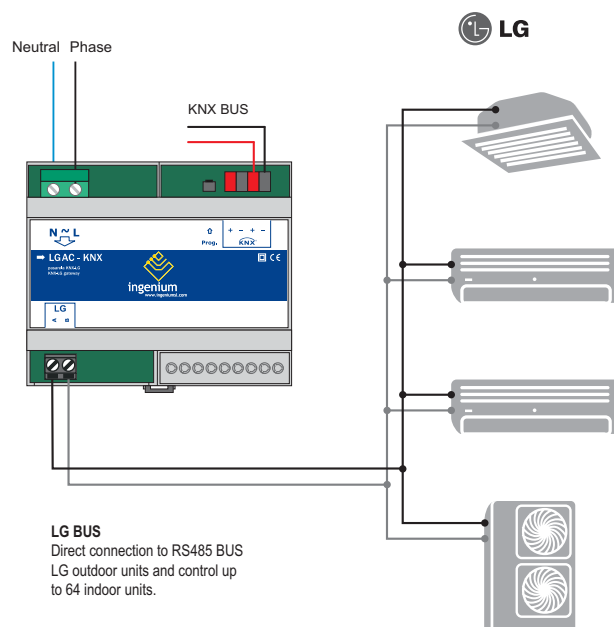
Regulation - According to the directives of electro magnetic compatibility and low voltage EN 50090-2-2 / UNE-EN 61000-6-3:2007 / UNE-EN 61000-6-1:2007 / UNE-EN 61010-1.

Remarks

Feed low voltage lines (BUS and inputs) in separate ducting to that of power (230V) and outputs to ensure there is enough insulation and avoid interferences.

Do not connect the main voltages (230 V) or any other external voltages to any point of the BUS.

Installation



Compatible systems

In some cases the integration requires the installation of additional cards in the outdoor units of the LG system, the type of the additional card depends on the line of indoor units used in each case as shown in next picture:

