

DIGITAL I/O MODULE EIO12S



TECHNICAL DATA

Device	EIO12S
Power Consumption	0.9W
Number of binary inputs	12
Number of binary outputs	12
Water Flood Sensor*	1
Digital Sensors*	2x Temperature and Humidity
Input Voltage	100-250VAC@50Hz
Contact Capacity	Inrush type (16A, Inrush current 100A)
Type of protection	IP 20
Ambient temperature range	- 10°C...70 °C
Mounting	DIN Rail
Dimensions	158x91x60mm (WxHxD) → 9 DIN units
Weight	390gr

*The sensors are optional.

The digital I/O module is available with 12 inputs/12 outputs. Additionally sensors module, which allows temperature, humidity and water flood detection, can be added.

The I/O module can work as standalone or inside an IP network with Interra touch panel and Interra Server software solutions.

The inputs/outputs can be configured freely depending on the project needs.

FUNCTIONS

- Lighting
- Shutter 230 VDC and 24VAC.
- Climate.
- Digital inputs (alarms, do not disturb, make up my room, energy saving...).
- Water floor alarm.
- Hotel Management and Monitoring Software.

Outputs can be controlled with the combination of inputs and outputs and with the help of logic operators.

Time-based control with pre-time and post-time configuration.

Control with rising or falling edge sensitive to changes.

Last situation memory against power failure.

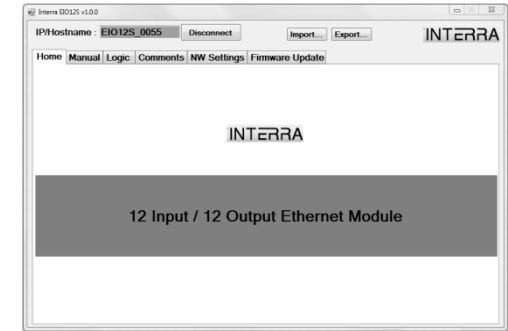
LCD MENU

Via the LCD screen available, it is possible to know the status of the device channels and the network settings.

The up line shows the current status of every input while the bottom line shows the status of the outputs.

CONFIGURATION

The complete configuration of the device is performed via "EIO12S.exe" application.



CONNECTION DIAGRAM HOTEL EXAMPLE

