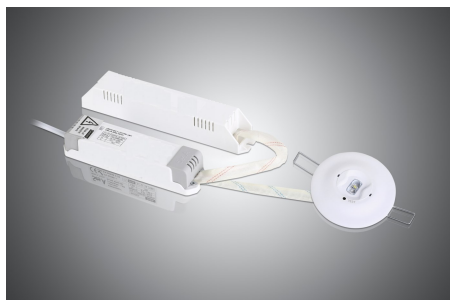


ITR832-AA1 - Emergency Lighting Luminaire with Asymmetric Lens



Device	ITR832-AA1
Power Supply	230 VAC 50/60 Hz
Rated Duration	3 h
Battery Charging Time	24 h
Battery Type	3,6 V Ni-Cd
Light Source	Power LED
Diffuser	Asymmetric Lens (Optional: Symmetric)
Type of Protection	IP 20
Insulation Class	II
Temperature Range	Operation (-5°C...40°C) Storage (-15°C...55°C)
Maximum Air Humidity	< 90 RH
Material	Polycarbonate body
Colour	White
Flammability	Non-flammable product
Dimensions	Spot : 111 x 170.5 x 38.6 mm (WxHxD) Unit : 41 x 169.5 x 31.5 mm Battery : 39 x 221 x 34 mm

DESCRIPTION

Interra ITR832-AA1 is an emergency lighting luminaire with SMD power LED application and 3 hours duration usage in case of emergency. It offers an effective solution thanks to its long-lasting (approximately 50,000 hours) life-time. In addition, ITR832-AA1 has remote control and test features with DALI interface, and green and red LED status indicators. However, it has overcharge and deep discharge protection and charging circuit with constant voltage and current protect. Moreover, it operates safely under harsh environments with emergency lighting functions in case of low voltage and by interruption of the unswitched phase. ITR832-AA1 emergency lighting luminaire has polycarbonate body and can be recessed mounted on the proper locations.

General Features:

General features of the emergency lighting luminaire is shown below. Operate mode is non-maintained so that only lights in case of the mains failure.

Rated Duration	Operating Mode	Light Source	Light Intensity on Energy/Emergency	Type of Mounting	Battery Charging Time
3h	Non Maintained	Power LED	- / 205 lm	Recessed / Surface(*) Mounted	24 h

(*) : Surface mount is optional

Mains Data:

Mains data information is shown in the table below. Mains current and rated power values are measured under 230 V mains.

Rated Power	Battery Capacity	Mains Current	Power Factor	Dimensions (mm)	Weight (kg)	Carton Box Quantity
1,65 W	3,6V / 1800mAh	0,019	0,37	41x169.5x31.5	0,080	1

Battery Data:

Voltage	Capacity	Cell Type	Cell Size	Qty of Cell	Dimension	Weight
3.6 V	1800 mAh	SC	23	3	23x129±3x23	0,150

LED Indication Functions:

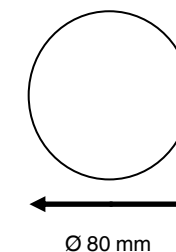
Permanent GREEN	Charge Mode
Fast flashing GREEN (0.1s on—0.1s off)	Function test
Slow flashing GREEN (1s on - 1s off)	Duration test
Permanent RED	Load failure
Slow flashing RED (1s on - 1s off)	Battery failure
Fast flashing RED (0,1s on- 0,1s off)	Charging failure
Double pulsing GREEN	Inhibit mode
Binary transmission of address via GREEN/RED	Addressing or identification
GREEN and RED off	Emergency mode

Test Switch Functions:

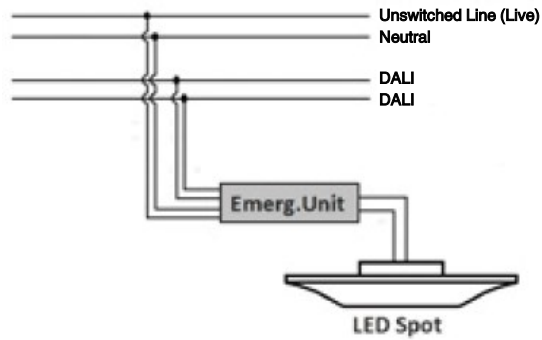
Short Press (<1s)	Starts the function test or terminate the all tests
Long Press (>5s)*	Starts the duration test.

(*) : The battery must be 100% full before the duration test can be started.

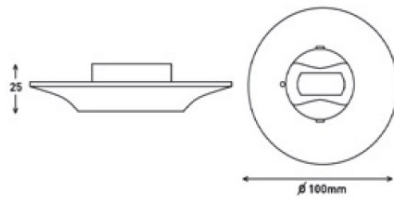
Recessed Mounting Hole Size:



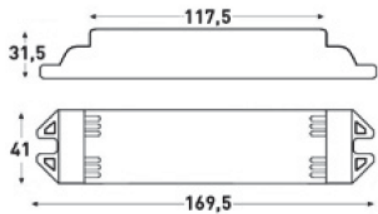
Wiring Diagram:



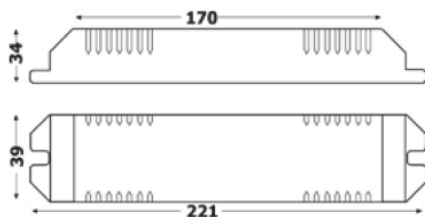
Technical Drawing (LED Spot):



Technical Drawing (Emergency Unit):



Technical Drawing (Battery Box):

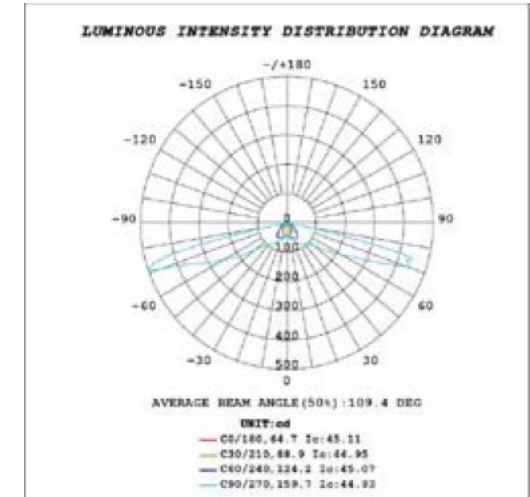


Photometry Data (1W):

Open Area (Anti-Panic) Lighting (for min. 0,5 lux) (Symmetric Lens)		
Mounting Height (m)	Distance Between Luminaire and Wall (m)	Distance Between Luminaires (m)
2,00	2,00	4,00
2,50	2,50	5,00
3,00	2,50	5,00
3,50	3,00	6,00
4,00	3,00	6,50

Escape Route Lighting (for min. 1 lux) (Asymmetric Lens)		
Mounting Height (m)	Distance Between Luminaire and Wall (m)	Distance Between Luminaires (m)
2,00	5,50	10,50
2,50	7,00	13,50
3,00	6,50	16,00
3,50	6,00	16,50
4,00	3,50	11,50

Light Distribution Curve:



Photometry Data (3W):

Open Area (Anti-Panic) Lighting (for min. 0,5 lux) (Symmetric Lens)		
Mounting Height (m)	Distance Between Luminaire and Wall (m)	Distance Between Luminaires (m)
2,00	3,00	5,50
2,50	4,00	7,50
3,00	4,50	8,50
3,50	4,50	10,00
4,00	5,00	11,00

Escape Route Lighting (for min. 1 lux) (Asymmetric Lens)		
Mounting Height (m)	Distance Between Luminaire and Wall (m)	Distance Between Luminaires (m)
2,00	6,50	11,50
2,50	8,00	15,50
3,00	9,50	18,50
3,50	10,50	21,50
4,00	11,00	24,00

