

INTERRA I-MINI TOUCHPANEL

GENERAL INFORMATION





GENERAL INFORMATION

INTERRA IMINI TOUCHPANEL is an electronic device used in building automation systems.

TECHNICAL SPECIFICATION:

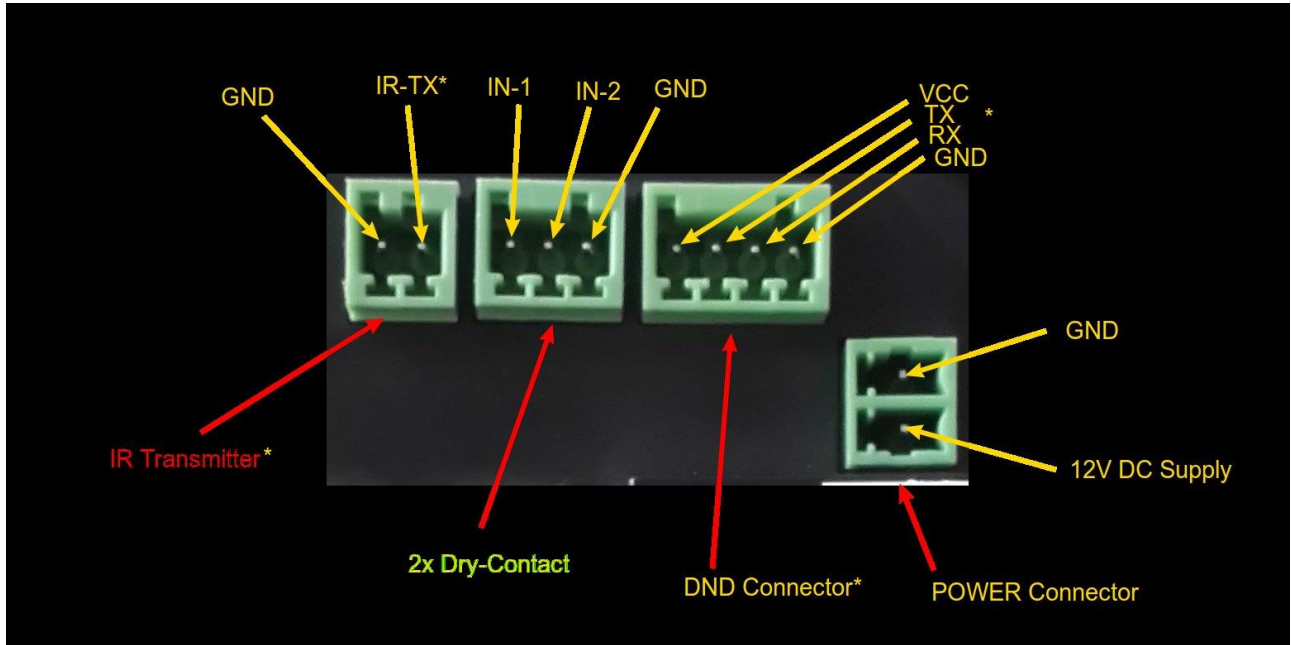
CPU	ARM® Cortex™-A7 Dual-Core 2 x 1.2 GHz (A20)
Memory	1 GB DDR3
Storage	8 GB EMMC
Video	HD H.264 2160p video decoding H.264 High Profile 1080p@30fps or 720p@60fps encoding
Audio	Integrated HI-FI 92dB Audio Codec 2x2watt Watts speaker amplifier Analogue Microphone with Noise Cancellation 2 x 0.9watt Speaker
Protocols	SIP, RTSP, MJPEG
KNX	Built-In KNX circuit
OS	Android 4.2.2 / Linux (Debian 8)
Working Temperature	-20 °C +70 °C
USB	1xUSB-OTG used for programming
Connectivity	100Mbps Ethernet
Input	2x Dry-Contact Inputs
Display	6.5" LCD with 480x800 resolution (Portrait mode)
Touch Screen	10.1" 5point capacitive anti-print finger,
Sensors	Ambient Light and Temperature Sensors
RTC	System includes RTC with CR1220 battery
IR Transmitter*	Available*
DnD Connection	DnD Connector* and over KNX
Dimensions (7")	103x180x33mm (mm) (WxHxD)



* marked items are available on the PCBA, but not available in current version.

CONNECTORS:





Power System:

INTERRA I-Mini is powered by a 12V-2A DC power supply. This power supply has a special green colored 2pin connector which is a terminal block in industrial grade. Pin indications are written on the plastic case.

When power is inserted, Imini boots-up automatically. No need to press anything.

KNX System:

INTERRA I-mini has a two pin green colored KNX WAGO connector. This connector has pin indications on the plastic box. You can connect I-mini to KNX Bus just as any other KNX device.

Programming & Setup of parameters are done with a special application called “Configurator”. It will be explained as below.

USB OTG:

INTERRA I-Mini has a USB Mini OTG connector in the backpanel. This connection is used for programming Android OS image files, not used for applications. It is for service and manufacturing purposes only. Please do not insert any device here.

**Serial Console:**

INTERRA I-Mini has a USB Mini OTG shaped Serial Terminal in the backpanel. This connector is used for debugging purposes only. Please do not insert any device here.

IR Transmitter:

INTERRA I-Mini has a two pin external infrared transmitter in the back panel. This function is not available at the moment, will be available in future. Please do not insert any device here.

Also, in the front panel, there is another LED, which transmits same IR signal with LED. This function is also not available at the moment, will be available in future.

Energy Saver / 2pin Dry-Contact Input:

INTERRA I-Mini has a 3pin green connector (middle one) in the backpanel. This connector is used for dry-contact inputs, such as doorbell button or a magnetic sensor.

DnD Connector:

INTERRA I-Mini has a 4pin in the backpanel. This connector is used to connect DnD-IO product directly with 4-wire cable. This function is not available at the moment, will be available in future. Please do not insert any device here.

Ethernet:

INTERRA TOUCHPANEL has a standard 10/100Mbps RJ45 ethernet connector.

Ambient Light Sensor:

Imini has an ambient light sensor, located in the front top side of the device. This sensor is not used at the moment. This function is not available at the moment, will be available in future.

Temperature Sensor:

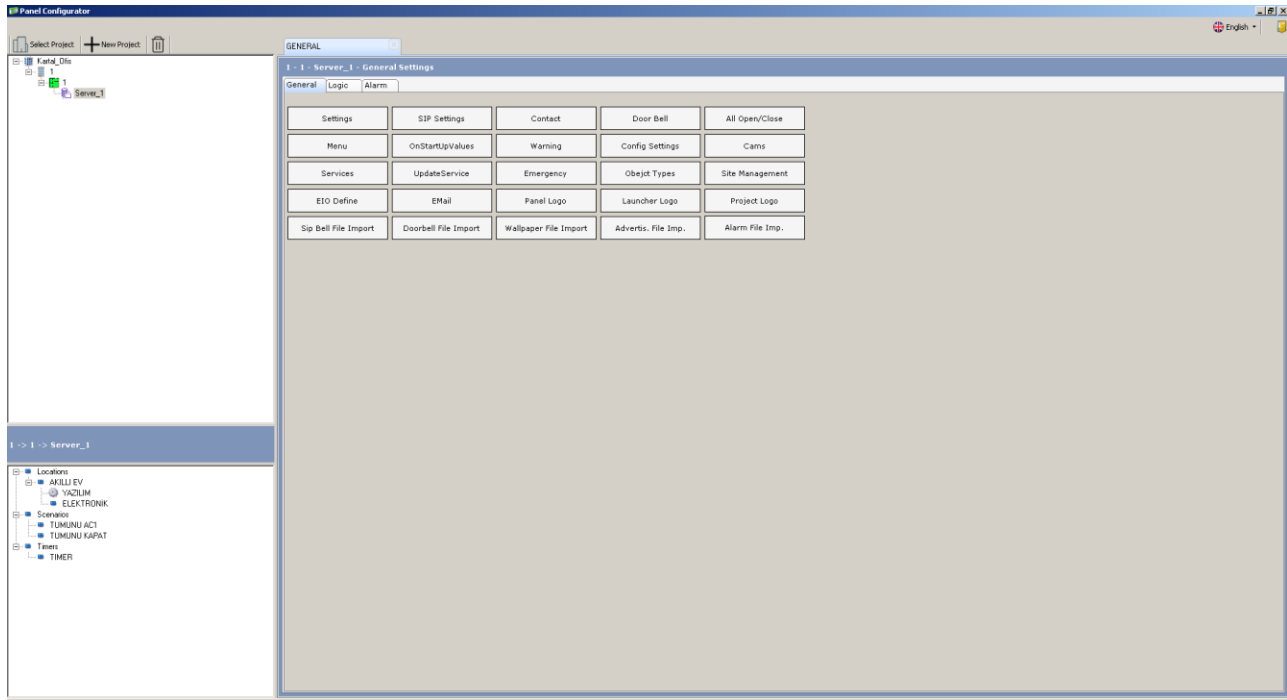
Imini has a temperature sensor, located in the left side of the device. This sensor can be used for displaying the ambient temperature and thermostat functionality (2-Points Control).



THE CONFIGURATOR

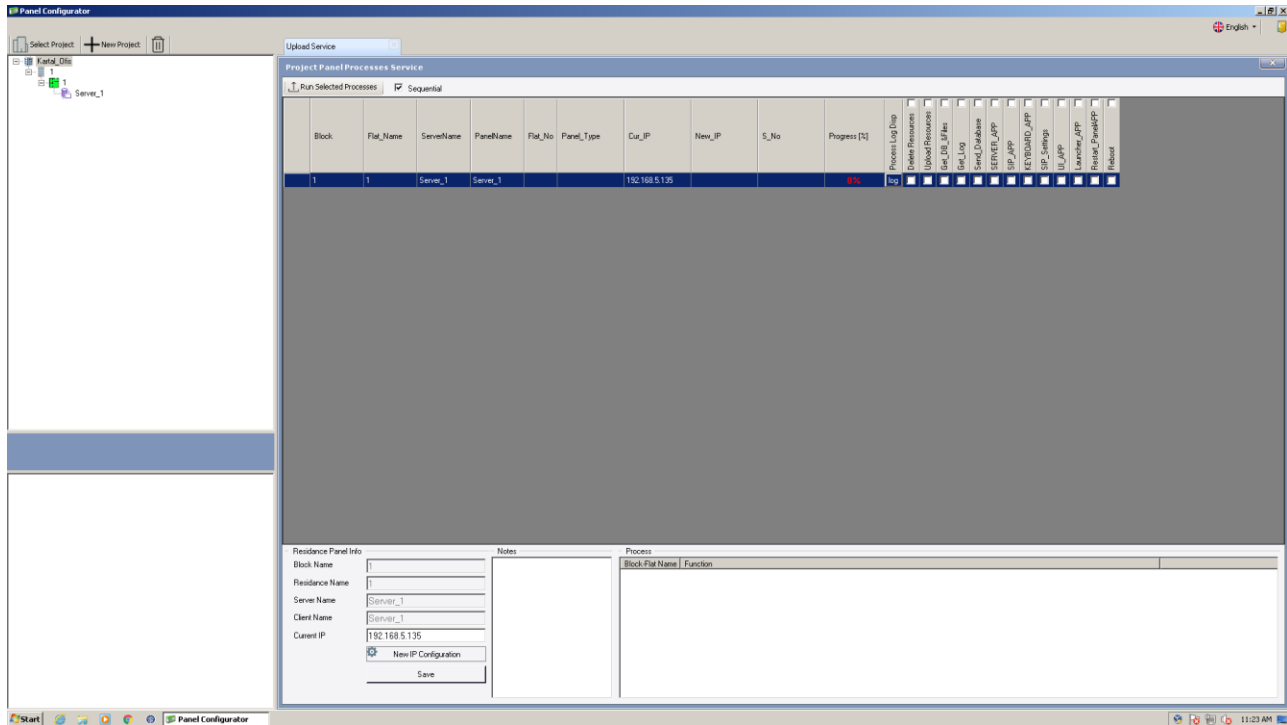
I-Mini product is setup and configured via one application called Configurator. This application runs on Windows® OS, and it needs .NET 4.5 libraries.

The main user interface of the Configurator is shown in below photo:





And for downloading & uploading configurations:



User Manual of the configurator will be provided in a separate file.