

AC Cloud Control

Installation Sheet INWFILGE001R0XX



HMS Industrial Networks S.L.U

© 2019 HMS Industrial Networks S.L.U All rights reserved.

This document has been carefully written by HMS Industrial Networks S.L.U and a lot of effort has been made to ensure no errors or mistakes are present in the document. HMS Industrial Networks S.L.U is not responsible for printing or clerical errors.

Information in this document is subject to change without notice. No part of this publication may be reproduced, stored in a retrieval system or transmitted in any form or any means electronic or mechanical, including photocopying and recording for any purpose other than the purchaser's personal use without the written permission of HMS Industrial Networks S.L.U.

HMS Industrial Networks S.L.U
Milà i Fontanals, 7
08700 Igualada
Spain

IntesisTM is a trademark of HMS Industrial Networks S.L.U Third party product names, company names and logos used in this document may be trademarks of their respective companies. Their use in this document is purely for information purposes only.

Table of contents

1 Safety instructions3

2 Device information3

3 Device connection3

4 Switch configuration4

1 Safety instructions

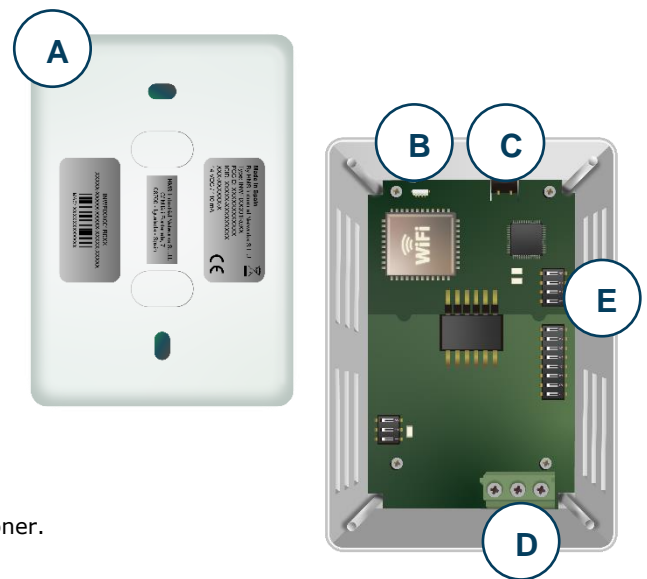
WARNING

Follow carefully this safety and installation instructions. Improper work may lead to serious harmful for your health and may damage seriously the interface and/or the AC indoor unit.

- This interface must be installed by accredited technical personnel (electrician, installer or authorized technical personnel) and following all the safety instructions.
- This interface must only be installed in a restricted access location.
- Before manipulating the AC indoor unit be sure it is completely disconnected from Mains power.
- In case of installation of the interface inside the AC indoor unit, fix the interface and communication cables preferably to any appropriate point of the plastic cover of the unit taking care of no blocking free movement of mobile parts and as far as possible from tubes containing liquids and power cables.

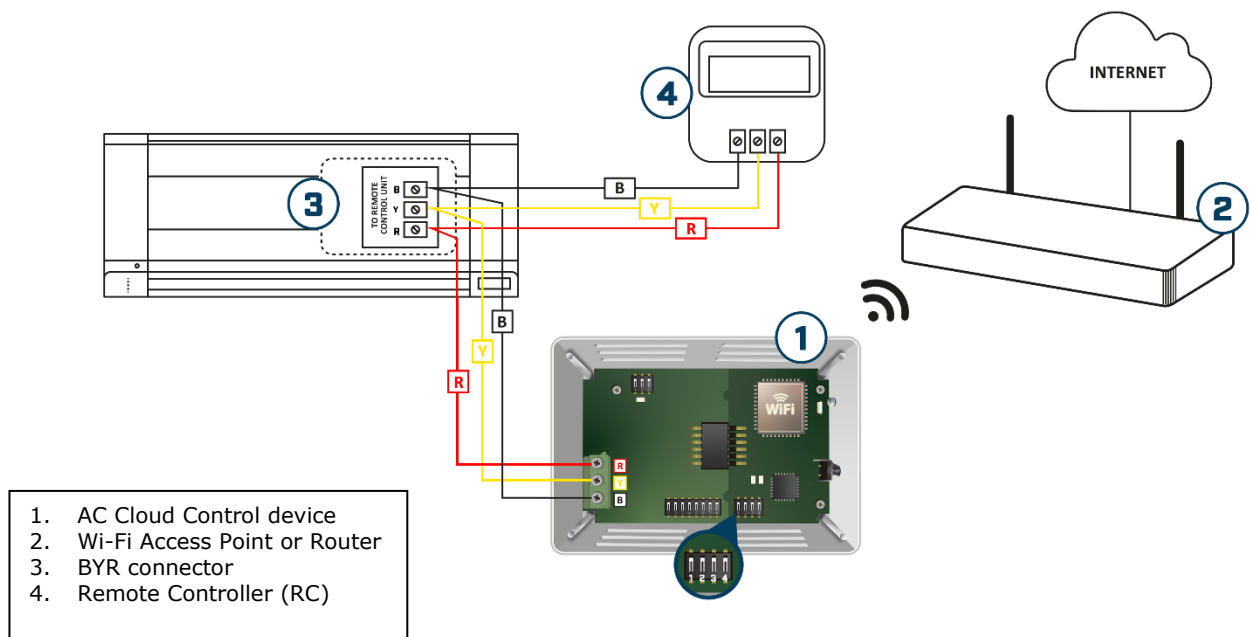
2 Device information

- A. Lid
- B. LED indicator
- C. Push button
- D. AC connector
- E. DIP-Switch



3 Device connection

- Unplug the Air Conditioner (AC) unit from mains.
- Access to the main Printed Circuit Board.
- Locate the BYR socket connector.
- Select a location for the device.
- Connect the AC Cloud Control device to the Air Conditioner.
- Close the Air Conditioner unit.
- Plug the AC to the power supply line.



4 Switch configuration

Please, make sure that switches are placed in the right position as per your desired settings.



| Switches 1 2 3 4 | Description |
|---------------------|--|
| 1 X X X | Master – LG Controller not needed in BYR bus. If it exists, it must be configured as Slave |
| 0 X X X | Slave - A LG Controller must be present in BYR bus, configured as Master (Default value) |
| X 1 X X | Error Type A – Machine must be Type A |
| X 0 X X | Error Type B – Machine must be Type B (Default value) |
| X X 1 X | High Performance Mode (Default value) |
| X X 0 X | Low Power Mode |
| X X X 1 | Max WIFI power (Default value) |
| X X X 0 | WIFI power is limited |

Switch 3

This switch determines the performance of the device. Running in High Performance Mode means maximum consumption and maximum device performance.

Switch 4

This switch determines the Wi-Fi range of the device. Maximum range is set by default. Consider that changing this switch may affect to device Wi-Fi communication, happening a device in a running installation not to reach the current access point or Wi-Fi network to which is connected.

In case no external supply is used: In very specific installations, AC port consumption may be overpassed, leading the device to reboot. If that happened, decrease device consumption by using SW3 and SW4.

NOTE: Remember that you need to power cycle the climate system or the AC Cloud Control device for the changes in the switches to be applied.