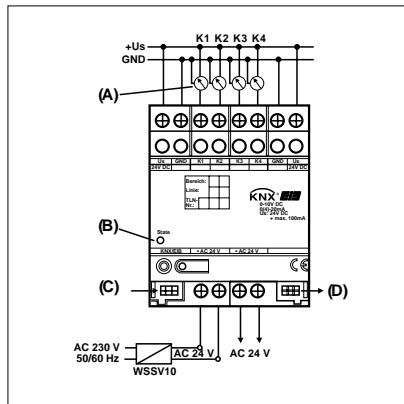


Analog output Extension Module

1



2

**Analog output module
(No KNX device)**

Series embodiment (SE)-device (4 units)

Ref.-No.

2204.01 REG AM

3

The analog output extension module exceeds a KNX Analog output, 2204.01 REGA by four additional sensor outputs. The analog output extension module offers four analog outputs which can be software parameterised for one of the following ranges. Outputs not used can be deactivated.

Voltage signals:	0 ... 1 V DC	0 ... 10 V DC
Current signals:	0 ... 20 mA DC	4 ... 20 mA DC

The analog output extension module needs an external 24 V power supply, WSSV 10.

4

Technical data

Supply voltage:	24 V AC \pm 10 %
Current consumption:	max. 170 mA
Power consumption at system plug:	typ. 150 mW
Connection:	Screw terminals: 0.5 mm ² to 4 mm ² , single-wire 0.34 mm ² to 4 mm ² , fine-wire (without ferrule) 0.14 mm ² to 2.5 mm ² , fine-wire (incl. ferrule)
Connection to KNX device:	6-pole system plug
Sensor input:	4 x analog
Output signal load:	voltage signal: \geq 1 k Ω current signal: \leq 100 Ω
Output current:	voltage signal: max. 10 mA per channel current signal: max. 20 mA per channel
Connection:	Screw terminals: 0.5 mm ² to 4 mm ² , single-wire 0.34 mm ² to 4 mm ² , fine-wire (without ferrule) 0.14 mm ² to 2.5 mm ² , fine-wire (incl. ferrule)
Protection:	IP 20
Safety class:	III
Ambient temperature:	-5°C ... +45°C
Storage/transport temperature:	-25°C ... +70°C (storage above +45°C reduces the lifetime)