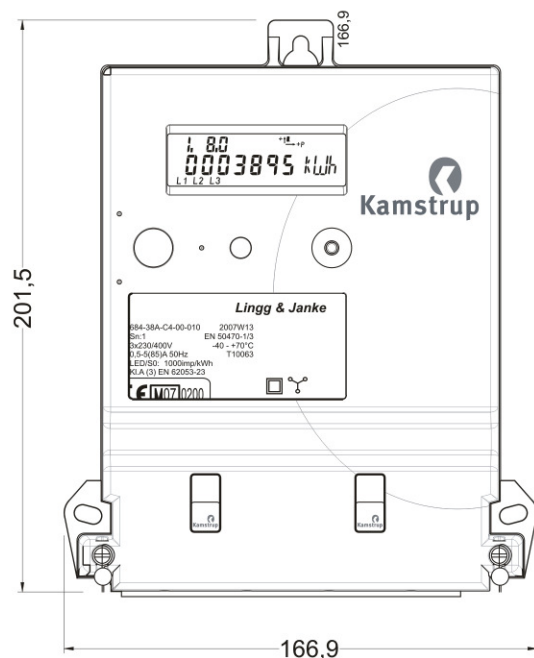


Installation dimensions



Manual

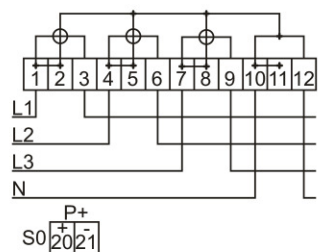
EZ382A-FW



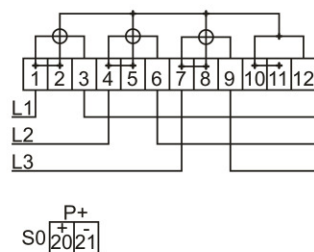
Connection diagrams

The valid connection diagram appears from the type label.

-phase, 4-wire



-phase, -wire (Aron)



www.kamstrup.com
 www.lingg-janke.de

Operating instructions

Connect the meter in accordance with the installation diagram on the meter's type label.

Depending on the configuration a fixed value will be displayed, or the display will change between selected indications every 10 seconds.

It is possible to change the display reading manually by activating the push button on the meter. The available readings will depend on the meter's configuration.

Security and installation guidelines

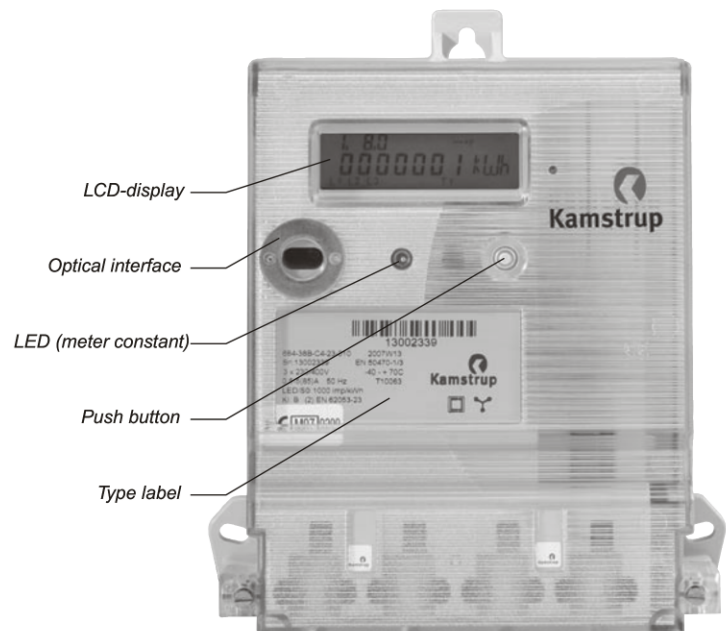
The meter shall only to be used for measuring electrical energy and shall operate within the specified values only.

The meter must be switched off when working on it. It can be highly dangerous to touch the meter parts when the meter is switched on.

Therefore, the relevant security fuse must be removed and kept in a place where it cannot be inserted by unauthorized persons.

Current local standards, guidelines, regulations and instruction must be observed. Only authorized personnel is permitted to install electricity meters.

Meters for direct connection must be protected against short circuit by a security fuse in accordance with the maximum current stated on the meter.



The meter constant LED blinks proportionally to the consumed active energy. Only authorized personnel must break the utility sealing.

LCD display

The phase indications L1, L2 and L3 have more than one function, they indicate one of three situations described below:

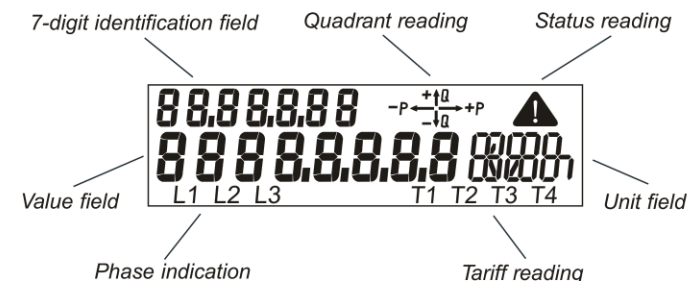
Segments L1- L3	Indicate
On	Both voltage and load above minimum limit. Active phases indicate consumption.
Off	The voltage is below minimum limit.
Blinking	Segments L1 – L3 function as load indicators. Voltage is above and load is below minimum limit. The load indicator is active 4 hours after meter reset.

If the load exceeds the minimum limit and the meter is configured with this reading, consumption will be indicated via the quadrant reading.

The meter's LED can be used provided that the quadrant indicator is not selected.

The measured unit is displayed in the right side of the display.

Tariff indicating active tariff.



Terminals

- Size: 1,5 – 5 mm
- Screw: Pz
- Torch: ,5 – Nm