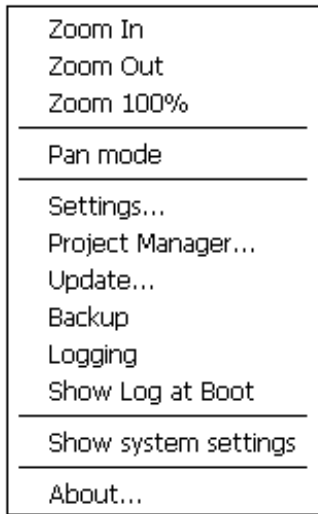
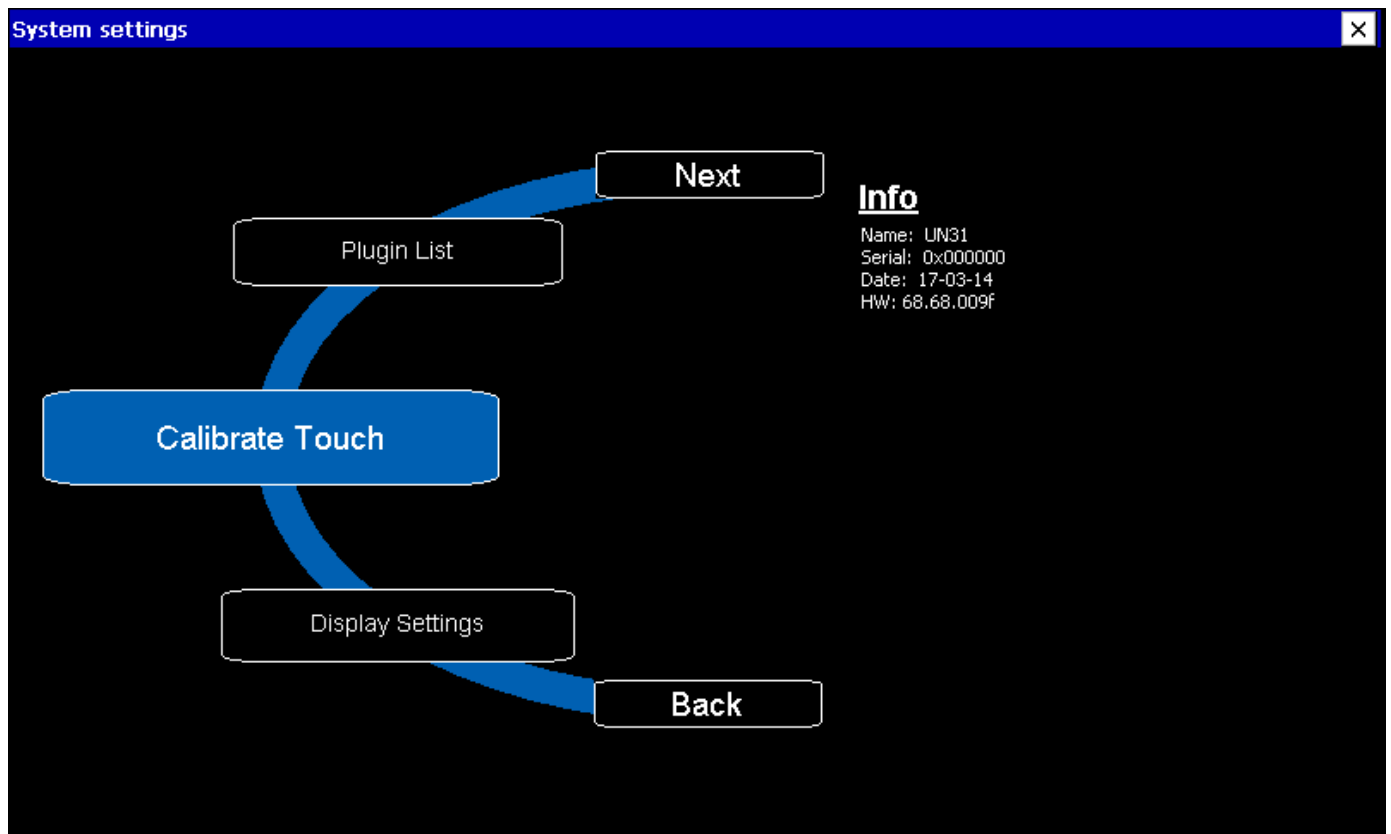


1.0 BASIC SETTINGS VISUCONTROL TOUCHPANEL

Press and hold your finger for a few seconds on the screen until the context menu appears.



Choose **Show system settings** to enter the basic settings and use the **Next** and **Back** buttons to navigate to the desired menu item.



Calibrate Touch:	Calibration of the screen
Plugin List:	Summary of the installed interfaces
Network:	Network settings
BSP Settings:	Operating system version, hour meter
Time:	Date and time adjustment
Display Settings:	Backlight and Brightness settings
Close:	Close System settings
Restart:	Reboot of the touchpanel