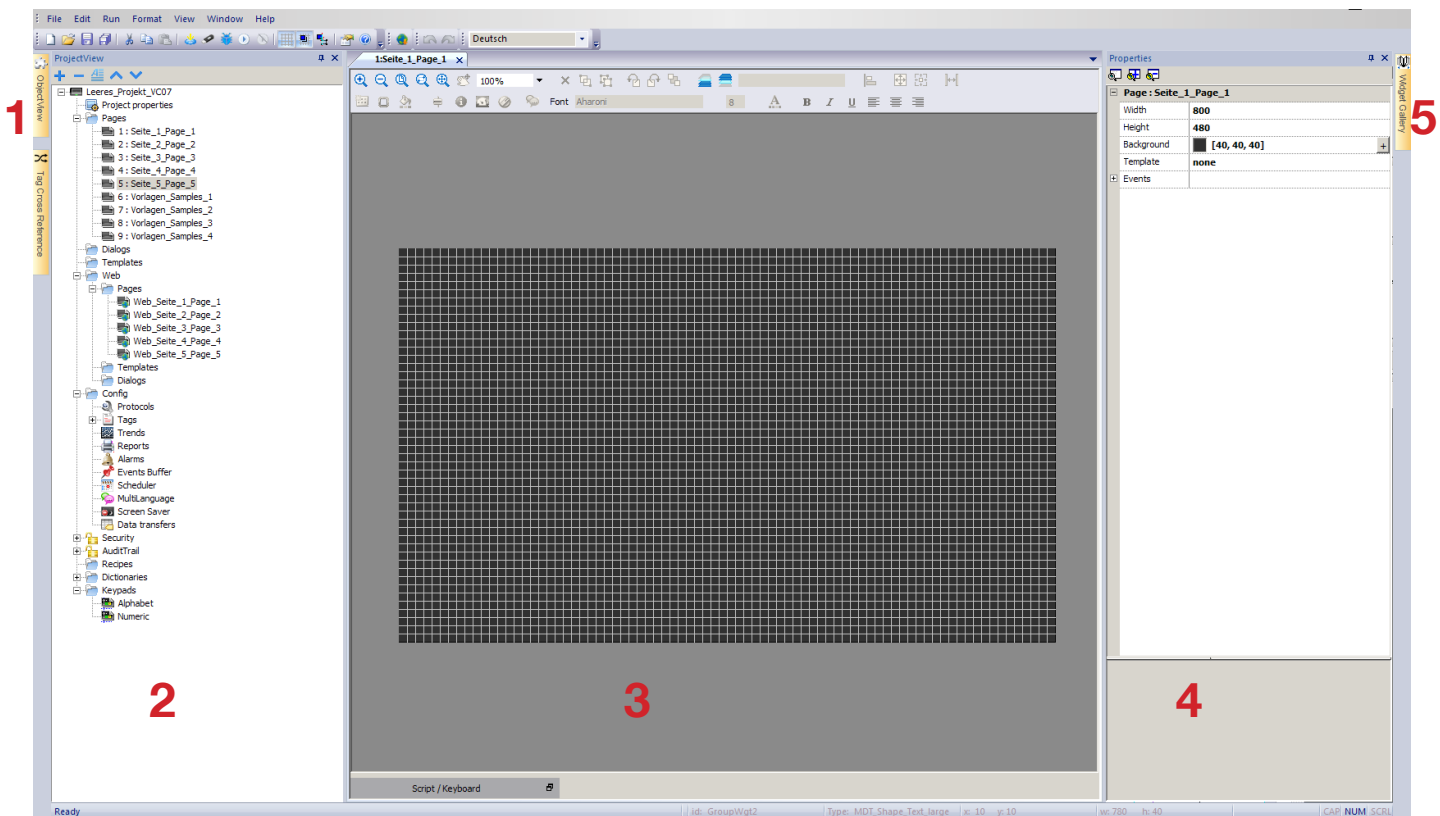


2.0 WORKSPACE SOFTWARE

Download this project from our homepage and open it with the VisuControl software:
http://www.mdt.de/download/Leeres_Projekt_VC07.zip

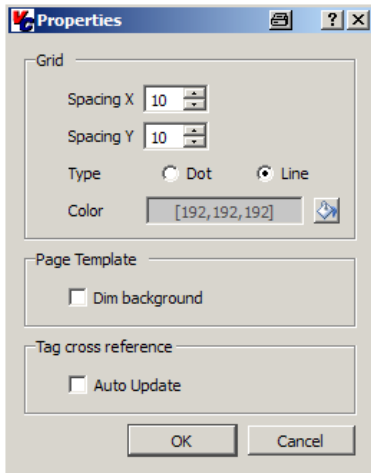
The VisuControl software consists of five workspaces:

- 1 Object View:** Enumerates the used widgets with the corresponding IDs used in the page.
- 2 Project View:** Presents the project files.
- 3 Working Area:** Creation of the touchpanel display and configuration of the project data.
- 4 Properties:** Shows the properties of the selected widget .
- 5 Widget Gallery:** Contains a large library of widgets, symbols and graphics.
(Only available in VisuControl Pro software)



2.1 BASIC SETTINGS SOFTWARE

Open the menu **View** and set the flags at **Show Grid** and **Snap to Grid**. Now open the menu **View/Properties** and enter these values for **Major/Minor Lines**:



Resume your inputs by pressing the der **OK** button.

2.2 SET THE PHYSICAL ADDRESS

Open the menu **Config/Protocols** in the **Project View** and click inside the column **Configuration**. Now press the button with the tree dots and enter the physical address of the VisuControl touchpanels inside the box **Individual Address H/M/L**:

