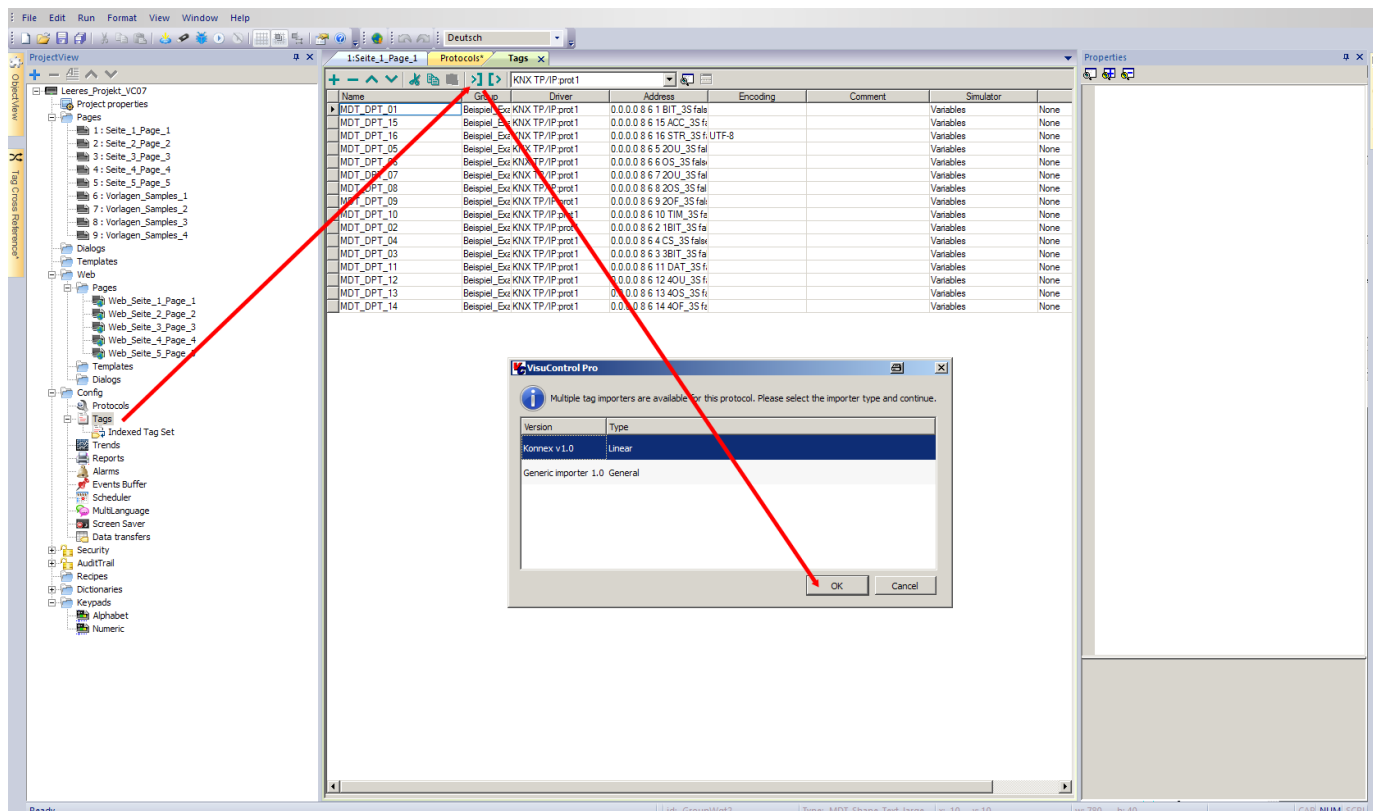


## 4.0 IMPORT GROUP ADDRESSES FROM THE ETS

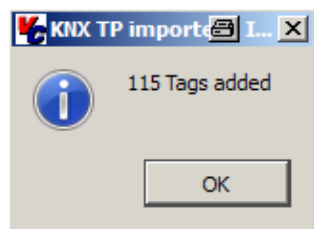
Download this project from our homepage and open it with the VisuControl software:  
[http://www.mdt.de/download/Empty\\_project\\_VC07\\_v1.zip](http://www.mdt.de/download/Empty_project_VC07_v1.zip) (**VC0701.03 touchpanel**)  
[http://www.mdt.de/download/Empty\\_project\\_VC10\\_v1.zip](http://www.mdt.de/download/Empty_project_VC10_v1.zip) (**VC1001.03 touchpanel**)

Open the ETS5 and load your current project. Open the menu **Extras** and click on **Export OPC**. Save the generated \*.esf file.

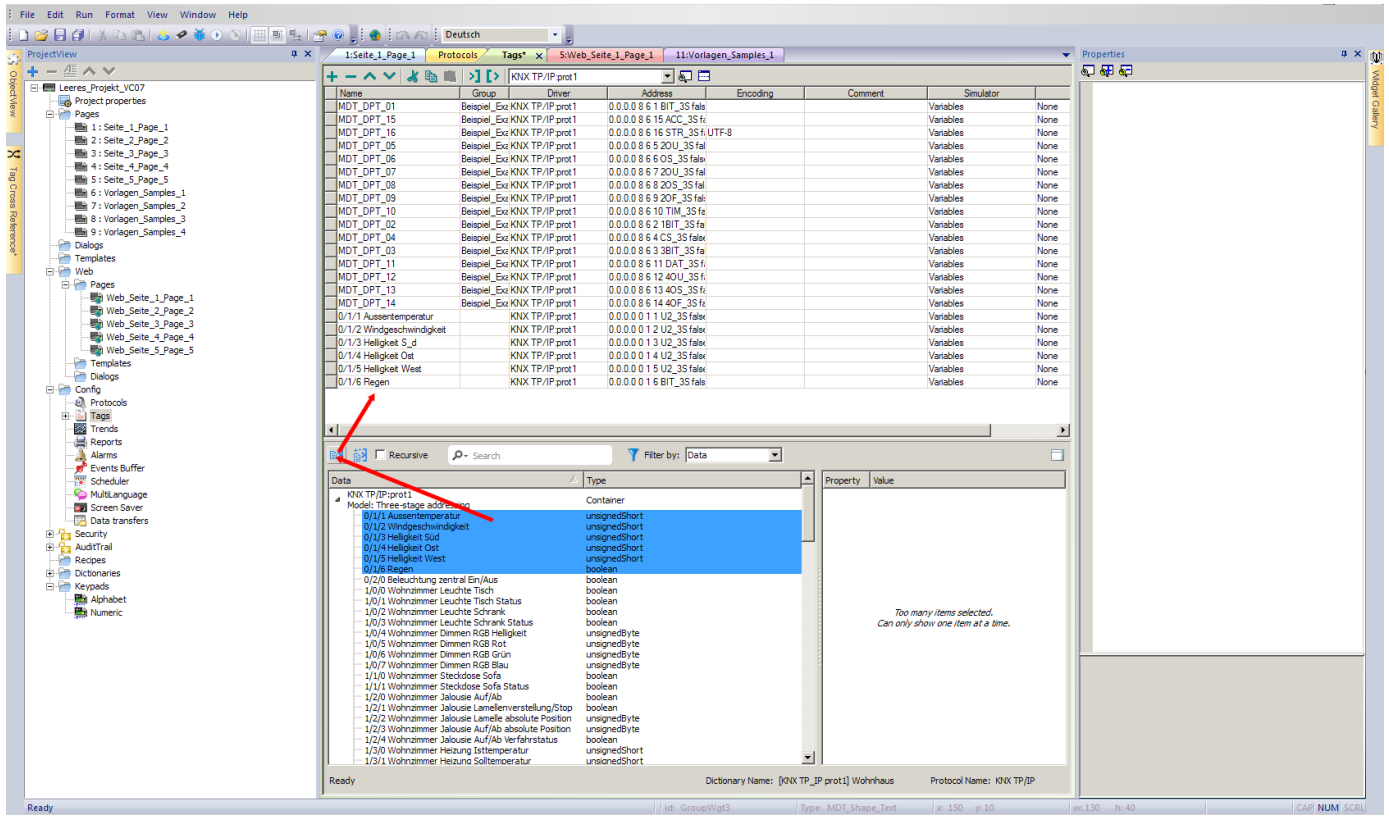
Open the menu **Config/Tags** in the **Project View**. Now press the button **Import Tags** and confirm the following dialog with **OK**.



Now open the exported \*.esf Datei and confirm the Dialog **KNX TP** with **OK**.



Now select the required group addresses and press the button **Import Tag(s)**.



Press the button **Save All** to store your project.

