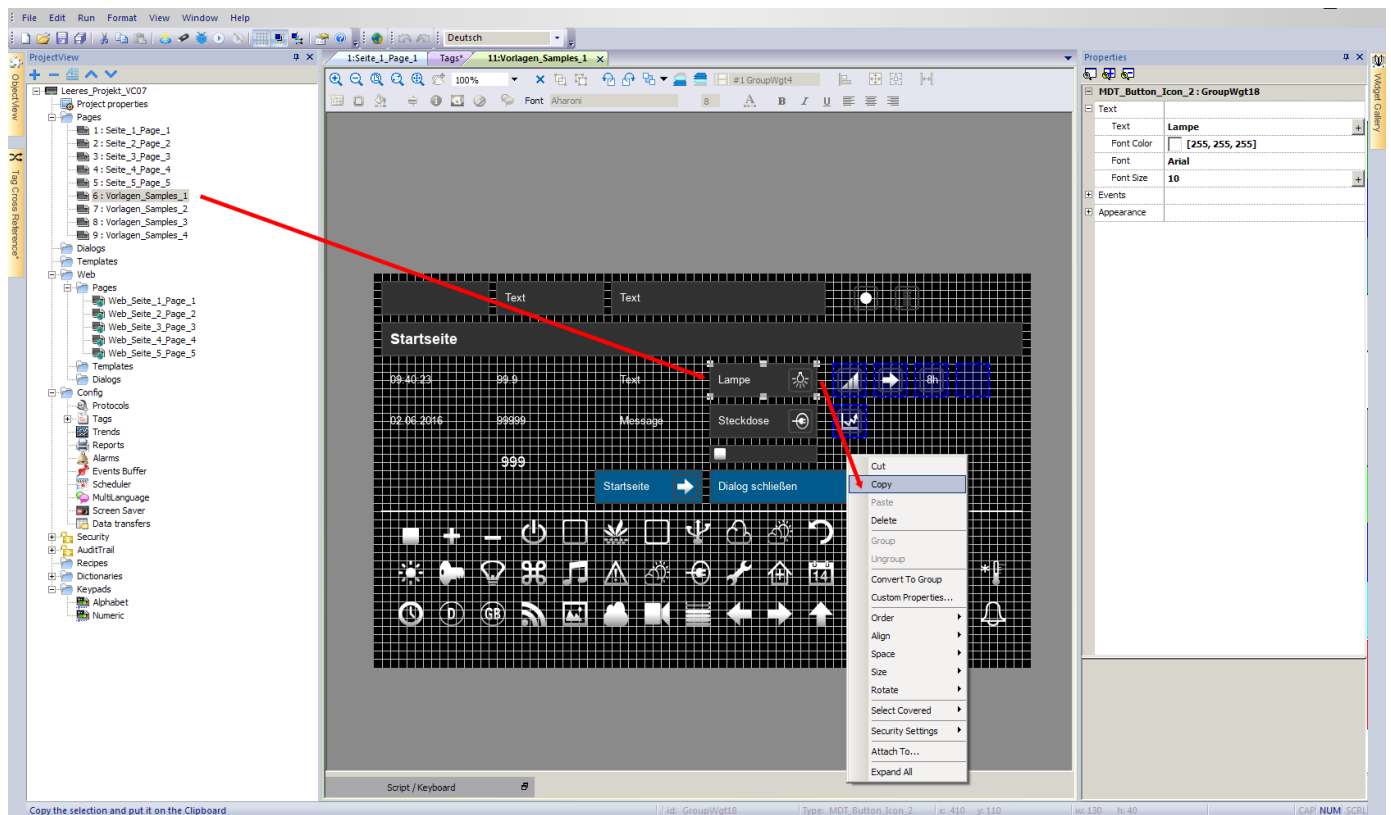


6.0 ATTACH BUTTONS TO GROUP ADDRESSES

Download this project from our homepage and open it with the VisuControl software:
http://www.mdt.de/download/Empty_project_VC07_v1.zip (**VC0701.03 touchpanel**)
http://www.mdt.de/download/Empty_project_VC10_v1.zip (**VC1001.03 touchpanel**)

Import the required group addresses from the ETS (see chapter 4.0) or create them manually (see chapter 5.0).

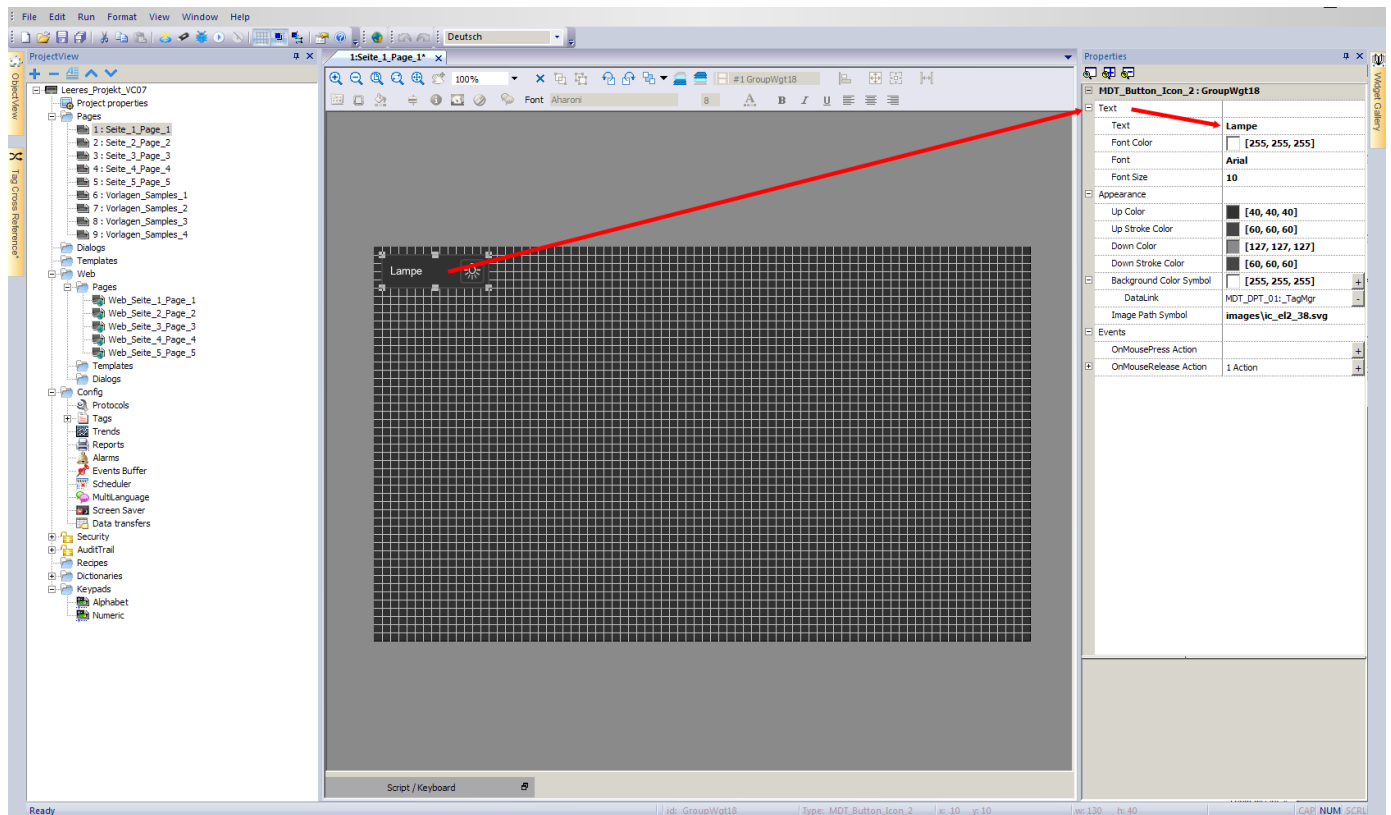
Open the page **Vorlagen1_Samples1** in the **Project View** and copy a button by a right mouse click. Copy this button to the page **Seite1_Page1** and place on the desired position.



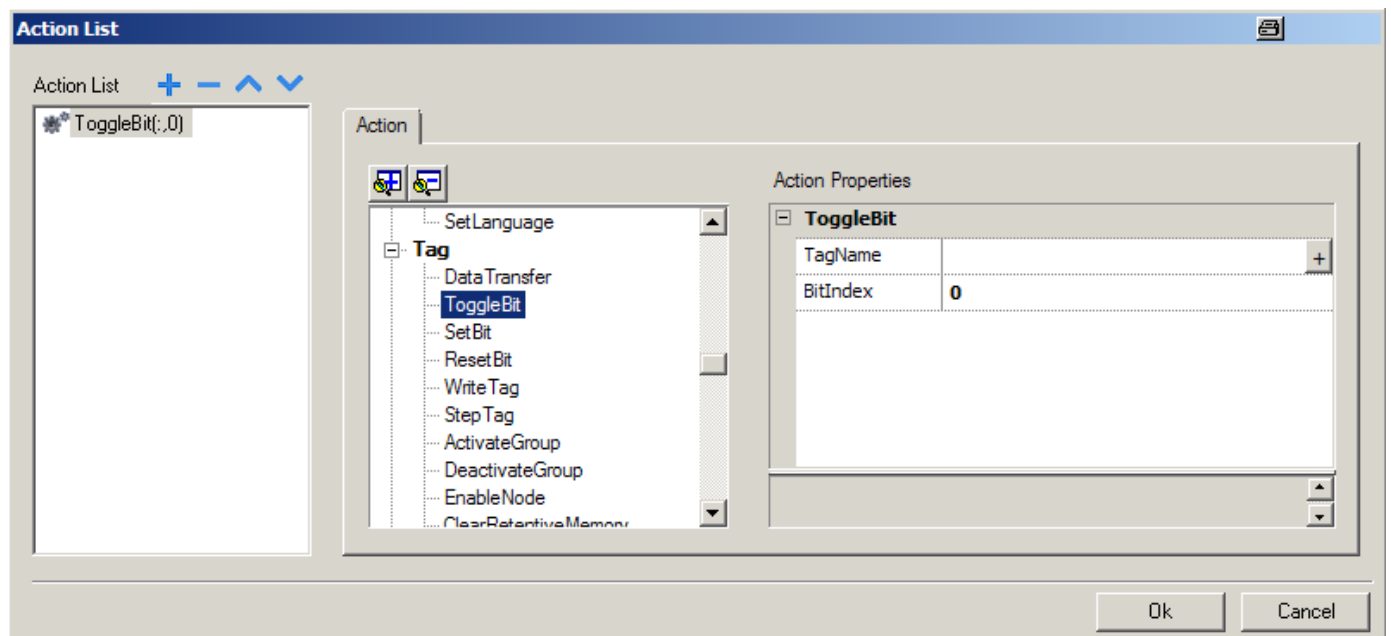
Users of the VisuControl Pro Software are allowed to use the large gallery with buttons, icons and samples. To use this widgets please open the menu **Widget Gallery** at the right side of the screen.

Users of the VisuControl Lite Software can only copy widgets from the sample and demo projects.

Select the inserted button and click inside the **Properties** at the + icon in front of **Text**. Now click right next to the field **Text** to change the label of the button.

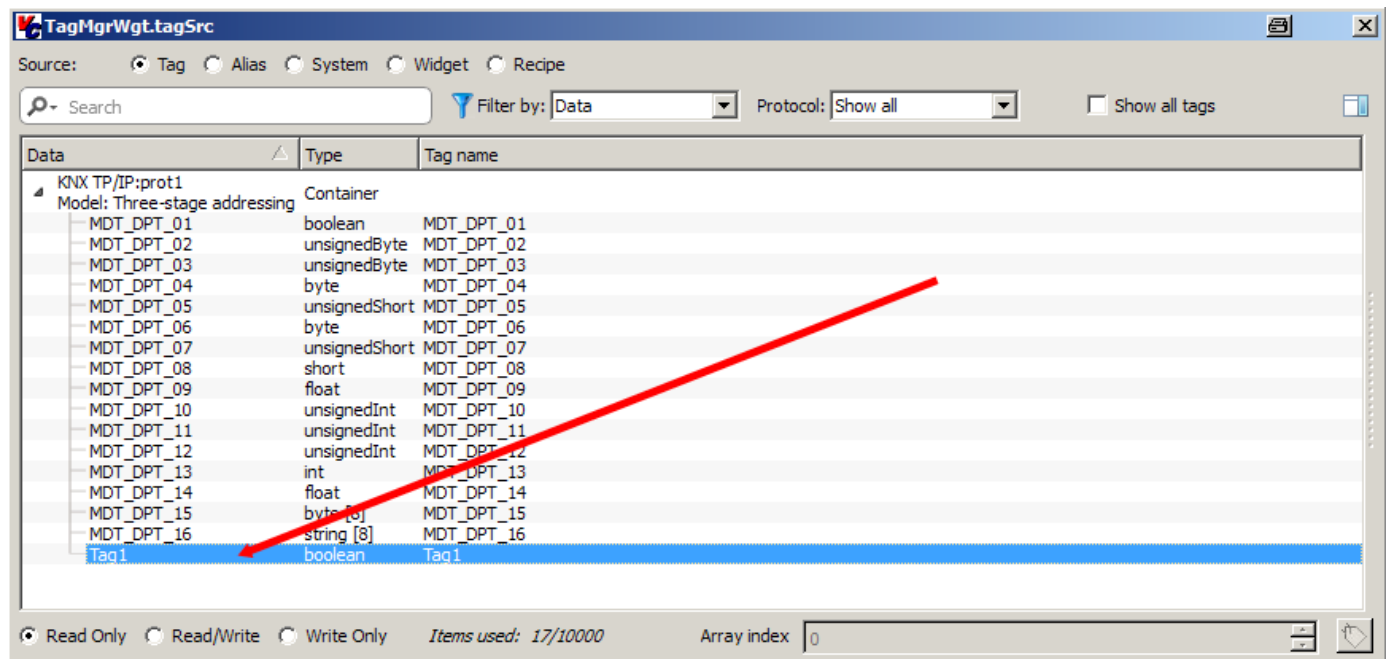
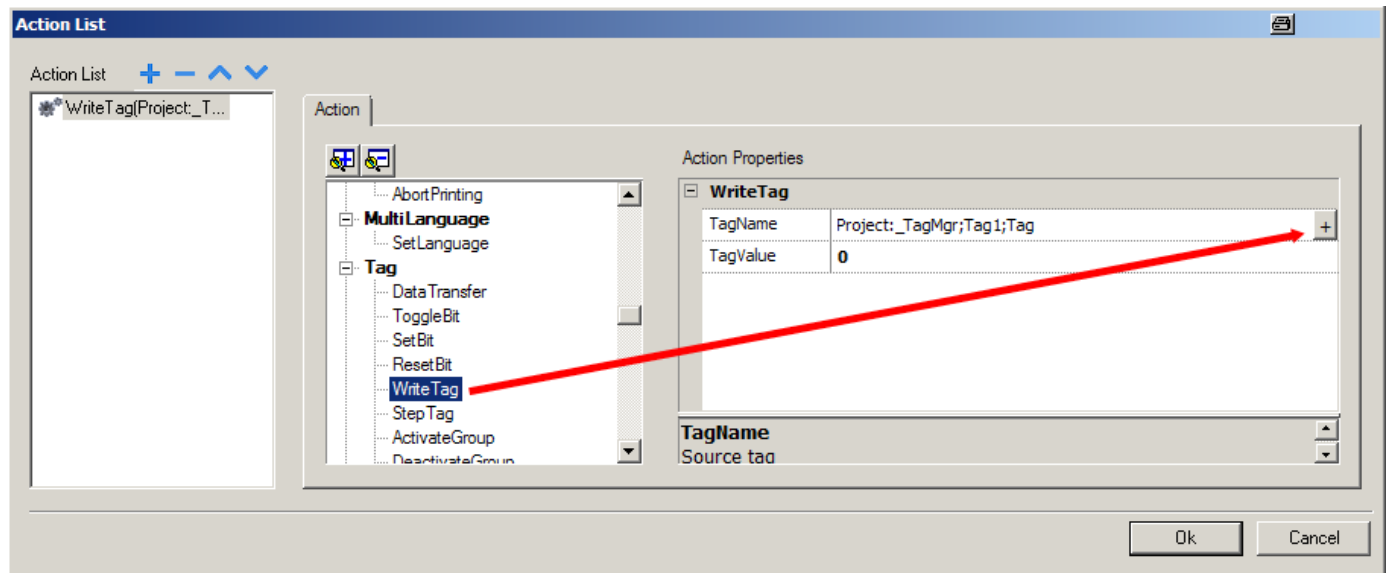


Click inside the **Properties** at the + icon in front of **Events**. Now click right next to the field **OnMouseRelease Action** at the button with an + icon to open the dialog **Action List**.



Choose from the center column at the menu item **Tag** the **WriteTag** instruction. Now enter the value, that should be written to the group address (e.g. „1“ for ON, „0“ for OFF), right next to the field **TagValue**.

In the **Action Properties** click now right next to the field **TagName** at the button with the + icon to open the dialog **TagMgrWgt.tagSrc**.

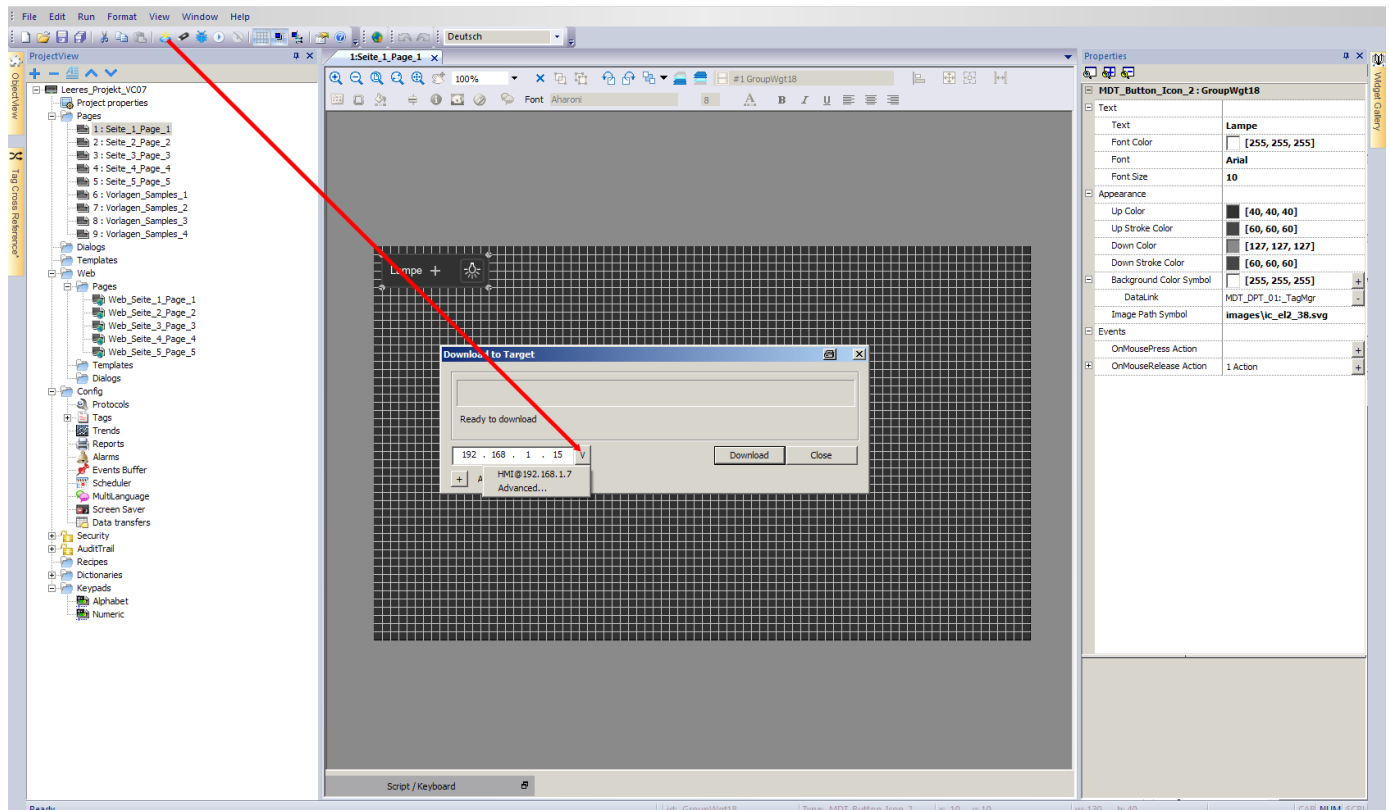


Choose one of your self created group addresses and confirm all open dialogs with **OK**. Press the button **Save All** to store your project.

Now press the button **Download to Target** to load the project on your touchpanel.

In the menu **Download to Target** enter now the IP-address block by block inside the input box. (see chapter 1.0, network settings touchpanel) or press the **V** button to select the touchpanel automatically.

Press the button **Download** and wait until the download process has finished. Now you can check the functionality on the touchpanel.



Schema of the most important **Tag Actions**:

Data Transfer:	Data transfer between two group addresses
ToggleBit:	Toggle group address
Write Tag:	Write a certain value to a group address
StepTag:	Increment or decrement group address step by step
LoadPage:	Load a page inside the project