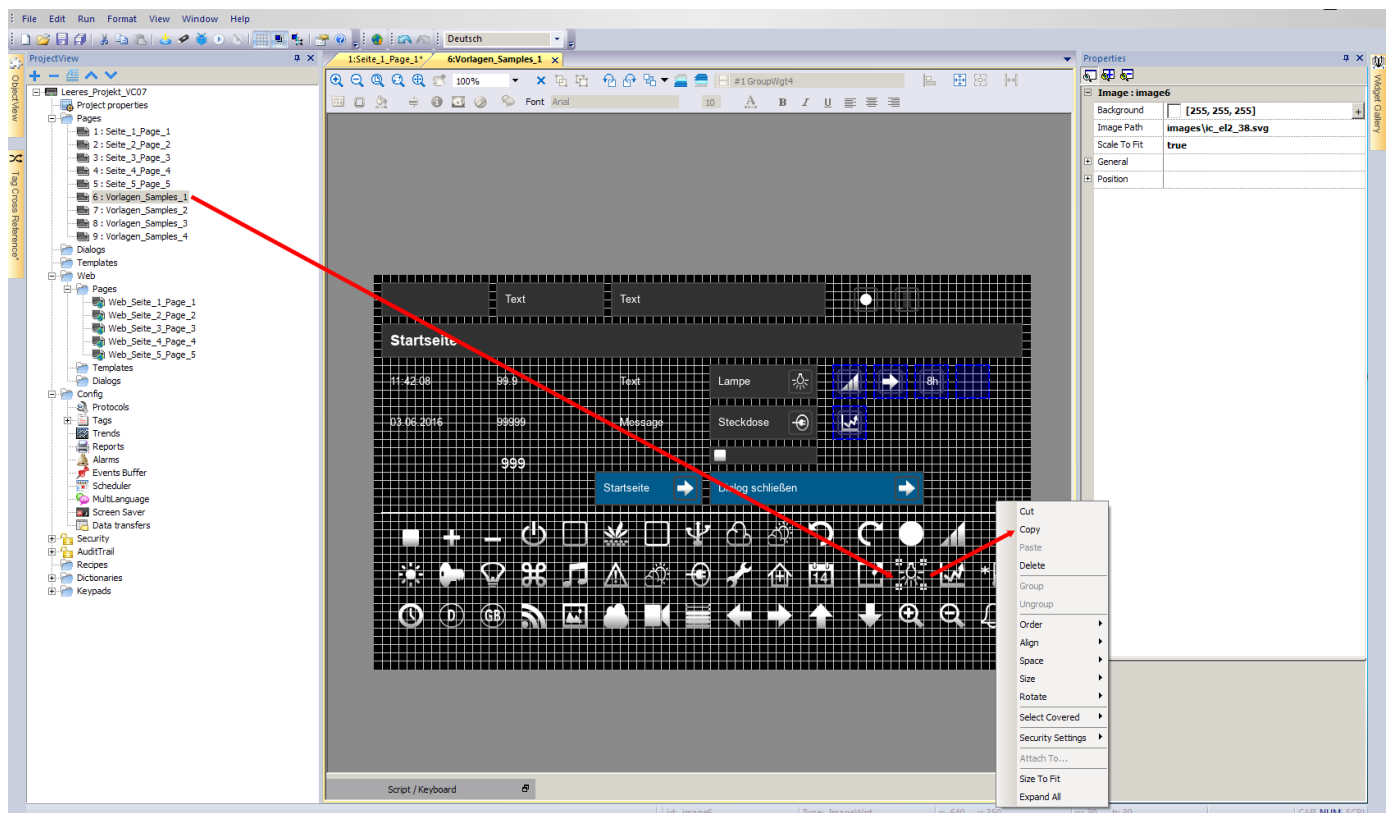


8.0 SWITCH COLOR AFTER GROUP ADDRESSES CHANGES VALUE

Download this project from our homepage and open it with the VisuControl software:
http://www.mdt.de/download/Empty_project_VC07_v1.zip (**VC0701.03 touchpanel**)
http://www.mdt.de/download/Empty_project_VC10_v1.zip (**VC1001.03 touchpanel**)

Import the required group addresses from the ETS (see chapter 4.0) or create them manually (see chapter 5.0).

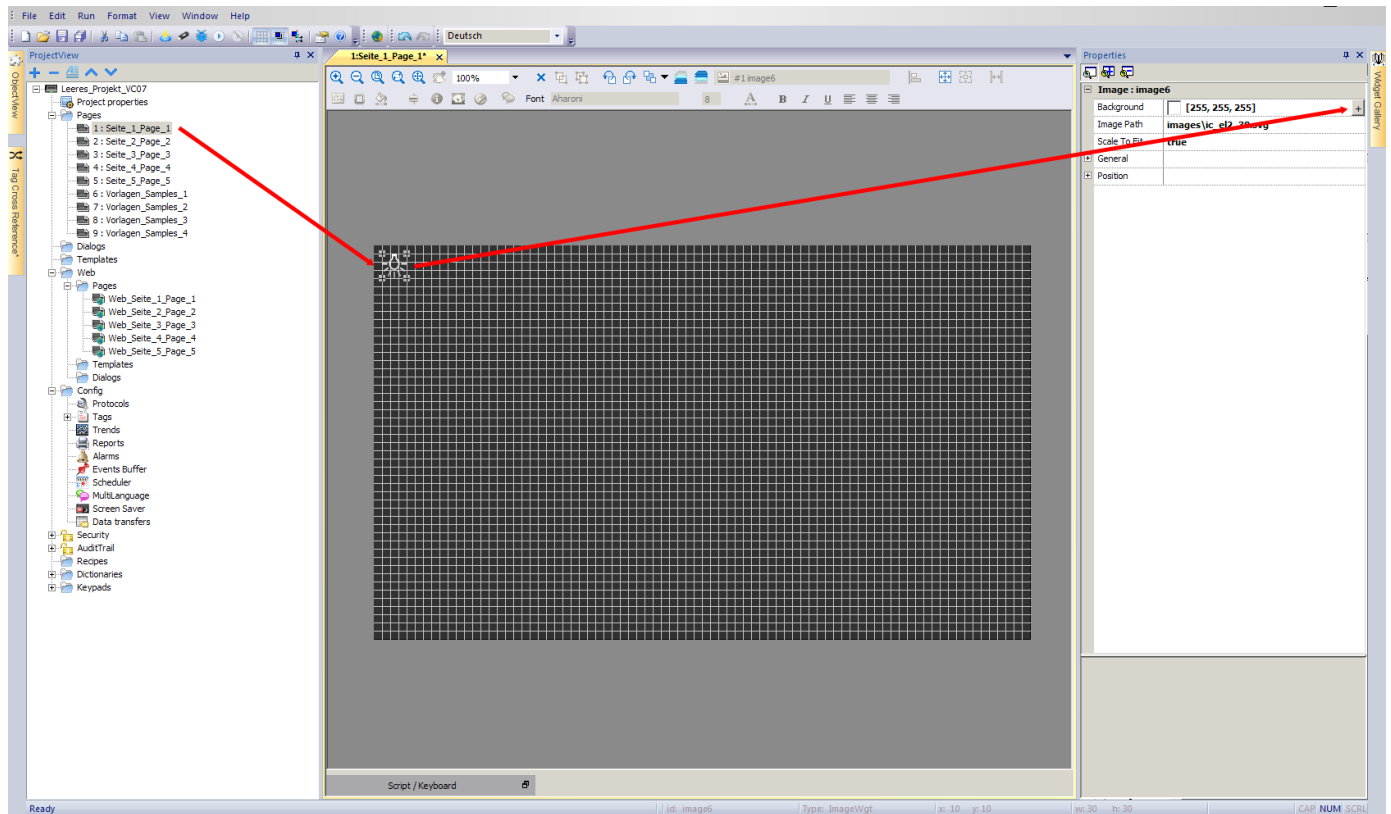
Open the page **Vorlagen1_Samples1** in the **Project View** and copy an icon by a right mouse click. Copy this icon to **Seite1_Page1** and place it on the desired position.



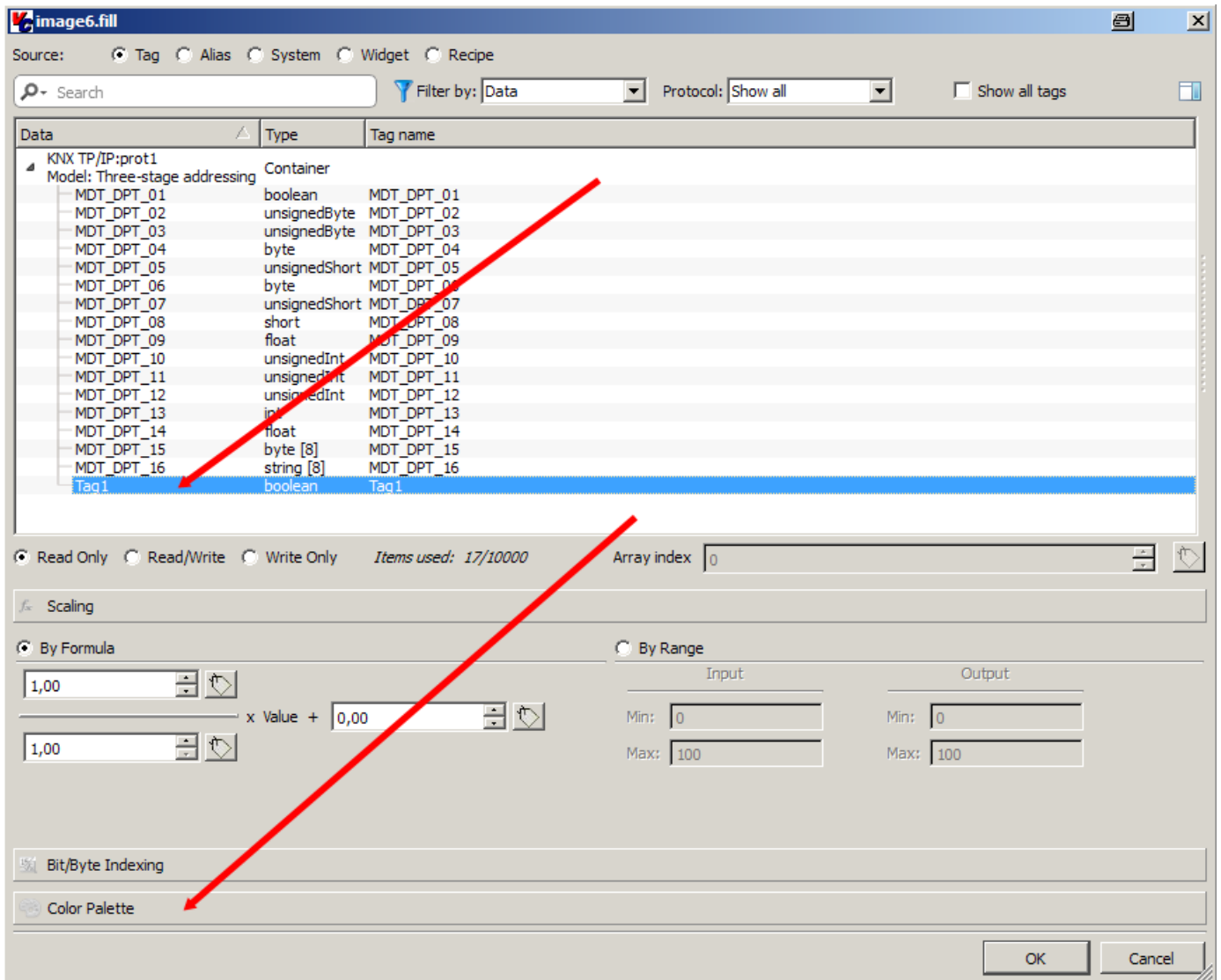
Users of the VisuControl Pro Software are allowed to use the large gallery with buttons, icons and samples. To use this widgets please open the menu **Widget Gallery** at the right side of the screen.

Users of the VisuControl Lite Software can only copy widgets from the sample and demo projects.

Select the inserted icon. Inside the **Properties** click right next to the field **Background** at the button with the **+** icon.

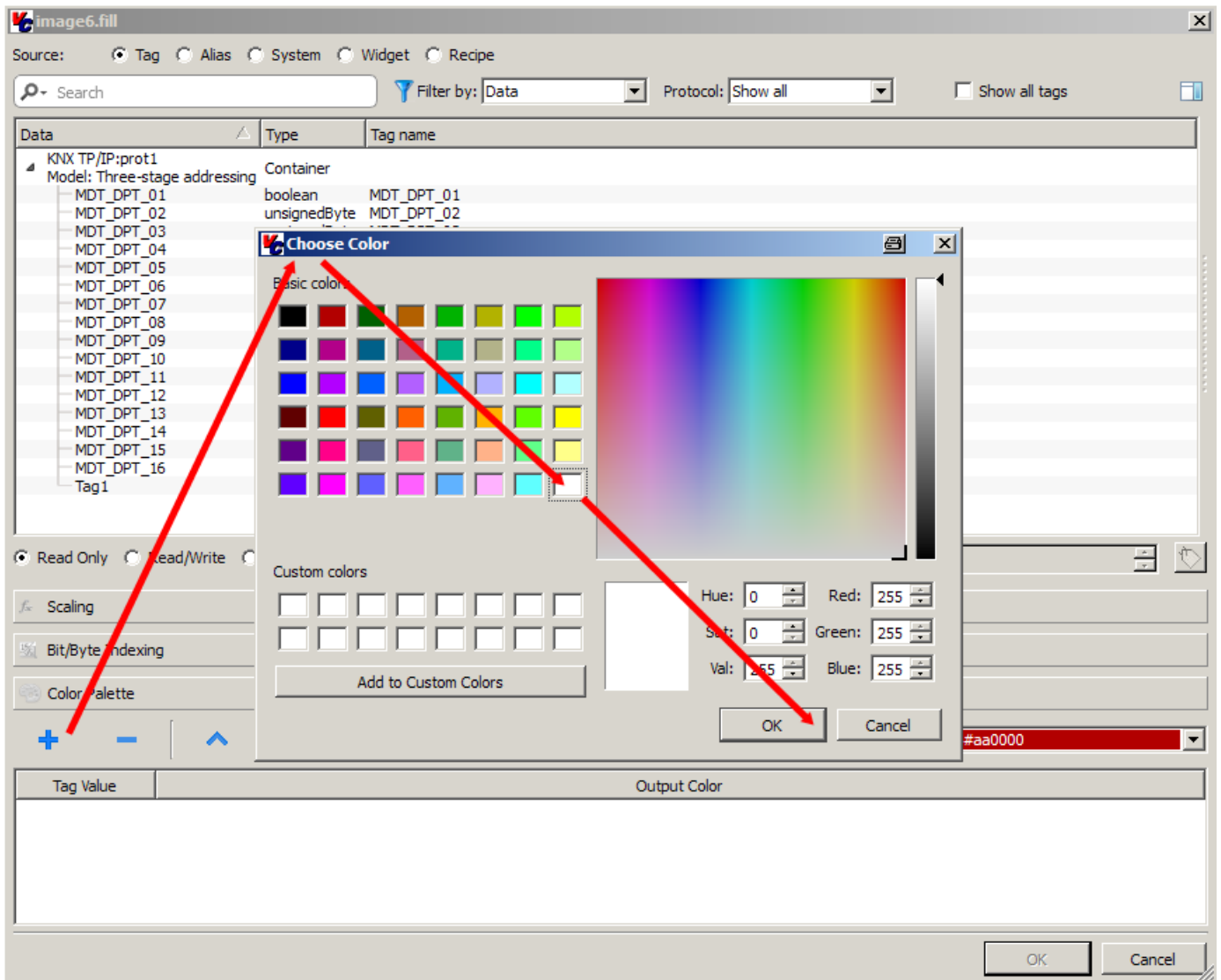


Choose one of your self created group addresses and press the button **Color Palette**.

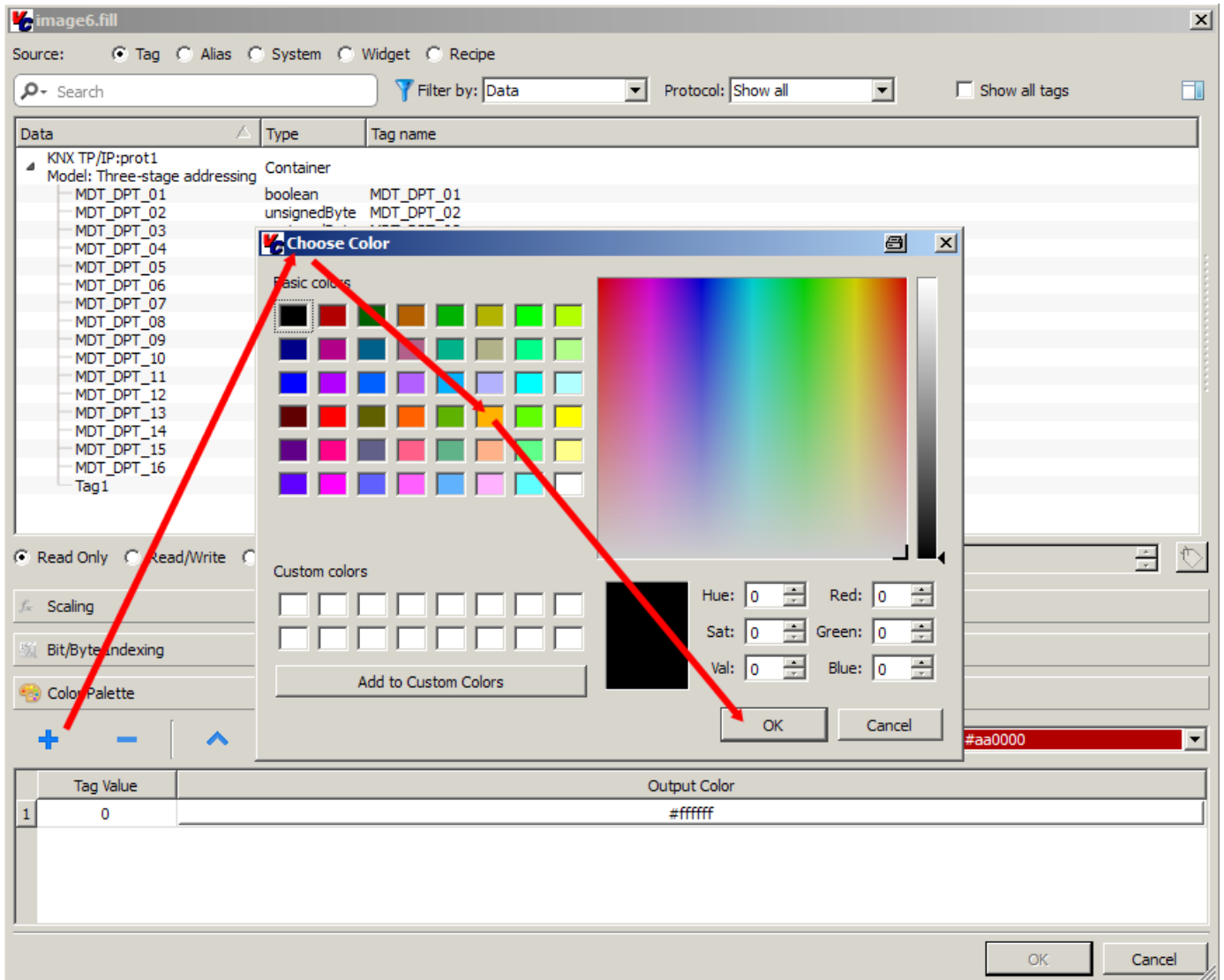


Press the button + to open the dialog **Choose Color**.

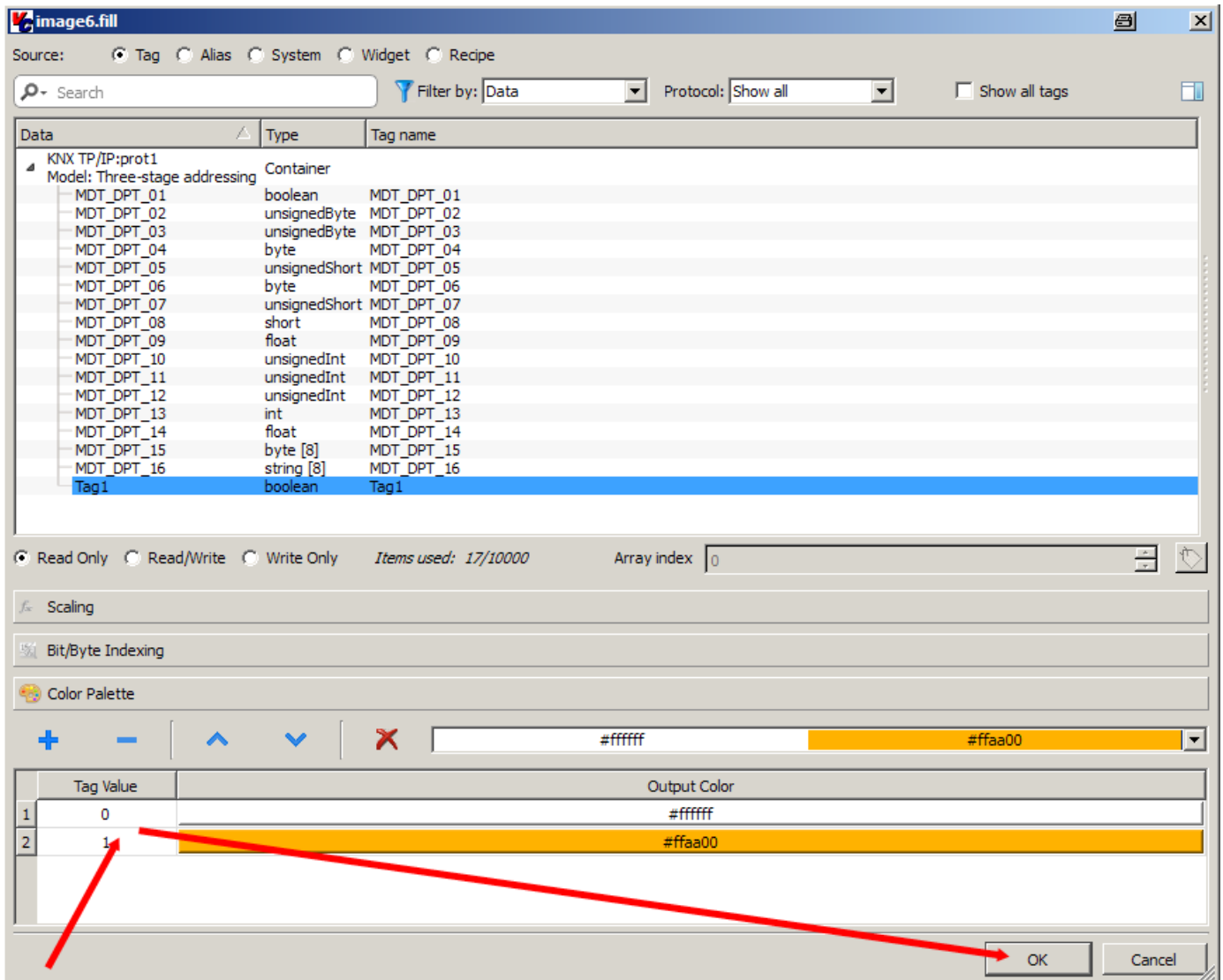
Choose a color for telegram condition **0** and close the dialog **Choose Color** with **OK**.



Press the button + again to open the dialog **Choose Color**.
Choose a color for telegram condition **1** and close the dialog **Choose Color** with **OK**.



After the colors are set for telegram condition **1** and **0**, close the dialog with **OK**.
Press the button **Save All** to store your project.



Now press the button **Download to Target** to load the project on your touchpanel.

In the menu **Download to Target** enter now the IP-address block by block inside the input box. (see chapter 1.0, network settings touchpanel) or press the **V** button to select the touchpanel automatically.

Press the button **Download** and wait until the download process has finished. Now you can check the functionality on the touchpanel.