

## MDT Motion Detector, flush mounted

Version		
SCN-BWM55.01	Motion Detector, 2 pyro detectors and light sensor	Flush mounted, white matt finish
SCN-BWM55.G1	Motion Detector, 2 pyro detectors and light sensor	Flush mounted, white shiny finish

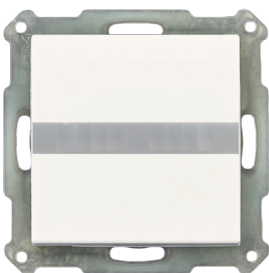
The MDT Motion Detector with light sensor captures the smallest movements with its built in pyro detectors and high resolution lens. After motion detection and below an adjusted brightness value a 1Bit („1“) telegram or 1Byte dimming value (0...100%) is send to the bus. The sensitivity is adjustable in 10 steps. If there is no movement a 1Bit („0“) telegram or 1Byte dimming value (0...100%) is send to the bus after an adjustable follow up time.

Fits 55mm systems:

- BERKER S1, B1, B3, B7 glass
- GIRA Standard 55, E2, Event, Esprit
- JUNG A500, Aplus
- MERTEN M-Smart, M-Arc, M-Plan

The MDT Motion Detector is a flush mounted device for fixed installations in dry rooms. For project design and commissioning of the Motion Detector it is recommended to use the ETS. Please download the application software at [www.mdt.de/downloads.html](http://www.mdt.de/downloads.html)

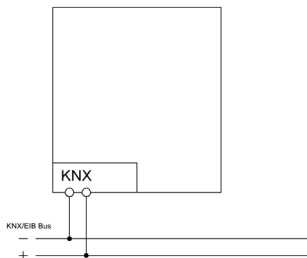
SCN-BWM55.x1



- Production in Germany, certified according to ISO 9001
- Fits 55mm systems:
  - GIRA Standard 55, E2,E22, Event, Esprit
  - BERKER S1, B3, B7
  - JUNG A500, Aplus, Acreation, AS500
  - MERTEN 1M, M-Smart, M-Plan, M-Pure
- Motion detector with light sensor and 2 pyro detectors
- Motion detection angle 180°, covered area 6-10m
- Sensibility adjustable
- Switching function depending on movement and brightness
- Brightness value can be read out
- Master/slave function Adjustable
- Scene functions
- Day/night function, monitoring with messages
- Block and forced setting functions
- Lowerable sensitivity during night and for standby
- Dimensions (W x H x D): 92mm x 92mm x 32
- Integrated bus coupling unit
- 3 years warranty

Technical Data	SCN-BWM55.01 white matt finish	SCN-BWM55.G1 white shiny finish		
Covered area (Diameter)				
Movement *	6-10m	6-10m		
Sensitivity	adjustable in 10 steps	adjustable in 10 steps		
Angular coverage	180°	180°		
Range of light sensor	5 - 1000 Lux	5 - 1000 Lux		
Recommended mounting height	1,05 - 1,10m	1,05 - 1,10m		
Specification KNX interface	TP-256	TP-256		
Available application software	ETS 3/4/5	ETS 3/4/5		
Permitted wire gauge				
KNX busconnection terminal	0,8mm Ø, solid core	0,8mm Ø, solid core		
Power supply	KNX bus	KNX bus		
Power consumption KNX bus typ.	<0,3W	<0,3W		
Operation temperature range	0 to + 45°C	0 to + 45°C		
Enclosure	IP 20	IP 20		
Dimensions (W x H x D)	55mm x 55mm x 32mm	55mm x 55mm x 32mm		

### Exemplary circuit diagram SCN-BWM55.x1



### Compatible to 55mm programs

Manufacturer	Series
Berker	B.7 Glas polarweiss
Berker	B.3 Alu polarweiss
Berker	S.1 polarweiss
Berker	B.1 polarweiss matt
Berker	B.7 Glas Alu
Berker	S.1 polarweiss matt
Gira	Standard 55 reinweiss seidenmatt
Gira	E2 reinweiss seidenmatt
Gira	Esprit Glas mint
Gira	Esprit Glas weiss
Gira	Event Alu
Gira	Event reinweiss matt
Merten	M-Smart polarweiss brillant
Merten	M-Plan polarweiss edelmatt
Merten	M-Arc polarweiss edelmatt
Merten	M-Pure
Merten	M-Plan Echtglas brillantweiss
Merten	M-Smart polarweiss
Jung	AS500 alpinweiss
Jung	A500 alpinweiss
Jung	A500 alpinweiss
Jung	Aplus Alu
Jung	A500 Alu