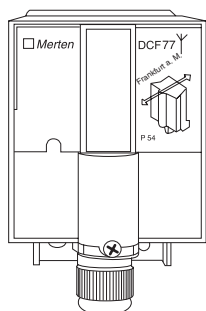


DCF-77 antenna



Article no.
668091

Table of Contents

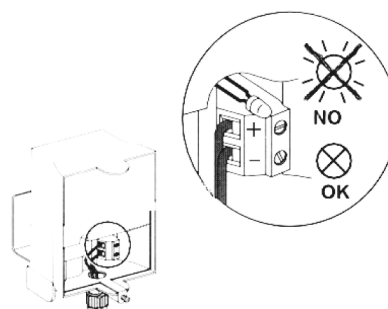
1.	Function	1
2.	Installation	1
3.	Technical Data	2

1. Function

The DCF-77 antenna is connected to the year time switch REG/4/324 DCF-77 (art. no. 677029). Using the antenna, the DCF receiver in the year time switch can receive the DCF-77 time signal via radio to synchronise the clock.

2. Installation

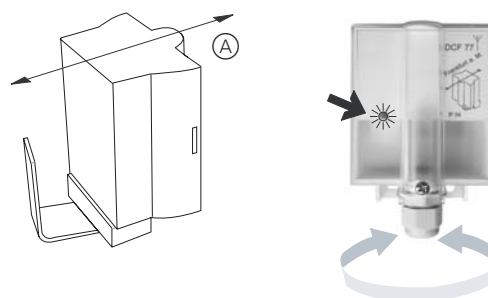
Connecting the radio antenna



Note:

The polarity of the connection must be noted! If the polarity of the connecting cable is incorrect, the yellow LED lights up.

Aligning the radio antenna



Align the radio antenna so that the built-in red LED at the front flashes at intervals of one second.

Ⓐ In the direction of Frankfurt a. M.

3. Technical Data

Permitted ambient temperature:	−20 °C to +70 °C
Type of protection:	IP 54
Sensitivity:	100 µV/m
Receiving range:	approx. 1000 km Frankfurt a. M.
Used for:	Year time switch REG-K/4/324 DCF-77 (art no. 677029)
Connection:	NYM, H03 ... H05 max. 200 m
Polarity:	± Note markings, yellow LED should not light up
Alignment:	Arrow pointing to Frankfurt a. M.
Display:	Red LED must flash at inter- vals of one second
Avoid installing in the vicinity of	<ul style="list-style-type: none"> – Televisions, PC – Switched-mode power supplies – Radio transmitters – Metal objects