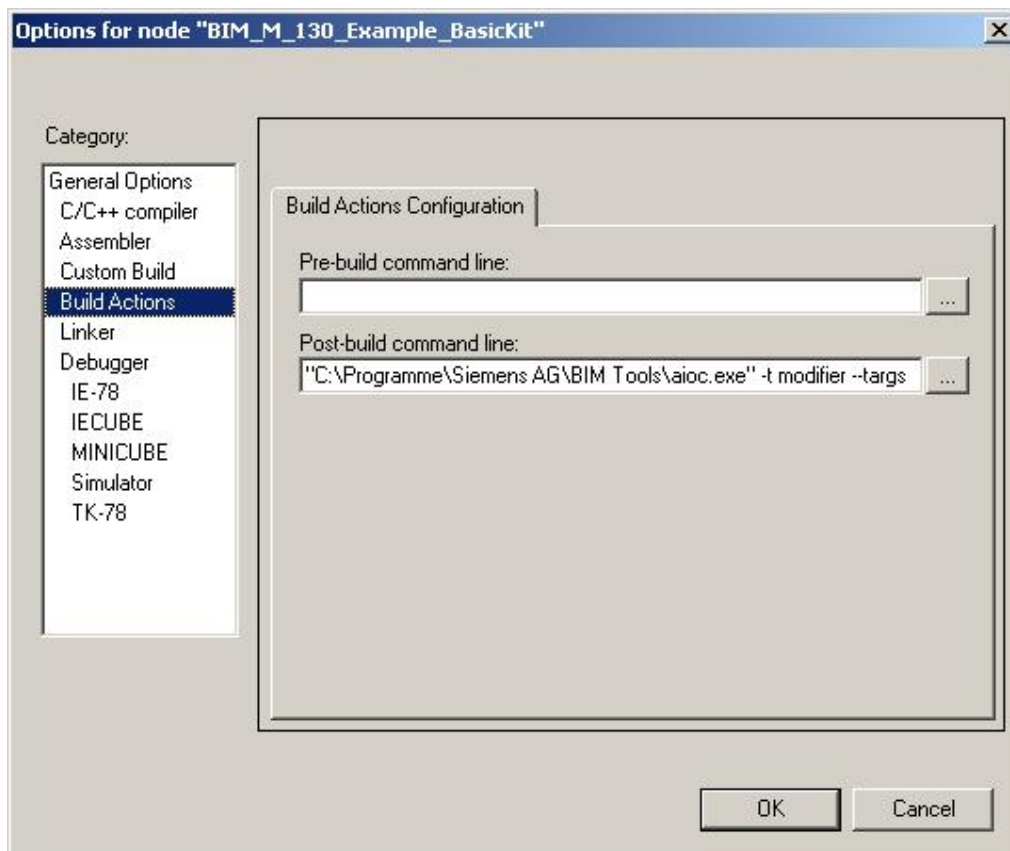


## Application Example for BIM M13x - Evaluation Board v 2.0

In the zip-folder you will find a code example for the BIM M13x EVB and the ETS database entry for devices of the "EIB/KNX Basic Kit" (push button interface, UP562 actor)

- Connect a push button at channel A and channel B of the UP220 pushbutton interface
- Connect all devices to the KNX bus.
- Program the pushbutton interface and the UP actor with the database entry.
- Open the code example with the IAR Embedded Workbench.

Please modify the path to the aioc.exe (BIM-Tools) see below:



- Connect the Minicube2 to the EVB and start the program.
- With the programming button at EVB you can test whether the program is running ( LED turns ON and stays ON).

Function of the application example:

- Pushbutton **B** press -> UP562 actor switch to **ON**
- Let off key -> UP562 actor switch to **OFF**
- Pushbutton **A** push 1x -> UP562 actor starts a toggle modus
- Pushbutton **B** press -> UP562 actor switch ON and OFF with about 2Hz
- Let off key -> UP562 actor stop switching
- Pushbutton **A** push 1x -> UP562 actor stops the toggle modus