

SIEMENS



N 146/03

IP Router Secure

Application program description

Contents

1	Information on IP-Router Secure and on the application program.....	3
1.1	Cyber security disclaimer.....	3
2	Function.....	4
2.1	Security functions of the IP router	4
2.2	Functions of the IP router.....	4
2.3	Topology and routing functions	6
2.4	Response on bus voltage failure and recovery	9
3	Notes on secure data transfer.....	10
4	Structure of the setting options in ETS.....	11
5	Parameter	12
5.1	Parameters of the “General” parameter card	12
5.2	Parameters of the “Routing (IP > TP)” parameter card	13
5.3	Parameters of the “Routing (TP > IP)” parameter card	14
6	Commissioning	17
6.1	Function in factory settings	17
6.2	Location of the device certificate QR code	17
6.3	Commissioning the device	18
6.4	Specifying the name and physical address of the device	18
6.5	Assigning an IP address	19
6.6	Setting up a multicast address	19
6.7	Setting up additional physical addresses.....	20
7	Help in case of errors and problems	21
7.1	Frequently asked questions	21
7.2	Possible errors	21
7.3	Troubleshooting using ETS.....	21
7.4	Checking device certificates.....	21
8	Resetting the device to factory settings.....	22
Index	23

1 Information on IP-Router Secure and on the application program

Product family: System device

Product type: Coupler

Manufacturer: Siemens

Name: IP-Router Secure N 146/03

Order no.: 5WG1146-1AB03

Application: 091A CO IP-Router Secure 0040 02

System requirement:

- At least ETS 5.7.3

1.1 Cyber security disclaimer

Siemens provides a portfolio of products, solutions, systems and services that includes security functions that support the secure operation of plants, systems, machines and networks. In the field of Building Technologies, this includes building automation and control, fire safety, security management as well as physical security systems.

In order to protect plants, systems, machines and networks against cyber threats, it is necessary to implement – and continuously maintain – a holistic, state-of-the-art security concept. Siemens' portfolio only forms one element of such a concept.

You are responsible for preventing unauthorized access to your plants, systems, machines and networks which should only be connected to an enterprise network or the internet if and to the extent such a connection is necessary and only when appropriate security measures (e.g. firewalls and/or network segmentation) are in place. Additionally, Siemens' guidance on appropriate security measures should be taken into account. For additional information, please contact your Siemens sales representative or visit <https://www.siemens.com/global/en/home/company/topic-areas/future-of-manufacturing/industrial-security.html>.

Siemens' portfolio undergoes continuous development to make it more secure. Siemens strongly recommends that updates are applied as soon as they are available and that the latest versions are used. Use of versions that are no longer supported, and failure to apply the latest updates may increase your exposure to cyber threats. Siemens strongly recommends to comply with security advisories on the latest security threats, patches and other related measures, published, among others, under <https://www.siemens.com/cert/en/cert-security-advisories.htm>.

2 Function

2.1 Security functions of the IP router

The IP router supports the “**KNX IP Secure**” security standard and offers the following security functions, among others:

- Encrypted transfer of KNX telegrams between IP routers in the IP network
- Encrypted transfer of KNX telegrams between IP routers and PC software
- Secure access only from authenticated devices
- Secure commissioning via ETS

During secure commissioning via ETS, the device certificate printed onto the device (FDSK = Factory Default Setup Key) is imported and stored for this exact device in the ETS project.



For more information on KNX IP Secure, refer to the ETS software help or go to the following website: <https://support.knx.org>



Alternatively, insecure commissioning without KNX IP Secure is also possible. In this case, the device is insecure and responds like other KNX devices without IP Secure.

2.2 Functions of the IP router

The IP router is a rail-mounted device for installation in distributions. The device uses the KNXnet/IP standard and connects KNX lines to each other via data networks using the internet protocol (IP). At the same time, this device enables bus access from a PC or other data processing devices.

Connections and power supply

The connection to KNX is established using a bus connector terminal (black and red terminals). The connection to the data network (IP via 10 or 100BaseT (depending on the switch)) is established using an RJ45 socket.

The IP router also needs operating voltage in order to operate. The IP router can obtain this operating voltage via the network line using “Power over Ethernet” as per IEEE 802.3af. Alternatively, the operating voltage can be obtained via the second terminal block (white-yellow terminals) from an AC/DC 24 V safety extra low voltage supply or from a bus voltage supply (unchoked voltage, DC 29 V). As soon as the safety extra low voltage supply is connected to the second terminal block, operating voltage is drawn from it.

Remote access

Even if there is no direct network connection between a PC and an IP router, you can use a suitable network infrastructure for remote access to a KNX installation.

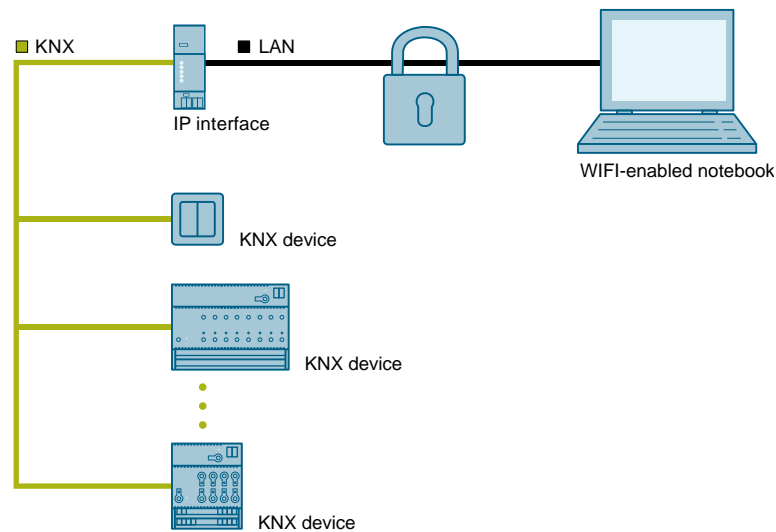


Figure 1: Secure remote access

Additional functions

The IP router has the following attributes:

- Easy to connect to higher-level systems by using the internet protocol (IP)
- Secure access and data transfer via KNXnet/IP Secure
- Direct access to the KNX installation from every point in the IP network (KNXnet/IP tunneling)
- Fast communication between KNX lines, areas and systems (KNXnet/IP routing)
- Communication across buildings and properties (networking properties)
- Filtering and forwarding of telegrams according to
 - Physical address
 - Group address
- LED displays for
 - Operational readiness
 - KNX communication
 - IP communication
- Easy and secure configuration using ETS
- Easy to connect to visualization systems and facility management systems
- Slot for SD card (not in use)

2.3 Topology and routing functions

IP Router Secure can be used as an area or line coupler (KNXnet/IP routing).

In this context, two separate KNX bus lines within a data network are connected to each other data-wise. Galvanically, however, the KNX bus lines remain separated. This makes it possible to operate each bus line electrically independent from the other lines.

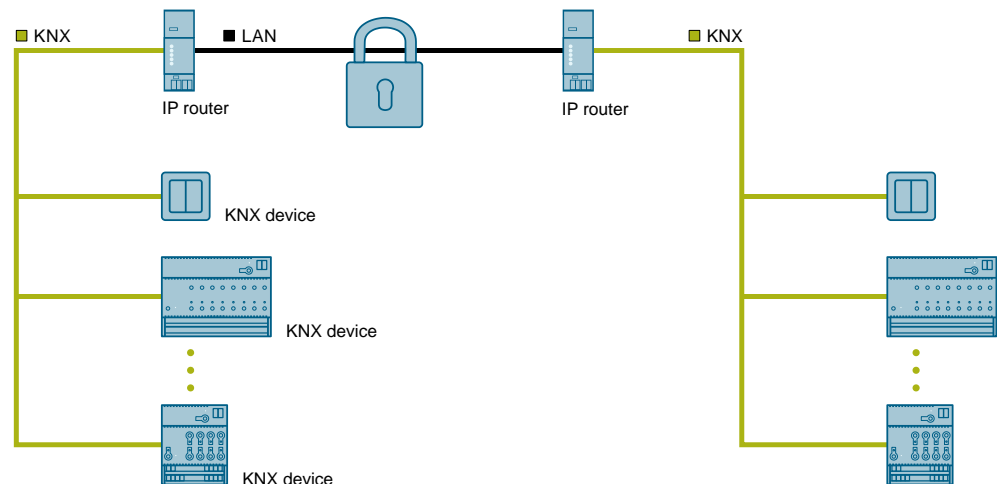


Figure 2: More secure communication during operation

Functions when using the IP router as a line or area coupler

- Fast communication between KNX lines
- Option to extend an existing KNX system beyond the building by using LAN and WAN connections
- Direct forwarding of KNX data to every network user
- KNX remote configuration from every network access point
- Can be used in a new or an existing KNX network
- Reduces the bus load by means of filter tables, which determine which bus telegrams are forwarded to and from the bus line or blocked. The ETS software automatically generates the filter table when the device is configured and commissioned.
- When the physical address is assigned, ETS is used to automatically specify the coupler function (area coupler: main line 1 – 15; line coupler: line 1 – 15).

Requirements for use as a line coupler

- Network components must support IP multicasting.
- Network/LAN routers must be set up in such a way that they forward IP multicast datagrams.
- The IP multicast address 224.0.23.12 has been reserved for KNXnet/IP routing.



When using the router as a world (system) coupler (0.0.0) and full extension of KNX lines incl. line amplifiers, it is no longer possible to reach all line segments due to the routing counter.



When you assign the physical address, make sure that the IP router and line coupler in an installation receive topologically correct physical addresses.

To do this, see the following rules.

Rule for using the IP router as an area coupler

If an IP router is used as an area coupler with physical address x.0.0, no additional IP router may be topologically “underneath” this IP router, i.e. with a physical address x.y.0 (y=1...15).

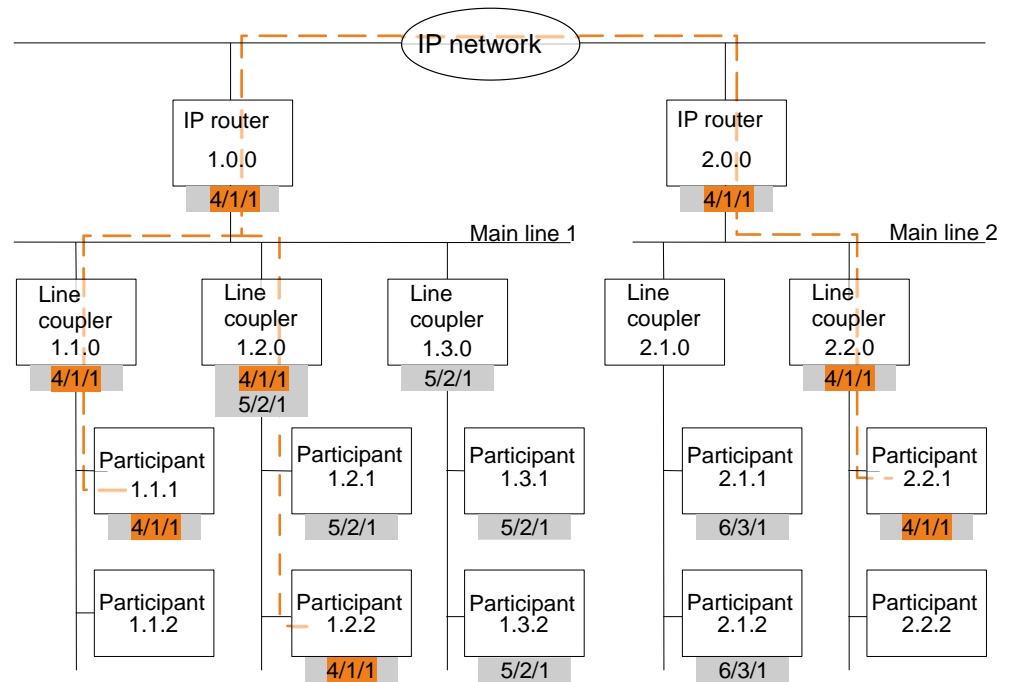


Figure 3: IP-Router Secure as area coupler

x/x/x Group address

x.x.x Physical address (IP address)

— Path of a telegram from the sender to the recipients (example)
Telegrams are only forwarded or received by devices with the same group address.

■ Example: Telegram is only forwarded or received by devices with group address 4/1/1.

Rule for using the IP router as a line coupler

If an IP router is used as a line coupler (e.g. 1.2.0), no IP router with corresponding area coupler address (e.g. 1.0.0) must be used “above” it in the system.

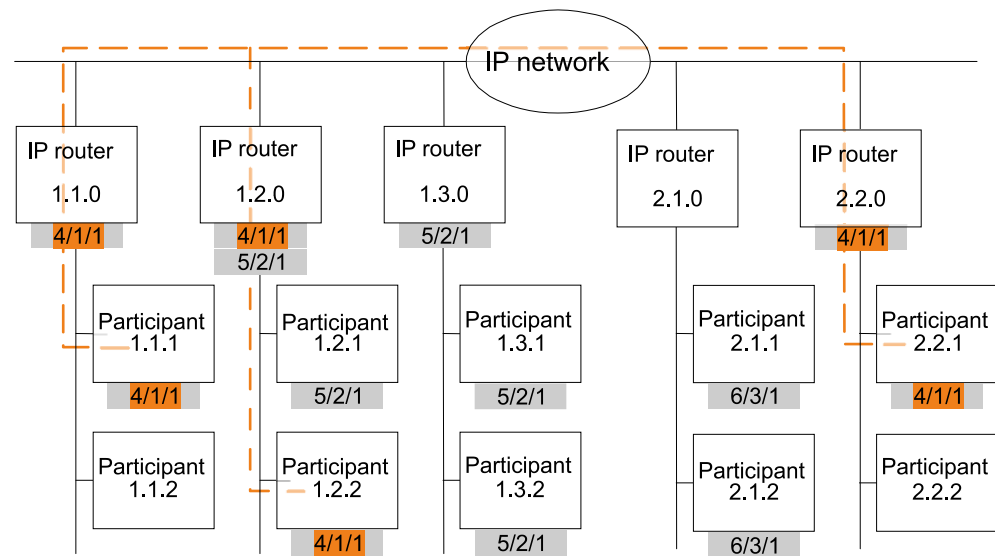


Figure 4: IP-Router Secure as line coupler

x/x/x Group address

x.x.x Physical address (IP address)

— — Path of a telegram from the sender to the recipients (example)

Telegramms are only forwarded or received by devices with the same group address.

Example: Telegram is only forwarded or received by devices with group address 4/1/1.

Rule for using the IP router as an area and line coupler

The IP router can be used as an area or line coupler. The physical address has the structure x.y.0, with x=1...15 and y=1...15.

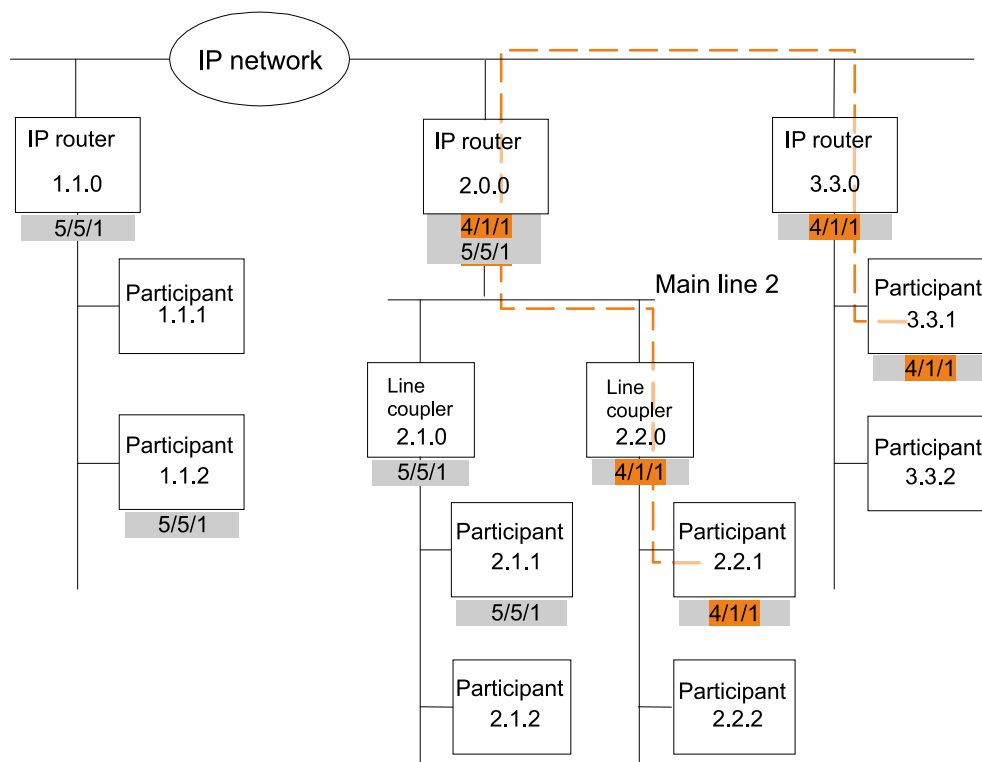


Figure 5: IP-Router Secure as area and line coupler

x/x/x Group address

x.x.x Physical address (IP address)

— Path of a telegram from the sender to the recipients (example)

Telegrams are only forwarded or received by devices with the same group address.

Example: Telegram is only forwarded or received by devices with group address 4/1/1.

2.4 Response on bus voltage failure and recovery

If the IP router detects a bus voltage failure on the bus line, this is stored as an error. In the same way, bus voltage recovery of the bus line is detected and the error is deleted internally. Depending on the configuration, both events are reported to KNXnet/IP.

3 Notes on secure data transfer

- Operate device only in secure mode.
- Only connect the device to the internet in secure mode.

The device is in secure mode if the device has been commissioned using secure commissioning, secure tunneling has been activated, and strong and different passwords are used.

Possible additional security measures include:

- Only operate the device in secure mode in a safe network environment.
- Set up a separate IP network with its own hardware for KNX communication.
- Use user IDs and strong passwords to restrict access to the (KNX) IP network.
- If the device is operated in insecure mode, additionally protect remote access to the device by using a VPN connection.
(A virtual private network (VPN) establishes an encrypted and authorized connection (VPN tunnel) from a remote connection to a network via the internet. This VPN connection enables secure communication protected from eavesdropping between a remote device and the KNX installation.)
- If Wi-Fi is used, change the preset SSID of the wireless access point. Encrypt the Wi-Fi using a secure procedure (such as WPA2 at present).
- Document network settings and give them to the building owner/operator or LAN administrator.
- Coordinate the administration of access rights to this KNXnet/IP device in an IP network with the respective IP network administrator.

Measures after replacing a device in the network

If an IP Router Secure or an IP Interface Secure in secure mode is stolen from a network or replaced due to a defect, secure commissioning has to be repeated for all other devices in the network. To do this, deactivate the “Secure commissioning” option for each device in the settings of the project, active the option again and load the data to the devices again. (There is no need to load the data into the device between deactivation and reactivation.)

Secure commissioning has to be repeated because it is not possible to exclude the possibility that the keys that are in the secure section of the device can be read. Recommissioning has the effect that new keys are generated and the old keys become worthless. The removed device no longer works in the network.

More information on KNX security

For more information on KNX security, including, for example, a security check, refer to the “KNX Secure” section on the KNX website (<http://www.knx.org>).

4 Structure of the setting options in ETS

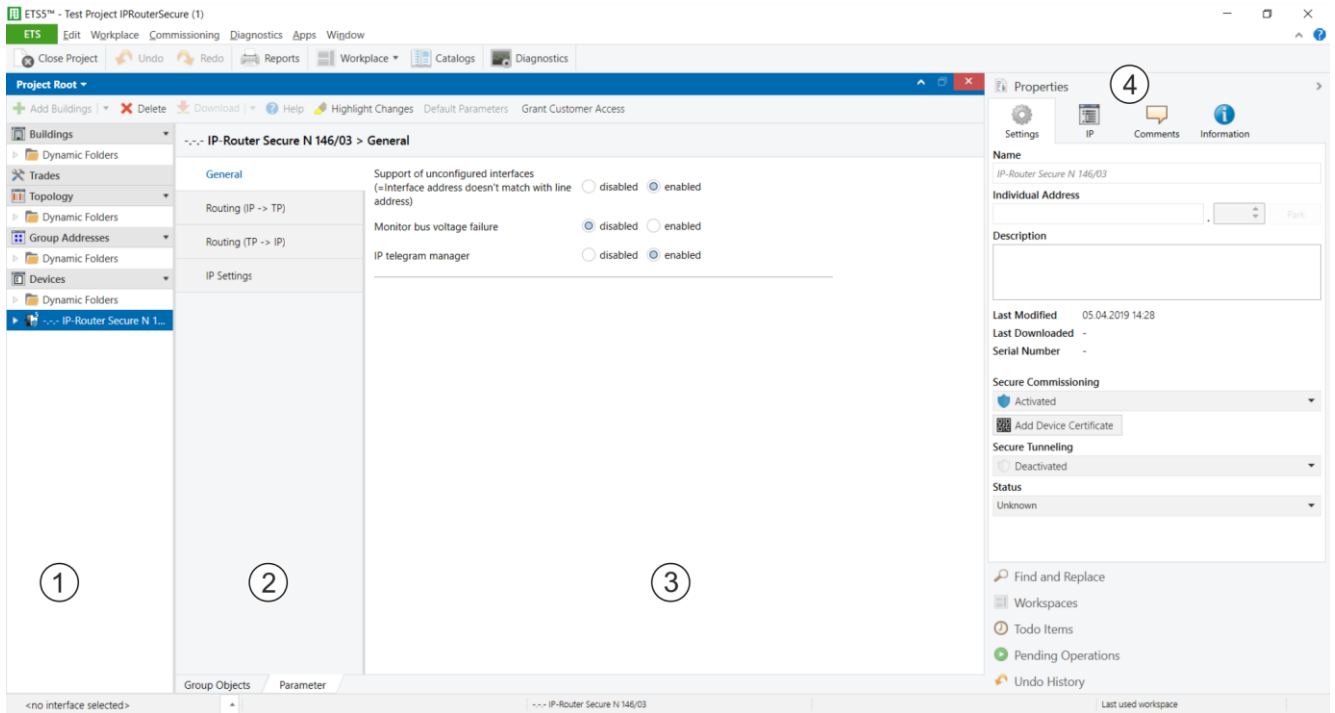


Figure 6: ETS overview

- 1 Tree view of the different sections (e.g. devices, topology and additional physical addresses)
- 2 Listing of parameter cards
- 3 Parameter area. In this area, parameters are set, enabled or disabled.
- 4 "Properties" section (e.g. configuration of IP and security, additional physical addresses)



Parameters that do not match the default settings can be highlighted in yellow by means of the 'Highlight changes' button.

5 Parameter

5.1 Parameters of the “General” parameter card

Parameter	Settings
Support of unconfigured interfaces\n(=Interface address doesn't match with line address)	disabled enabled
Function: This parameter is used to set, e.g. whether interfaces with a topologically incorrect physical address are supported. The following settings are possible: <ul style="list-style-type: none"> disabled: If this is set to 'locked,' interfaces that are not configured or configured incorrectly are not supported. enabled: If this is set to 'enabled,' it is possible e.g. to use interfaces flexibly for configuration in several lines, without a need to adapt the physical address. 	

Parameter	Settings
Monitor bus voltage failure	disabled enabled
Function: This parameter is used to set whether voltage failure and voltage recovery of the bus line are reported via KNXnet/IP. The following settings are possible: <ul style="list-style-type: none"> disabled: Information on bus voltage failure and bus voltage recovery is not forwarded. enabled: Information on bus voltage failure and bus voltage recovery is forwarded via KNXnet/IP. 	

Parameter	Settings
IP telegram manager	disabled enabled
Function: This function is used to optimally use the telegram buffer between IP routers by Siemens and similar devices, thus avoiding any loss of telegrams at high bus loads. Note: This function must be available and activated on all devices used. (On older Siemens devices, this function is active by default.) During mixed operation with other devices that do not have this function, set this parameter to "disabled." The following settings are possible: <ul style="list-style-type: none"> disabled: The number of telegrams is not monitored. Telegrams can be lost. enabled: The telegram rate is limited. Only a certain number of telegrams are sent. 	

5.2 Parameters of the "Routing (IP > TP)" parameter card

Parameter	Settings
Group telegrams of main group 0 to 13	forward all block filter (normal)
Function: This parameter determines the forwarding of telegrams with group addressing from KNXnet/IP to the line. The following settings are possible: <ul style="list-style-type: none"> • forward all: With this setting, all group-oriented telegrams are forwarded. This setting is for testing purposes and has to be reset to "filter (normal)" after successful testing. Otherwise there is an unnecessarily high bus load on all lines. • block: With this setting, all group-oriented telegrams are blocked. This setting is used, e.g. for testing purposes during commissioning. • filter (normal): With this setting, the entry in the filter table is checked before the decision is made as to whether the telegram is to be forwarded to the bus. The filter table automatically generated by ETS is loaded to the device. Note: The filter table must be loaded manually as soon as changes are made to cross-line group addresses. 	

Parameter	Settings
Group telegrams of main group 14 to 31	forward all block filter (normal)
Function: This parameter determines the forwarding of telegrams with group addressing from KNXnet/IP to the line. The following settings are possible: <ul style="list-style-type: none"> • forward all: With this setting, all group-oriented telegrams are forwarded. This setting is used for testing purposes and must be reset to "filter (normal)" after successful testing. Otherwise there is an unnecessarily high bus load on all lines. • block: With this setting, all group-oriented telegrams are blocked. This setting is used, e.g. for testing purposes during commissioning. • filter (normal): With this setting, the entry in the filter table is checked before the decision is made as to whether the telegram is to be forwarded to the bus. The filter table automatically generated by ETS is loaded to the device. Note: The filter table must be loaded manually as soon as changes are made to cross-line group addresses. 	

Parameter	Settings
Individually addressed telegrams	block filter (normal)
Function: This parameter is used to set the filter functions for physically addressed telegrams. The following settings are possible: <ul style="list-style-type: none"> • block: With this setting, physically addressed telegrams are not forwarded. This setting must be used if KNX installations are commissioned in different KNX projects and group-addressed telegrams are still supposed to be transferred (world/system coupler). • filter (normal): With this setting, the telegrams are filtered depending on the physical address of the IP router. Only telegrams whose target is in the next line are forwarded. All other telegrams are not forwarded. 	

Parameter	Settings
Broadcast telegrams	route block
Function: This parameter is used to set the filter functions for broadcast telegrams. Irrespective of this setting, broadcast telegrams are always accepted by the IP router itself. The following settings are possible: <ul style="list-style-type: none"> • route: With this setting, the telegrams are forwarded depending on the physical address of the IP router. Only telegrams whose target is in the next line are forwarded. All other telegrams are not forwarded. • block: With this setting, broadcast telegrams are not forwarded. This setting must be used if KNX installations are commissioned in different KNX projects and group-addressed telegrams are still supposed to be transferred (world/system coupler). 	

5.3 Parameters of the “Routing (TP > IP)” parameter card

Parameter	Settings
Group telegrams of main groups 0 to 13	forward all block filter (normal)
Function: This parameter determines the forwarding of telegrams with group addressing from the line to KNXnet/IP. The following settings are possible: <ul style="list-style-type: none"> • forward all: With this setting, all group-oriented telegrams are forwarded. This setting is used for testing purposes and must be reset to “filter (normal)” after successful testing. Otherwise there is an unnecessarily high bus load on all lines. • block: With this setting, all group-oriented telegrams are blocked. This setting is used, e.g. for testing purposes during commissioning. • filter (normal): With this setting, the entry in the filter table is checked before the decision is made as to whether the telegram is to be forwarded to the bus. The filter table automatically generated by ETS is loaded to the device. Note: The filter table must be loaded manually as soon as changes are made to cross-line group addresses. 	

Parameter	Settings
Group telegrams of main group 14 to 31	forward all block filter (normal)
Function: This parameter determines the forwarding of telegrams with group addressing from the line to KNXnet/IP. The following settings are possible: <ul style="list-style-type: none"> • forward all: With this setting, all group-oriented telegrams are forwarded. This setting is used for testing purposes and must be reset to "filter (normal)" after successful testing. Otherwise there is an unnecessarily high bus load on all lines. • block: With this setting, all group-oriented telegrams are blocked. This setting is used, e.g. for testing purposes during commissioning. • filter (normal): With this setting, the entry in the filter table is checked before the decision is made as to whether the telegram is to be forwarded to the bus. The filter table automatically generated by ETS is loaded to the device. Note: The filter table must be loaded manually as soon as changes are made to cross-line group addresses. 	

Parameter	Settings
Confirm group oriented telegrams	always only if routed
Function: This parameter can be used to set when group telegrams are confirmed by the router. The following settings are possible: <ul style="list-style-type: none"> • always: Group telegrams are always confirmed by the router even if they are not forwarded to KNXnet/IP. • only if routed: Group telegrams are only confirmed if they are forwarded to KNXnet/IP. 	

Parameter	Settings
Individually addressed telegrams	block filter (normal)
Function: This parameter is used to set the filter functions for physically addressed telegrams. The following settings are possible: <ul style="list-style-type: none"> • block: With this setting, physically addressed telegrams are not forwarded. This setting must be used if KNX installations are commissioned in different KNX projects and group-addressed telegrams are still supposed to be transferred (world/system coupler). • filter (normal): With this setting, the telegrams are filtered depending on the physical address of the IP router. Only telegrams whose target is in the next line are forwarded. All other telegrams are not forwarded. 	

Parameter	Settings
Broadcast telegrams	route block
<p>Function:</p> <p>This parameter is used to set the filter functions for broadcast telegrams.</p> <p>Irrespective of this setting, broadcast telegrams are always accepted by the IP router itself.</p> <p>The following settings are possible:</p> <ul style="list-style-type: none">• route: With this setting, the telegrams are forwarded depending on the physical address of the IP router. Only telegrams whose target is in the next line are forwarded. All other telegrams are not forwarded.• block: With this setting, broadcast telegrams are not forwarded. This setting must be used if KNX installations are commissioned in different KNX projects and group-addressed telegrams are still supposed to be transferred (world/system coupler).	

6 Commissioning

6.1 Function in factory settings

The “KNXnet/IP routing” function is already active in the factory settings. If two IP routers are connected to each other via a LAN cable or several IP routers are connected via a hub/switch, bus telegrams are forwarded via the IP routers without further intervention.

In the factory settings, the configuration parameters are set as follows:

- Physical address of the IP router: Setting: “15.15.0” (= FF00 hex)
 - Specifying the name and physical address of the device [→ 18]
- Group telegrams: Respective settings: “filter (normal)”
 - Parameter: Group telegrams of the main groups 0 to 13 (IP – TP) [→ 13]
 - Parameter: Group telegrams of the main groups 0 to 13 (TP– IP) [→ 14]
 - Parameter: Group telegrams of the main groups 14 to 31 (IP – TP) [→ 13]
 - Parameter: Group telegrams of the main groups 14 to 31 (TP– IP) [→ 15]
- Confirmation of forwarded telegrams: Setting: “only if routed”
 - Parameter: Confirm group telegrams (bus - IP) [→ 15]
- Support for unconfigured interfaces: Setting: “enabled”
 - Parameter: Support for unconfigured interfaces [→ 12]
- Filtering of physically addressed telegrams: Setting: “filter (depending on target and coupler address)”
 - Parameter: Physically addressed telegrams (IP– TP) [→ 14]
 - Parameter: Physically addressed telegrams (TP– IP) [→ 15]
- Forwarding “of broadcast telegrams: Setting: “route”
 - Parameter: Broadcast telegrams (IP– TP) [→ 14]
 - Parameter: Broadcast telegrams (TP– IP) [→ 16]
- Monitoring of the bus line on voltage failure: Setting: “disabled”
 - Parameter: Monitoring for bus voltage failure [→ 12]
- IP address assignment: Setting: “Obtain IP address automatically”
 - Assigning an IP address [→ 19]

6.2 Location of the device certificate QR code

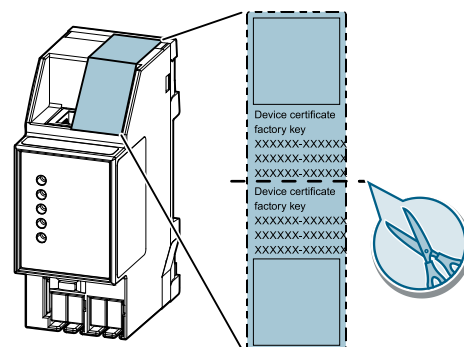


Figure 7: Device certificate

The QR code of the device certificate is affixed to the device as a sticker. There is a duplicate QR code, which can be removed for easy commissioning.

6.3 Commissioning the device

Commissioning the device with “KNX IP Secure”

- ▷ A project is open in ETS.
- 1. Add the device to the project.
 - ⇒ If the project is not yet password-protected, the ‘Set project password’ window appears.
- 2. Enter the password in the ‘New password’ and ‘Confirm password’ input fields, then click ‘OK’ to confirm.
 - ⇒ The ‘Add device certificate’ window appears.
- 3. If you have a webcam, press the ‘...’ button and then scan the QR code sticker on the device.
- 4. If you do not have a webcam or are unable to read the QR code, enter the 6x6-character certificate key on the sticker on the device.
 - ⇒ Once the certificate key has been entered correctly, a green checkmark appears at the end of the line. In addition, the serial numbers and the factory key of the device are displayed.
- 5. Compare the displayed serial number to the serial number on the device.
 - ⇒ If the serial numbers do not match, the certificate key of a different device was entered and transfer of data will not work later on.
- 6. Press ‘OK’ to confirm the entries.
 - ⇒ The device has been added to the project. The security functions of “KNX IP Secure” are activated automatically.

Commission device without “KNX IP Secure”



Commissioning without “KNX IP Secure”

Alternatively, the device can also be commissioned without KNX IP Secure. In this case, the device is insecure and responds like other KNX devices without the KNX IP Secure function.

To commission the device without KNX IP Secure, select the device in the ‘Topology’ or ‘Devices’ section and set the ‘Secure commissioning option’ to ‘Deactivated’ in the ‘Properties’ area of the ‘Settings’ tab.

6.4 Specifying the name and physical address of the device

A unique device name helps recognize and find the device in a KNXnet/IP visualization or within a project in ETS.

- ▷ The device has been added to the project.
- 1. Select the device in the ‘Topology’ or ‘Devices’ section.
- 2. In the ‘Properties’ section, switch to the ‘Settings’ tab.
- 3. In the ‘Name’ input field, enter a unique name of 30 characters maximum for the selected device.
- 4. In the ‘Physical address’ input field, enter the physical address of the device. The address must be as yet unassigned.
 - ⇒ The settings are saved automatically.

6.5 Assigning an IP address



For details on the IP address and additional network settings, contact your local network administrator.

▷ The device has been added to the project.

1. Select the device in the 'Topology' or 'Devices' section.
2. In the 'Properties' section, switch to the 'IP' tab.
3. Make the desired IP address settings.

⇒ The settings are saved automatically.

The following settings are possible:

- **Obtain IP address automatically**

If you select this option, the device is automatically assigned an IP address. This happens either via an DHCP service in the network or, if no DHCP service has been configured, via the device itself (AutoIP). The MAC address required for configuring the DHCP service can be read underneath this setting option or on a sticker on the device.

- **Use fixed IP address**

When this option is selected, additional input fields are displayed in which the desired IP address for the device as well as a subnetwork screen and the standard gateway can be entered.

6.6 Setting up a multicast address

In the same way as for KNX (telegrams with group addresses), IP offers the option to send a message to several recipients at once. This form of IP communication is called "multicast" and the prerequisite for using it is that both sender and recipients are members of the same multicast group and the same multicast address as the target address. Messages are thus forwarded to all devices that use the same multicast address.

Multicast address 224.0.23.12 is reserved specifically for KNXnet/IP.

Multicast addresses 224.0.0.0 to 239.255.255.255 can be used for general access in a network. (For Byte 1 of the IP routing multicast address, only values between 224 and 239 are permissible because KNXnet/IP routing does not work with other values.)

1. In ETS, select the 'Topology' section.
2. In the 'Properties' section, switch to the 'Settings' tab.
3. Enter the desired multicast address in the 'Multicast address' input field.

⇒ The settings are saved automatically.

6.7 Setting up additional physical addresses

For stable device communication via KNXnet/IP tunneling, the device must use a separate physical address for each connection.

These additional addresses must not be identical to the physical address of the device and must not be used by any other bus device either.

When inserting the device into a project in ETS, additional physical addresses are automatically created for the device. These can be changed, if necessary.



For additional information on assigning and changing physical addresses, refer to the ETS software help.

When the entire device is reset to factory settings, the physical addresses are reset: Resetting the device to factory settings [→ 22]

7 Help in case of errors and problems

7.1 Frequently asked questions

Frequently asked questions

For frequently asked questions regarding the product and their solutions, see:
<https://support.industry.siemens.com/cs/ww/en/ps/faq>



7.2 Possible errors

Error	Solution
Device certificates are incorrect	Checking device certificates [→ 21]
Physical addresses have been used multiple times	Check and/or reset physical addresses and re-assign Setting up additional physical addresses [→ 19] Troubleshooting using ETS [→ 21]

Table 1: Possible errors

7.3 Troubleshooting using ETS

These are some of the troubleshooting options in ETS:

'Diagnostics' section

This section lets you check the physical address, group monitor, and bus monitor among other things.

'Reports' section

This area lets you export details on different areas of the project or print them directly.



For more information on ETS, see the online help of the ETS software.

7.4 Checking device certificates

1. Click the 'ETS' button in the menu bar.
2. Select the project from the list.
⇒ Details on the project are shown on the right side.
3. Select the 'Security' tab page.
⇒ A list of device certificates belonging to the project is displayed.

8 Resetting the device to factory settings



NOTICE

Loss of data due to resetting device!

When you reset the device, all parameters and settings entered are deleted.

- Ensure that the device is really supposed to be reset.

Resetting the device to factory settings

- Press the Learn button (at least 20 seconds) until the programming LED starts flashing quickly.
- ⇒ The programming LED flashes for 8 seconds.
- ⇒ The device has been reset to factory settings. All parameter settings have been deleted.

Index

A	
Application.....	3
Area coupler	6
Assigning an IP address.....	19
B	
Bus voltage failure	9
Bus voltage recovery	9
C	
Check certificate.....	21
Check device certificate.....	21
Commissioning	
With KNX IP Secure.....	18
Without KNX IP Secure.....	18
Connections.....	4
D	
Data transfer.....	10
Diagnostics.....	21
E	
Error analysis using ETS	21
ETS user interface.....	11
F	
Factory settings.....	17
Reset device.....	22
FAQ.....	21
Frequently asked questions	21
Functions	4
H	
Help.....	21, 21
I	
IP Secure	4
K	
KNX IP Secure.....	4
L	
Line coupler.....	6
O	
Order number	3
P	
Physical address	
Additional.....	20
Specify	18
Power supply	4
Problem solving	21
Product family.....	3
Product name	3
Product type	3
Q	
QR code.....	17
R	
Remote access	5
Replacing a device	10
Reports	21
Routing function	6
S	
Secure data transfer	10
Security functions	4
Setting up a multicast address	19
Specify device name.....	18
System requirements.....	3
T	
Theft.....	10
Topology	6
Troubleshooting	21

Issued by
Siemens Switzerland Ltd
Smart Infrastructure
Global Headquarters
Theilerstrasse 1a
CH-6300 Zug
+41 58 724 2424
www.siemens.com/buildingtechnologies

© Siemens Switzerland Ltd, 2019
Technical specifications and availability subject to change without notice.