

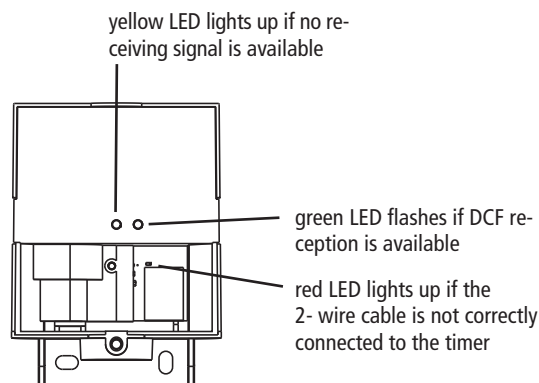
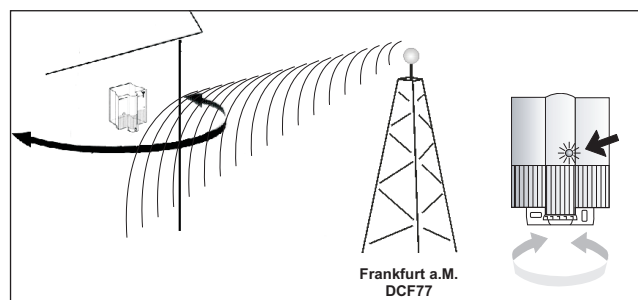
thebentop2 RC-DCF antenna
907 0 410

310 927

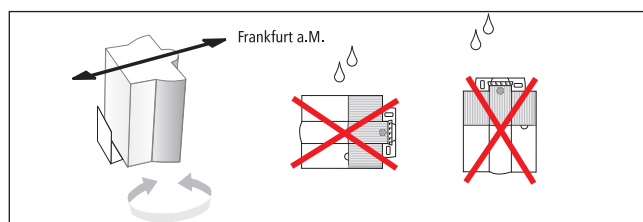
Use

Intelligent DCF antenna with processor-controlled reception. The data are evaluated and sent to the receiver after 3 min. at the earliest. The connection to the receiver is checked every 3 min.

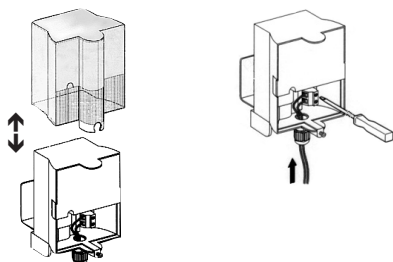
Align top2 RC-DCF antenna



- Align the radio antenna so that the green LED flashes once a second (reception available).



Install top2 RC-DCF antenna



Best reception is achieved by installing on outside of buildings.

- Ensure correct polarity!
- Do not lay cable parallel to antenna!
- Avoid installation in the vicinity of
- electric circuit components
 - Radio transmitters
 - metallic objects
 - television sets

Antenna function only possible if the connected device is supplied with operating voltage.

Technical data

- Power supply: two-pin
- Operating/bus voltage: 18 V/5 mA (**protective low voltage**)
- Permissible ambient temperature: $-20\text{ °C} \dots +70\text{ °C}$
- Protection class: III in accordance with EN 60730-1 for designated installation
- Protection rating: IP 54 in accordance with EN 60529
- Cable types: Sheathed cable: NYM (3 x 1.5 mm²)
(max. 100 m) MCA cable: PYCYM, YCY (2 x 2 x 0.8 mm²)
Telephone cable: J-Y(St)Y (2 x 2 x 0.8 mm²)
Bell wire: YR
- Sensitivity: 100 µV/m
- Reception area: 1500 km around Frankfurt/Main
- Reception duration: minimum 3 minutes
- Use: only for devices in top2 range
- Number of participants: maximum of 10 participants per antenna

Service address/ Hotline

Service address

Theben AG
Hohenbergstr. 32
72401 Haigerloch
GERMANY
Telephone +49 (0) 74 74 6 92 0
Fax: +49 (0) 74 74/6 92-150

Hotline

Telephone +49 (0) 74 74 6 92 369
Fax +49 (0) 74 74 6 92 207
hotline@theben.de
Addresses, telephone numbers etc.
www.theben.de