

Motion detector

SPHINX 331 S KNX 1079215

SPHINX 332 S KNX 1079216

1. Designated use

SPHINX 331 S KNX is a 1-channel motion detector for brightness-dependent and movement-dependent control of lighting. SPHINX 332 S KNX is a 2-channel motion detector for brightness-dependent and movement-dependent control, e.g. of lighting and ventilation systems. Both devices are used in the office and in hallway areas. The devices are suitable for use in dry areas.

The careful planning and positioning of the motion detector is important as sources of interference can cause unintentional switching and/or screening off of the detection area, for example through

- moving plants or animals
- a draught (open window)
- direct sunlight or artificial light
- reflecting surfaces such as mirrors, water surfaces, etc.
- Heat sources from ventilators, fans or heating elements, etc.
- Lights, TV and hi-fi devices, computers or radios
- Separating walls

Additional measures are required for applications where individual switching errors over longer periods of time are not permissible (e.g. use of a time switch to disable the motion detector at certain times) in order to minimise the effect of these undesired – but generally unavoidable with motion detectors – switching errors.

The ETS (engineering tool) enables application programs to be selected, specific parameters and addresses to be assigned and transferred to the device.

The device is designed for installation on DIN top hat rails (in accordance with EN 60715) and conforms with EN 60669-2-1. Only to be used in closed, dry rooms.

2. Safety instructions



WARNING

Danger of death through electric shock or fire!

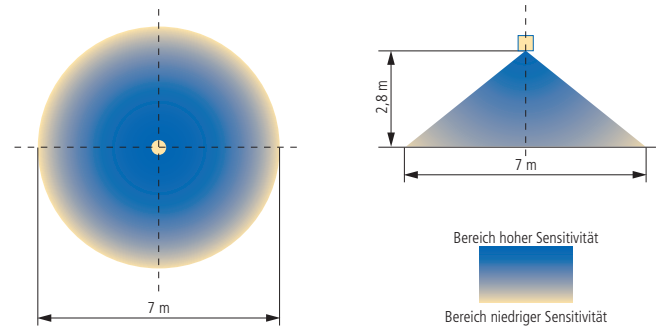
- Installation should only be performed by an electrician!

Please note the provisions of EN 50428 for switches or similar installation material for use in building systems technology with regard to the correct installation of bus lines and device start-up procedure.

Tampering with, or making modifications to, the device will invalidate the guarantee.

3. Detection range

Max. 7 m diameter with 2.8 m installation height



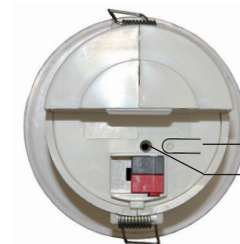
4. Bus connection

- Connect bus cable to the bus terminal (red + / black –).
- Attach bus terminal.
- Close cover.
- Tighten the enclosed screws.



5. Programming physical address

- Press programming key 1 (the programming LED 2 lights up). SPHINX 331 S KNX and SPHINX 332 S KNX are in programming mode.

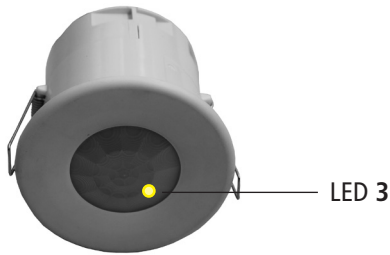


Programming key 1

Programming LED 2

Additional option with SPHINX 332 S KNX

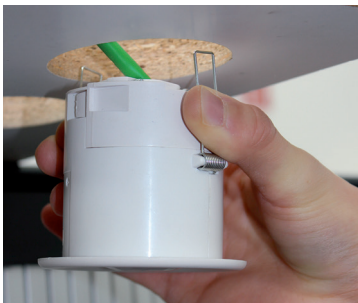
- Trace a magnet along the underside of the device. Programming LED 2 and LED 3 light up.
SPHINX 332 S KNX is in programming mode.



6. Installation

- for ceiling mounting
- for an installation opening of diameter 68 mm

- Drill round opening of 68 mm in the ceiling.
 - Fold springs upwards and secure.
- ⚠ CAUTION: The springs are under tension and could injure your fingers.
- Push device through the ceiling opening and release the springs. The device clicks in.



Dismantling

- Turn device and **carefully** remove from the ceiling.
- ⚠ CAUTION: Secure the springs as they are under tension and could injure your fingers when releasing.

7. Start-up

For detailed functional descriptions please use the manual (also at www.theben.de).

8. Technical data

SPHINX 331 S KNX/SPHINX 332 S KNX

- Operating voltage: bus voltage KNX
- Current consumption KNX bus: ≤ 10 mA
- Switch-on range brightness: 0–700 lx with correction factor
0–5600 Lux
- Lighting time delay: 1 s–120 min
- Detection range: approx. 7 m diameter at approx.
2.8 m height
- Detection angle: approx. 110°
- Permissible ambient temperature: –5 °C to +45 °C
- Bus interface module (BCU): integrated
- Installation opening: 68 mm
- Protection class: III
- Protection rating: IP 40 in accordance with EN 60529
- Device standard: EN 60669-2-1, EN 50428
- Pollution level: 2

The ETS database can be found at www.theben.de.
Please refer to the KNX Handbook for detailed functional descriptions.

Service address

Theben AG
Hohenbergstr. 32
72401 Haigerloch
GERMANY
Phone +49 7474 692-0
Fax +49 7474 692-150

Hotline

Phone +49 7474 692-369
Fax +49 7474 692-207
hotline@theben.de

Addresses, telephone numbers etc.
www.theben.de