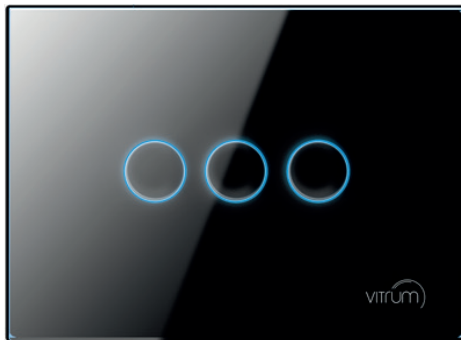


Vitrum III EU KNX Series

Datasheet

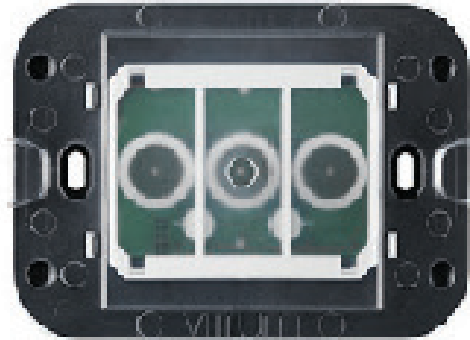
AESTHETIC COMPONENT

cod. 11E03000.90001.00



ELECTRONIC MODULE

cod. 0KE030020



GLASS COLLECTION

SCULPTED GLASS VERSION
See below for other materials



MAIN FEATURES

- Wall mounting embedded three channels on-off
- Touch control based on high sensitive capacitive technology
- Hand proximity detection (back light fade up before touching capacitive button)
- Acoustic feedback signal when button touched
- RGB back light on button
- Back light colors available: yellow (ON default), Blue (OFF default), red (alert message), cyan (association mode), white (programmable).
- Access to local simplified setup menu through two program button reachable without aesthetic component mounted

MECHANICAL AND AESTHETICS SPECIFICATIONS

» Aesthetic component- GLASS VERSION

- Dimensions: 126x95 mm
- Thickness (visible outside wall): 8mm
- Button diameter: 16 mm
- Weight: 130 g.
- Back light diameter: 18 mm

» Electronic module

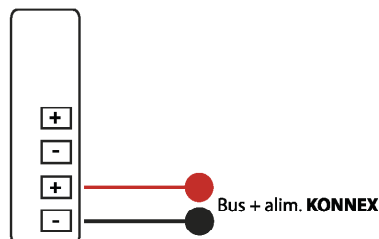
- Fitting wall or plasterboard 3 modules Box (503)
- Dimensions: 115x84 mm
- Weight: 132 g

TECHNICAL SPECIFICATIONS

» General info

- Power feed: 230V ac - 50 Hz/60Hz
- Maximum load for each channel: -Resistive load: 2400W
-Capacitive and Inductive load: 1200VA
- Total maximum load for device: 4800W
- IP Class: IP 20
- Storage temperature: -40°/+55C°
- Storage humidity: 10% - 93%
- Operating temperature: -10C°/+45°C
- Operating humidity: 20% - 90%
- Power consumption: < 1,5W

INSTALLATION:



TECHNICAL SPECIFICATIONS (continue)

- Built in compliant with: **LVD** directive 2006/95/EC
- IEC/EN/UL 60669-1 IEC/EN/UL60669-2-1
- **E.M.C.:** directive 2004/108/EC
- R&TTE: 1999/5/CE
- **ROHS2** directive/2011/65/EU
- **WEEE** 2002/96/EC

» Hardware

- Maximum in rush current: 165A for max 20 msec
- Lighting latching type relays
- Power mosfet technology
- Short-circuit protection
- Over temperature protection
- Lighting latching type relays

VITRUM DESIGN

The obsession for details and the harmony of its aesthetic became the true sign for Vitrum inimitable design.

Vitrum switches your home with its essential components, available in several shapes and materials:

GLASS COLLECTION

WOOD COLLECTION

STONE COLLECTION

TECH COLLECTION

S E S E



Think Simple s.r.l.

Size, color tone and characteristics of the products shown are only indicative and do not constitute any contractual bond. Think Simple s.r.l. reserves the right to modify its products at any time and without notice in order to better their quality and functionality.

Specification are subject to changes for improvement without advance notice. Proprietary data, drawings, company confidential all right reserved.

29/10/2015

Rev 1.1

2/2