

# KNX IP Interface 740 *wireless*

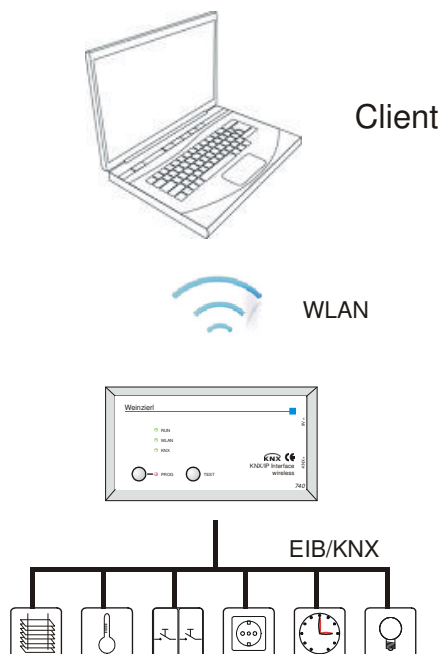
## Operating and installation manual

### Application

The KNX IP Interface 740 *wireless* is a WLAN interface to the KNX/EIB bus. It can be used instead of a USB or wire-bound IP interface, e.g. for ETS3. Utilising the wireless technology the installer can now move unhindered throughout the building. The KNX IP Interface 740 *wireless* contains an integrated Access Point which provides the direct connection to the device via a WLAN network. It has an external 9V power supply.



This device functions according to the KNXnet/IP specification. It is compatible with ETS from version 3.0c.

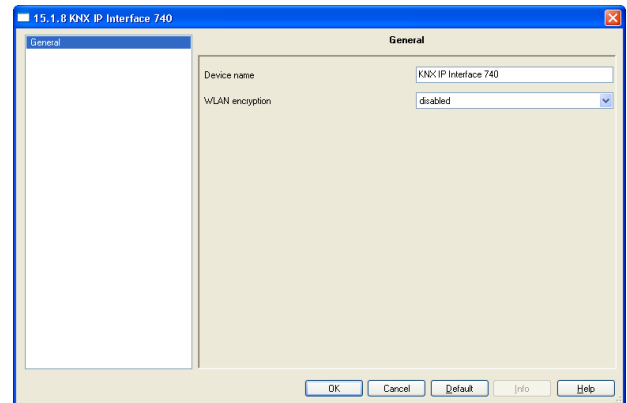


E

### ETS Database

The following parameters can be configured with ETS:

#### General:



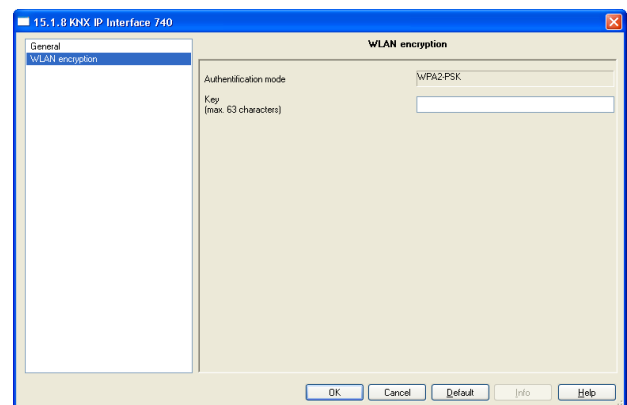
#### Device Name:

The KNX IP Interface 740 can be assigned a name of your choice. The device name should be descriptive. It is used to search for and recognize a device. For example, the device name appears in the dialog of the ETS Connection Manager. Additionally the device name is used for WLAN-network identification (SSID, Service Set Identifier).

#### WLAN-Encryption:

By default, the WLAN-Encryption is disabled. That is, the Installer can initially connect to the WLAN network without entering a password. The configuration attribute "enabled" activates the WLAN-connection encryption.

#### WLAN-Encryption:



#### Encryption standard:

WPA2-PSK (Wi-Fi Protected Access 2, pre-shared-key) is supported.

#### Encryption Key:

This is where you enter the encryption key (in ASCII characters, max. 63 Zeichen). It is also possible to enter the key during the initial connection setup phase from a PC.

#### Example:

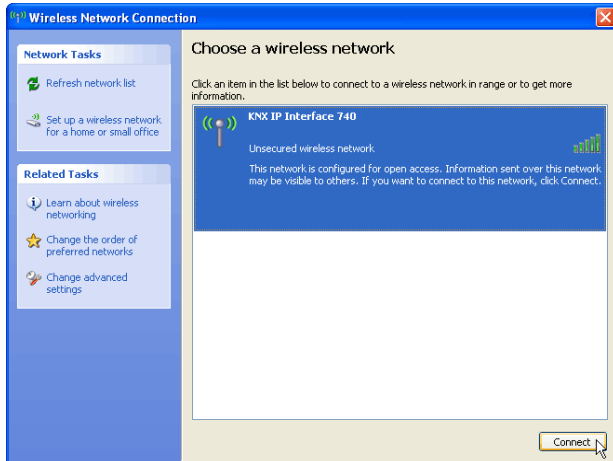
Herbert15985

VGWvdv36fhe468415v1weerhz3zf73b8JKB45SUsqmf

To ensure a high degree of security it is advised to use a longer key.

### WLAN Connection Initiation

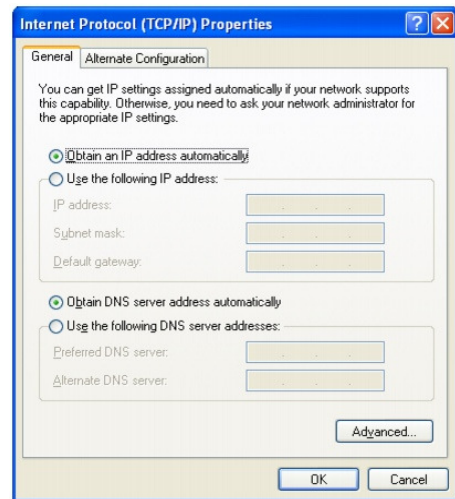
To create a WLAN connection from a PC or Laptop a WLAN adaptor is required. Most new computers have an integrated WLAN adaptor. To create a WLAN connection to the KNX IP Interface 740 *wireless* the device must first be found by the wireless connection manager. The dialog window „Wireless Network Connection“ from Windows® lists all available wireless networks. This can be found under „Control Panel / Network Connections / Wireless Network Connection“. It is also possible to open it from the corresponding „Wireless networks“ icon on the taskbar.



The KNX IP Interface 740 *wireless* contains an integrated DHCP-Server which will automatically assign the PC an IP Address. For most laptops this is the standard setting. To view/modify the wireless network connection configuration select „Internet Protocol (TCP/IP)“ and press the „Properties“ button.

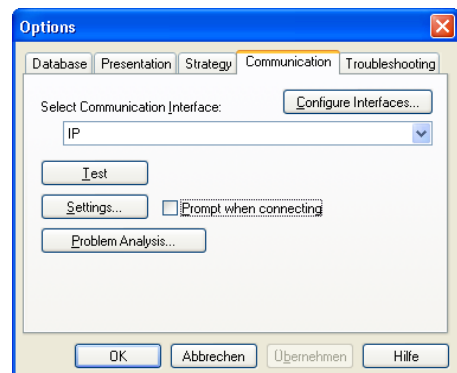


In the following window „Obtain an IP address automatically“ should be selected.



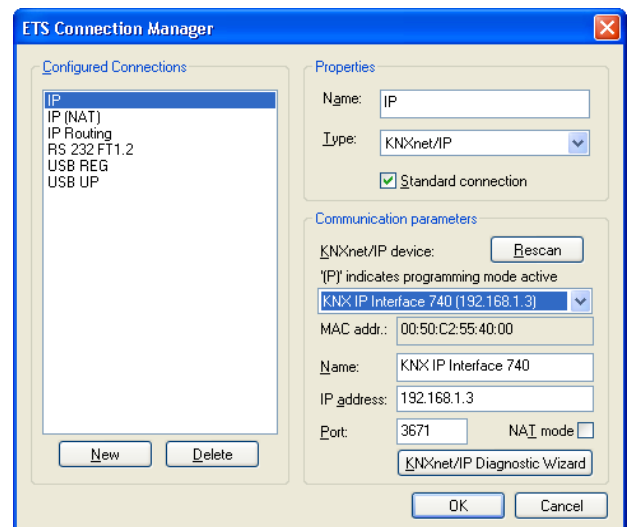
### ETS Connection Manager

Following the successful creation of a wireless connection the KNX IP Interface 740 *wireless* can now be used as an interface to the KNX/EIB bus. To use this connection in ETS (from Version 3.0c) select: Extras -> Options and the „Communication“ tab.



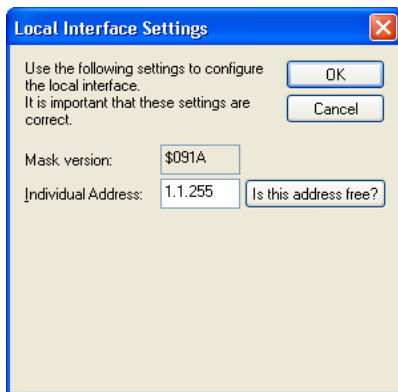
Open the ETS Connection Manager by clicking on the button: *Configure interfaces...*

Create a new connection and select KNXnet/IP as the connection type. ETS will automatically search for and display all KNXnet/IP devices. Select the required device.



To connect to the KNX/EIB bus the KNX IP Interface 740 *wireless* requires an additional physical address. This address is only used for the bus connection and is separately configured. To configure the second physical address select Extras ->

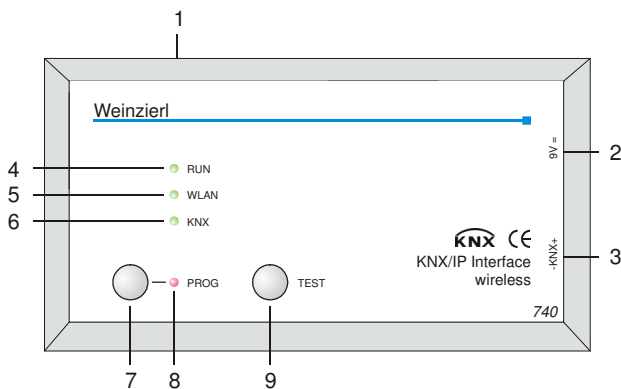
Options in ETS and select the Communication tab. Selecting *Settings...* will open the following window:



Enter a free physical address inside of the line. A dummy device can be added to the ETS project to reserve this address.

### Installation and connection

The housing of the KNX IP Interface 740 *wireless* has the following dimensions: 125 x 67 x 31 mm. It has the following connectors, display elements and buttons:



- 1: Antenna Terminal
- 2: External power supply connection (9V DC)
- 3: Connector for KNX/EIB with a bus terminal
- 4: RUN LED (green):
  - Blinks quickly during the startup phase (approx. 40 Seconds)
  - Lights up to indicate the device is operational
- 5: WLAN LED (green):
  - Flashes to indicate telegram activity
- 6: KNX LED (grün):
  - Lights up to indicate the KNX/EIB is available
  - Flashes to indicate telegram traffic
- 7: Programming Button
- 8: Programming Mode LED (red)
- 9: Test mode button:

While this button is depressed the device goes into Test mode. In Test mode the display elements have the following meaning:

  - RUN LED: blinks slowly and indicates the device is in Test mode
  - WLAN LED: off
  - KNX LED: on when an active connection is available, otherwise off.

The connection to the mains (230 V~ / 50 Hz) is done via the enclosed wall power supply.

The KNX IP Interface 740 wireless is delivered in a plastic case with the following content:

- Wall power supply (Primary: 230 V~ / 50 Hz, Secondary: 9 V=)
- Antenna (SMA-R connector)
- Plugable screwing terminal for the connection of the KNX/EIB bus
- Documentation



Weinzierl Engineering GmbH  
84558 Tyrlaching  
E-Mail: [info@weinzierl.de](mailto:info@weinzierl.de)  
Web: [www.weinzierl.de](http://www.weinzierl.de)

